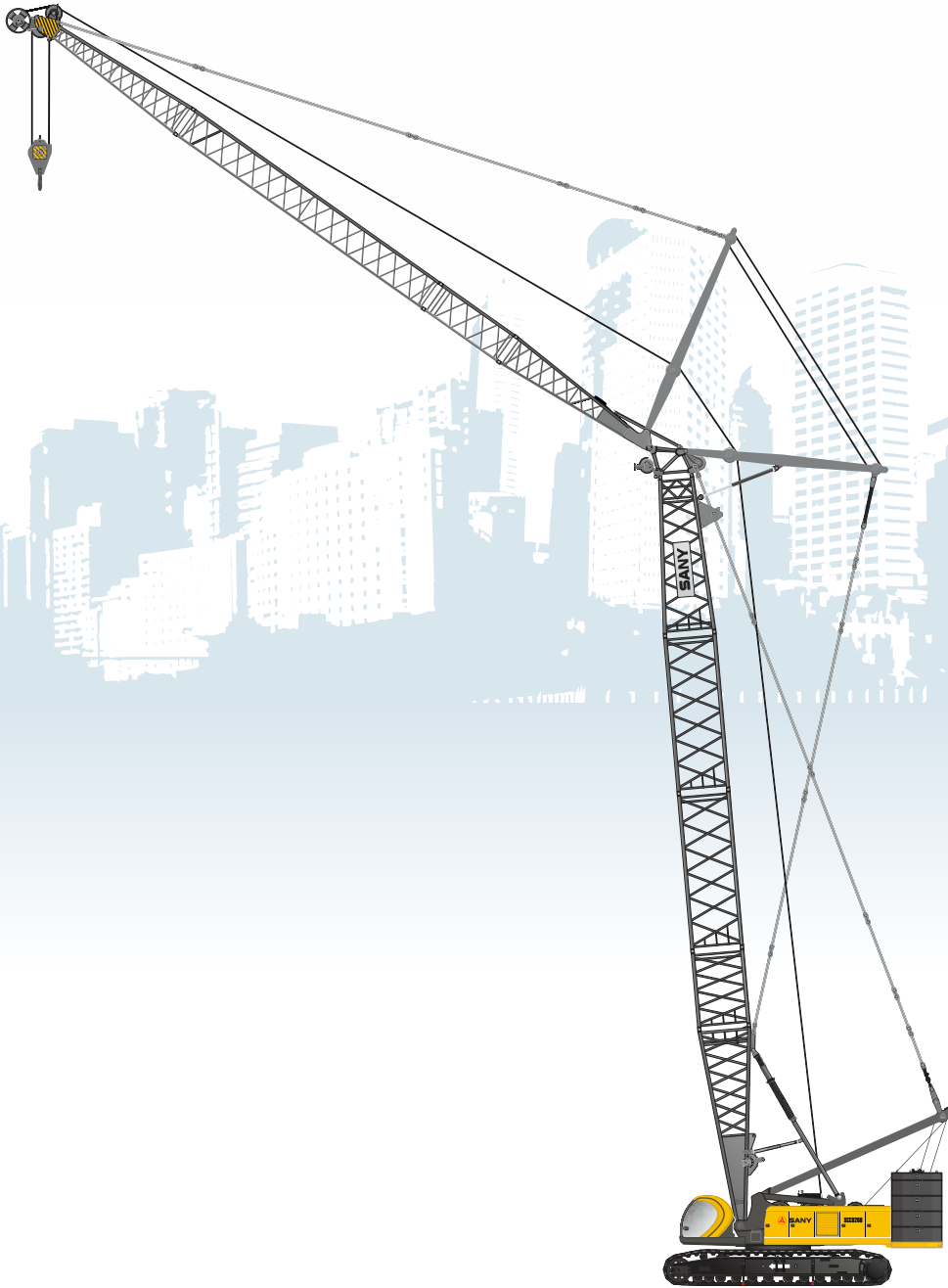




SANY

Quality Changes the World



SANY CRAWLER CRANE **SCC 8260**

CRAWLER CRANE

CONTENT

P3

SCC8200 Crawler Crane

- Outline dimensions
- Main Technical Features
- Main performance parameters
- Transport Dimensions
- Assembly/Disassembly diagram

P15

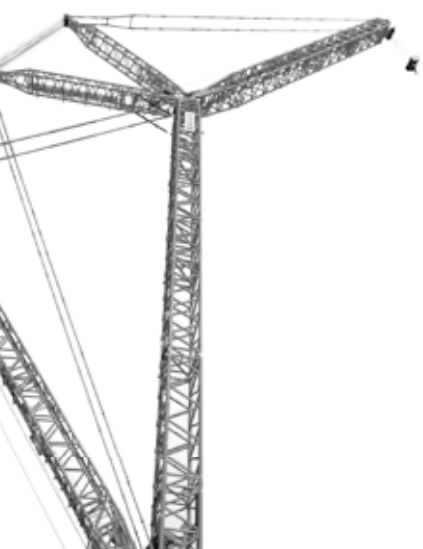
Specifications

- Uppworks
- Lowerworks
- Operation Devices
- Safety Devices

P23

Operating Condition Combination

- Operation conditions.
- H Operating Condition
- Hh Operating Condition
- LJ Operating Condition
- FJ Operating Condition

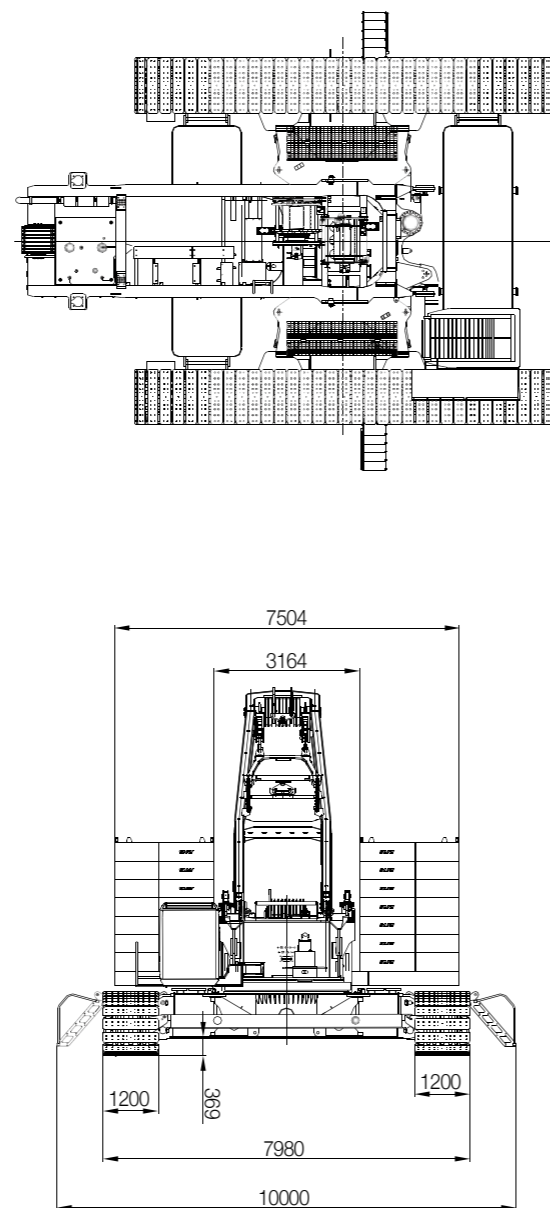
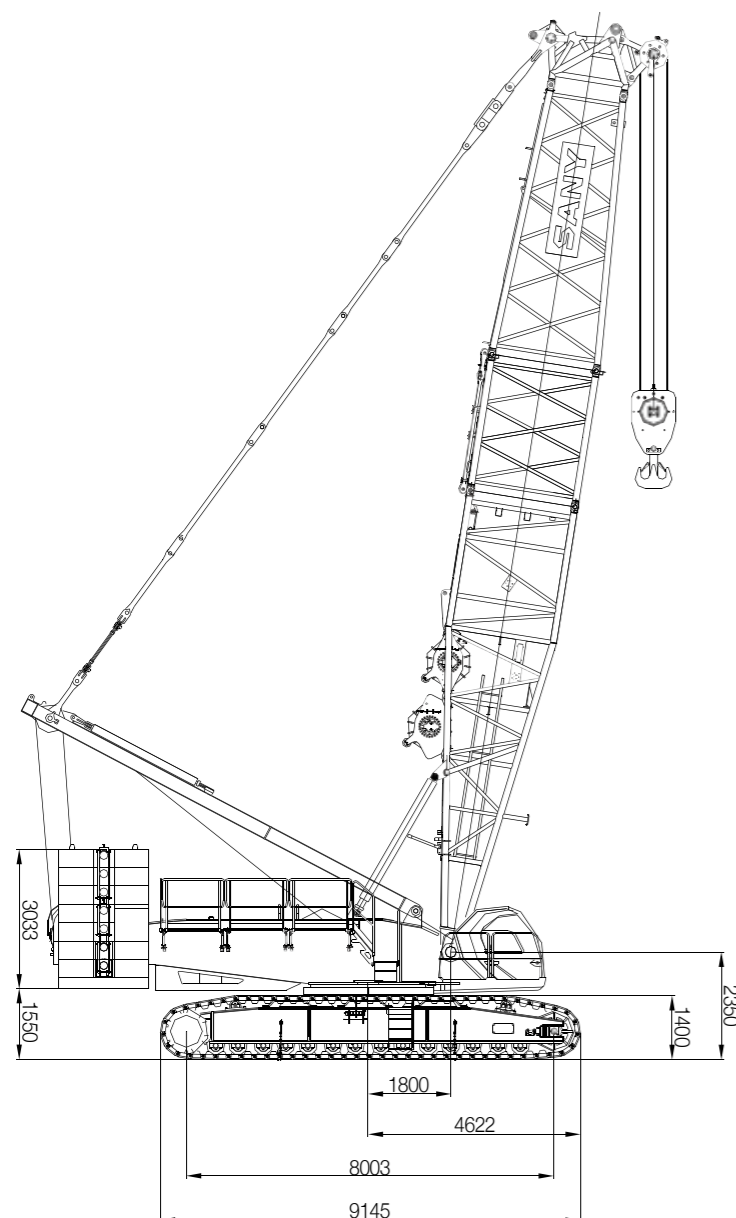


SCC8260

04	Outline Dimension
05	Main Technical Features
06	Main Performance Data
07	Transport Dimensions
12	Installation diagram



OUTLINE DIMENSIONS



MAIN TECHNICAL FEATURES

1. Highly Secured Control System:

There are two operation modes, working and assembly for your convenience. It features with electronic level gauge, bubble level gauge, real-time display, machine-leaving stop action, emergency electrical control, protection against lightning strike, automatically switching over traveling direction, and closed-circuit monitoring etc. functions, with a complete set of safety and monitoring devices applied;

2. Newly designed lifting condition:

20m boom + 12m heavy fixed jib are used, to lift the shield tunneling machine and similar products available for metro construction, and roll over the shield tunneling machine without crane; max. lifting capacity of the auxiliary hook is 96T. Load moment limiter can reflect the lifting capacities of the main and auxiliary hooks dynamically.

3. Artistic and comfortable cab:

Newly designed cab features with aesthetics, comfortableness, and safety;

4. Powerful assurance:

Commins engine complying with forth stage emission standard, with power of 336KW (QSX11.9-C450/336kw/Tier4i), is used, featuring with strong power and low-carbon environment.

5. Reliable Function Assurance:

All key parts adopt the internationally well-known brands; the safety margin in structural design is sufficient; the control system is fully capable to function stably in extreme weather, such as high-and-cold, high-temperature, and high plateau weather;

6. Convenient Maintenance Access:

It takes no more than 10min/person to adjust, no more than 30 min/person for daily maintenance and no more than 2h/person to repair the machine.

7. Powerful lifting capacity:

The maximum lifting capacity of boom is $183.8t \times 8m = 1470.4t \cdot m$, the longest boom is 86m; max. lifting capacity of luffing jib is $62.5t \times 18m = 1125t \cdot m$; the longest boom combination is 62 m+63m;

8. High-efficient self-assembly and disassembly technology:

Self-assembly cylinders are used at many places, to facilitate to dismantle the whole machine; quick-change wire rope head of the winch is used; traction winch equipping with clutch is used, to make the easy and convenient reeving.

9. Large Chassis Design:

Large chassis having track gauge of 6.7m ensures excellent machine performance and stability within 360° rotation.

10. Global transport standard:

Transport weight of the main machine is within 45t; transport width is less than 3m; transport height is less than 3.2m; therefore, the transport cost can be reduced.

11. Strong traveling capacity with load

Powerful traveling traction and stable traveling can be ensured by the excellent advantage of the crawler crane.

12. Reliable drive system:

International well-known hydraulic components and load feedback control technology having independent intellectual property rights are used, to ensure stable and reliable operation of the hydraulic system;

13. Super large fuel tank design:

Capacity of fuel tank is 1050L, which is greatly improved comparing with old model (400L), to avoid frequent refueling.

14. Wide application:

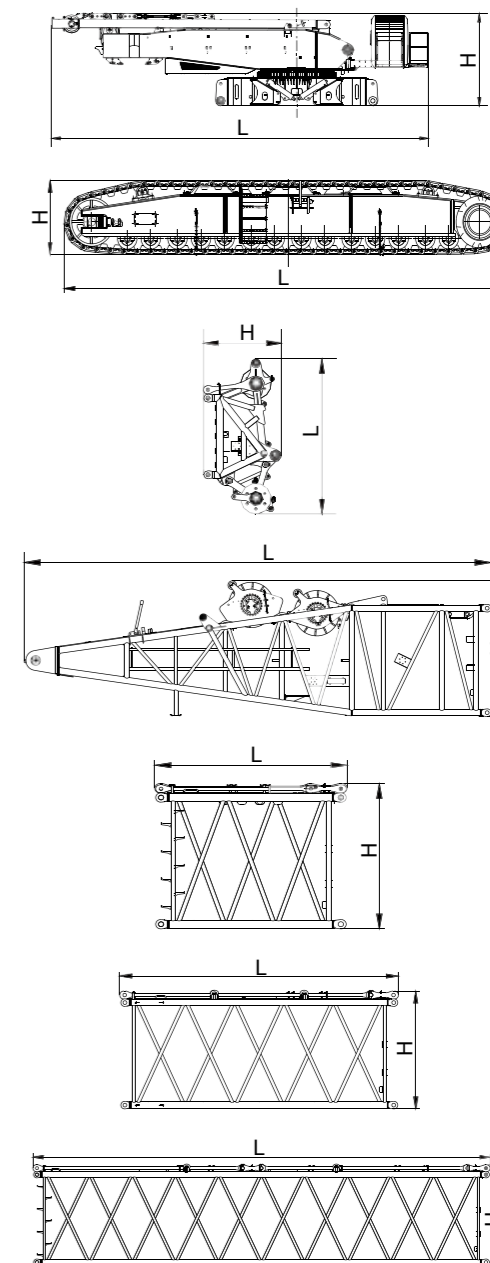
It can comply with Europe and America non-road forth-stage emission standard, which can be widely used in ships, metro, thermal power, municipal, and metallurgy etc. industries.

PERFORMANCE PARAMETERS

Main Performance Parameters of SCC8260 Crawler Crane			
Performance Index		Unit	Parameter
H Operating Condition	Max. Lifting Capacity	t	260
	Max. Rated Lifting Moment	t·m	1470.4
	Boom Length	m	20~92
	Boom Luffing Angle	°	30° ~85°
FJ Operating Condition	Longest Boom + Longest Fixed Jib	m	62+42
	Angle between Boom and Jib	°	10° , 30°
Heavy Fixed Jib Operating Condition	Boom + Fixed Jib (Shield Operating Condition)	m	20+12
	Angle between Boom and Jib	°	20
LF Operating Condition	Max. Lifting Moment	t·m	62.5×18=1125
	Longest Boom + Longest Luffing Jib	m	62+63
	Boom Luffing Angle	°	65° ~88°
Speed Parameters	Rope Speed of Main (Auxiliary) Winch (Outermost Working Layer)	m/min	0~125
	Rope Speed of Boom Luffing Winch (Outermost Working Layer)	m/min	0~100
	Rope Speed of Jib Luffing Winch (Outermost Working Layer)	m/min	0~100
	Slewing Speed	rpm	0~1.8
	Traveling Speed	km/h	0~1.2/0~0.5 (double-speed)
	Gradient Capability		30%
Engine	Output Power	kW	336
	Rated Speed	rpm	1800
Transportation Parameters	Max. Transportation Weight of Single Piece (including main and auxiliary hoisting winches)	t	45
	Transportation Dimension (L x W x H)	mm	13320×3000×3200
	Average Ground Pressure	MPa	0.14

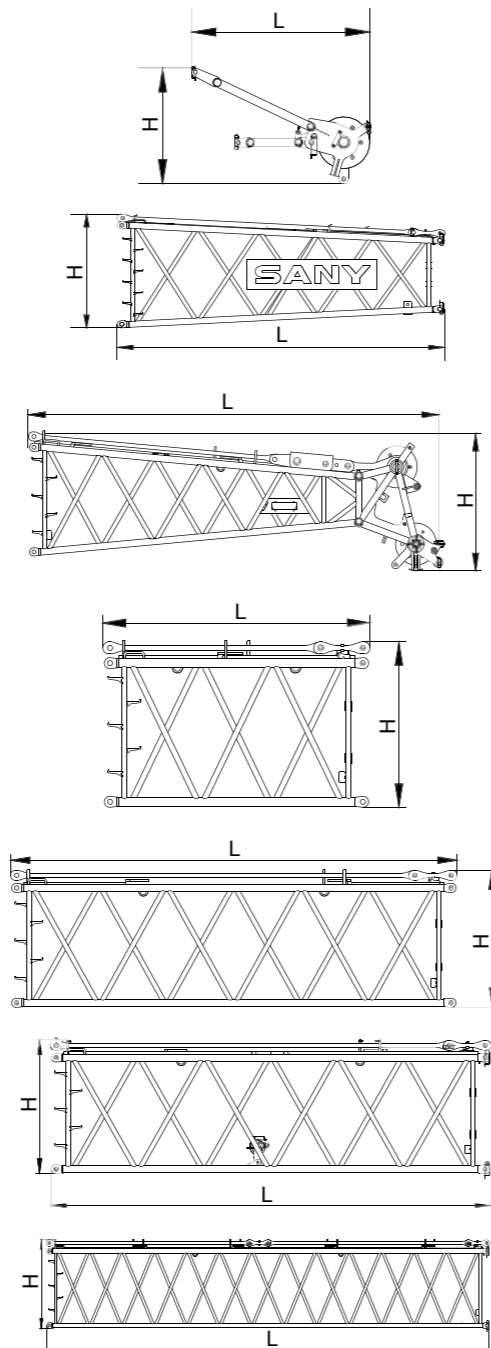
TRANSPORTATION DIMENSIONS

Body	×1
Length(L)	13.32m
Width(B)	3.0m
Height(H)	3.20m
Weight	45 t
Track assemblies	×2
Length(L)	9.15m
Width(B)	1.20m
Height(H)	1.40m
Weight	22 t
Boom head (including pulley blocks)	×1
Length(L)	3.24m
Width(B)	2.07m
Height(H)	1.62m
Weight	3.5 t
Boom base (including winch)	×1
Length(L)	10.35m
Width(B)	2.60m
Height(H)	2.99m
Weight	13.58t
3m Boom insert	×1
Length(L)	3.18m
Width(B)	2.65m
Height(H)	2.66m
Weight	1.3 t
6m Boom insert	×2
Length(L)	6.18m
Width(B)	2.65m
Height(H)	2.66m
Weight	2.0 t
12m Boom insert	×5
Length(L)	12.18m
Width(B)	2.65m
Height(H)	2.66m
Weight	3.6 t



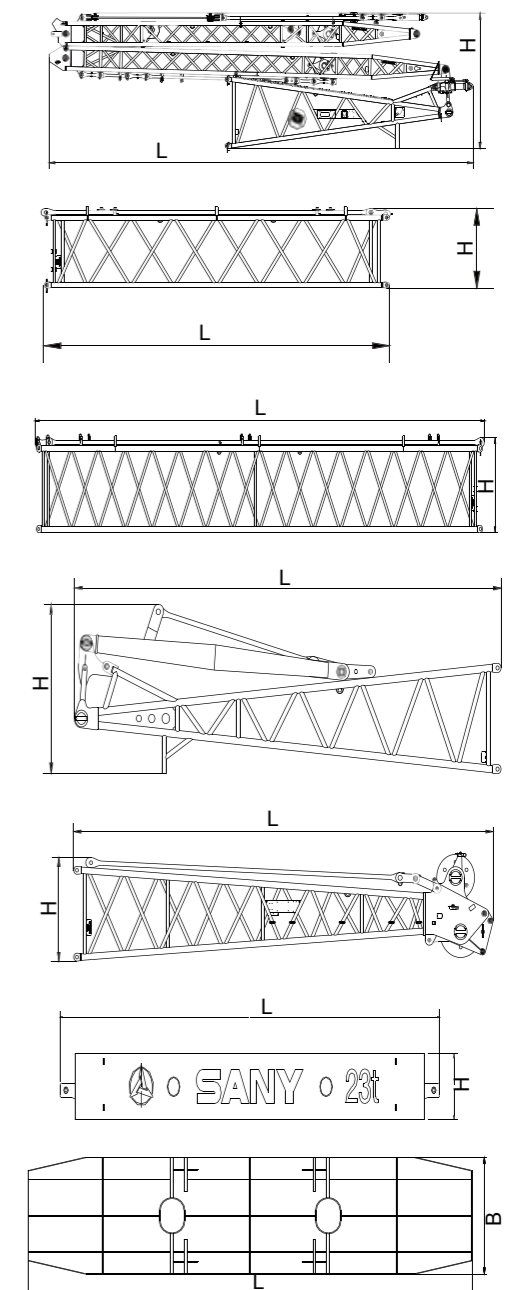
TRANSPORTATION DIMENSIONS

6m boom tapered insert	×1
Length(L)	6.20m
Width(B)	2.65m
Height(H)	2.66m
Weight	2.0 t
Luffing jib tip	1
Length(L)	6.46m
Width(B)	2.12m
Height(H)	2.10m
Weight	2.4 t
3m luffing jib insert	×1
Length(L)	3.17m
Width(B)	2.12m
Height(H)	1.91m
Weight	0.63 t
6m luffing jib insert	×1
Length(L)	6.17m
Width(B)	2.12m
Height(H)	1.91m
Weight	1.04 t
6m luffing jib insert I	×1
Length(L)	6.17m
Width(B)	2.12m
Height(H)	1.91m
Weight	1.05 t
12m luffing jib inserts	×3
Length(L)	12.17m
Width(B)	2.12m
Height(H)	1.91m
Weight	1.95 t
Boom extension	×1
Length(L)	2.2m
Width(B)	0.95m
Height(H)	1.44m
Weight	0.42 t



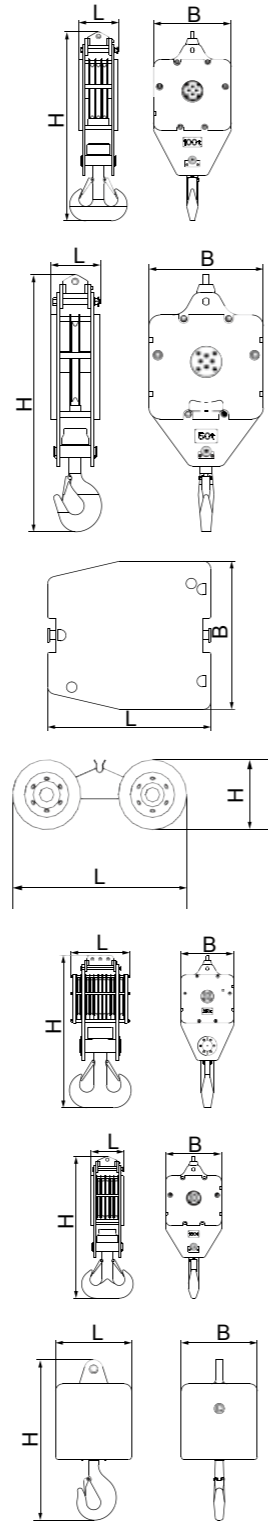
TRANSPORTATION DIMENSIONS

Jib base, and front and rear luffing masts	×1
Length(L)	11.49m
Width(B)	2.11m
Height(H)	3.26m
Weight	5.5 t
6m fixed jib insert	×1
Length(L)	6.11m
Width(B)	1.50m
Height(H)	1.42m
Weight	0.75 t
11.5m fixed jib insert	1
Length(L)	11.67m
Width(B)	1.50m
Height(H)	1.42m
Weight	1.3 t
Fixed jib base and mast	×1
Length(L)	6.70m
Width(B)	1.42m
Height(H)	2.00m
Weight	1.7 t
Fixed jib tip	×1
Length(L)	7.10m
Width(B)	1.42m
Height(H)	1.43m
Weight	1.75 t
Central counterweight	×2
Length(L)	5.48m
Width(B)	1.72m
Height(H)	0.60m
Weight	23 t
Rear counterweight tray	×1
Length(L)	7.50m
Width(B)	1.96m
Height(H)	0.70m
Weight	16 t



TRANSPORTATION DIMENSIONS

6t counterweight block	×14
Length(L)	2.17m
Width(B)	1.96m
Height(H)	0.51m
Weight	6 t
Dolly	×1
Length(L)	2.56m
Width(B)	1.74m
Height(H)	1.00m
Weight	1 t
260t hook	×1
Length(L)	1.04m
Width(B)	1.02m
Height(H)	2.93m
Weight	5.2 t
160t hook	×1
Length(L)	0.59m
Width(B)	1.02m
Height(H)	2.64m
Weight	3.2 t
100t hook	×1
Length(L)	0.51m
Width(B)	1.02m
Height(H)	2.48m
Weight	2.3 t
50t hook	×1
Length(L)	0.45m
Width(B)	1.02m
Height(H)	2.30m
Weight	1.7 t
16t hook	×1
Length(L)	0.53m
Width(B)	0.53m
Height(H)	1.10m
Weight	0.9 t

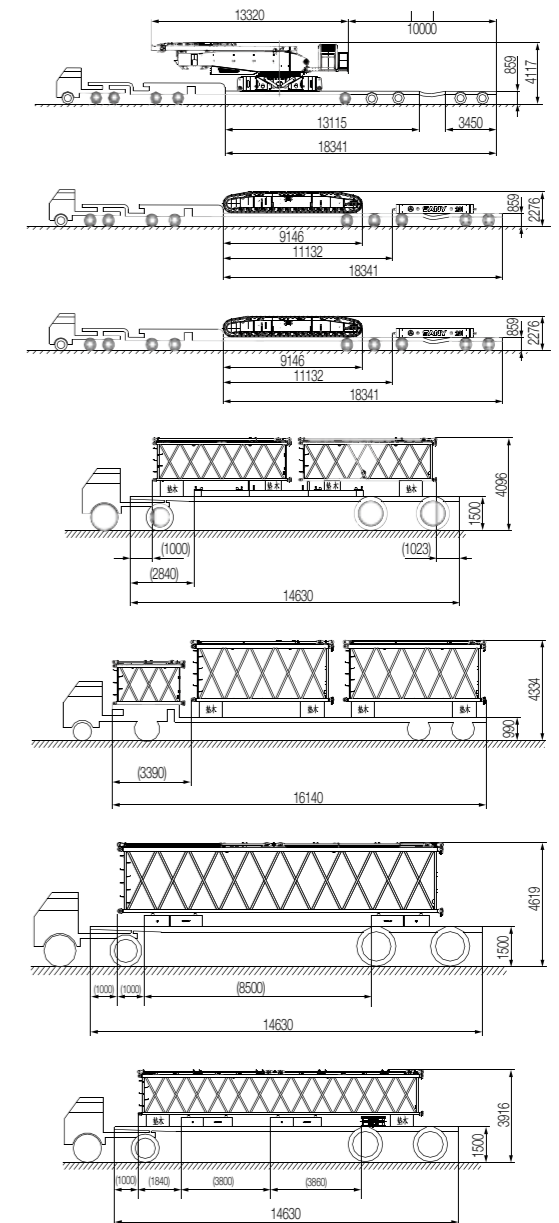


Notes:

1. The transportation dimensions are not drawn to proportion. The dimensions in the sketch are design value excluding packages.
2. The weight is design value and there may be tiny difference due to the.

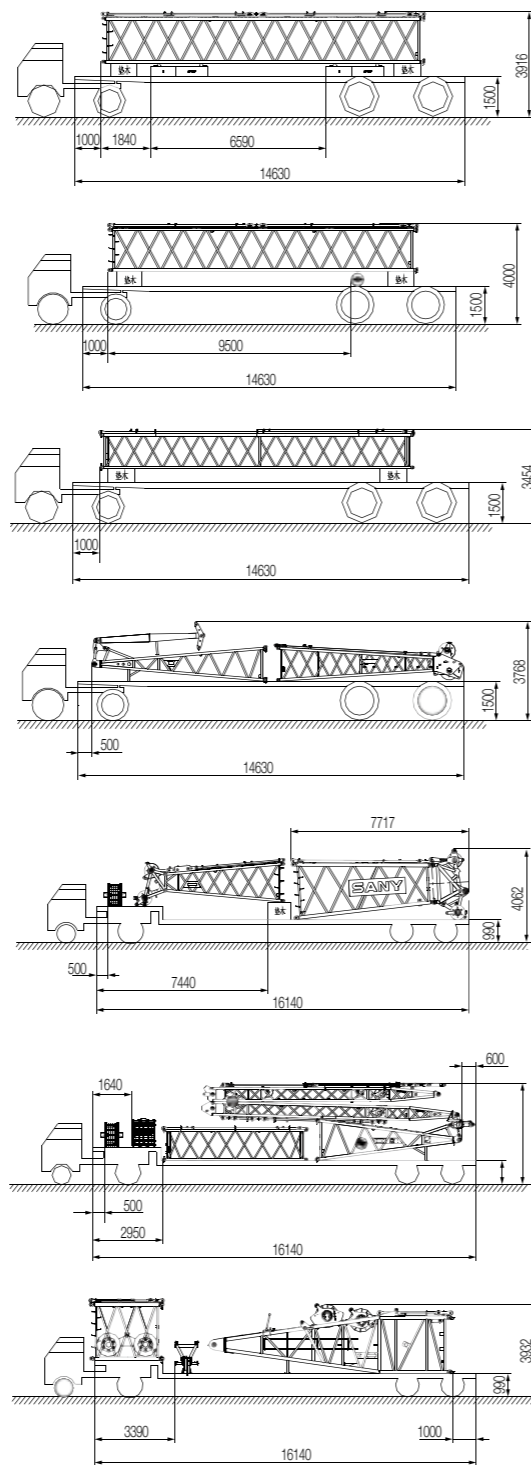
TRANSPORTATION PROGRAMS

Flat trailer	498-16165
Rated load	49.8t
Transport part	Main machine
Transport weight	45t
Qty.	1
Flat trailer	498-16165
Rated load	49.8t
Transport part	Left track frame assembly, and central counterweight
Transport weight	45t
Qty.	1
Flat trailer	20-14630
Rated load	20t
Transport part	Rear counterweight tray X 1, 6m luffing jib insert 1, and 6m luffing jib insert
Transport weight	17.7t
Qty.	1
Flat trailer	20-16140
Rated load	20t
Transport part	6m boom inserts ×2, and 3m luffing jib insert ×1
Transport weight	5t
Qty.	1
Flat trailer	20-16140
Rated load	20t
Transport part	Counterweight blocks ×2, 12m boom insert ×1
Transport weight	15.7t
Qty.	5
Flat trailer	20-14630
Rated load	20t
Transport part	Counterweight blocks ×2, 12m luffing jib insert ×1, 50T hook ×1
Transport weight	15.2t
Qty.	1



TRANSPORTATION PROGRAMS

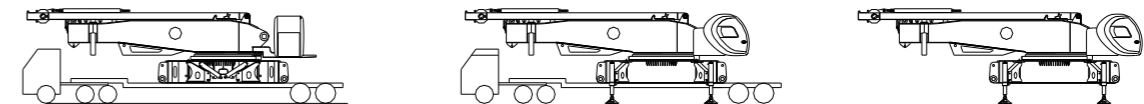
Flat trailer	20-14630
Rated load	20t
Transport part	Counterweight blocks ×2, 12m luffing jib insert ×1
Transport weight	13.5t
Qty.	1
Flat trailer	20-14630
Rated load	20t
Transport part	12m luffing jib insert ×1, 16T ball hook ×1
Transport weight	3t
Qty.	1
Flat trailer	20-14630
Rated load	20t
Transport part	11.5m Fixed jib, insert ×1
Transport weight	1.3t
Qty.	2
Flat trailer	20-14630
Rated load	20t
Transport part	Fixed jib base and mast ×1, fixed jib tip ×1
Transport weight	2.6t
Qty.	1
Flat trailer	20-14630
Rated load	20t
Transport part	160T hook ×1, boom tapered insert ×1, boom tip (with pulley block)×1, and luffing jib tip ×1
Transport weight	13t
Qty.:	1
Flat trailer	20-14630
Rated load	20t
Transport part	Luffing jib base and front and rear mast assembly ×1, 100T hook ×1, 260t hook ×1, and 6m fixed jib insert ×1;
Transport weight	13.5t
Qty.	1
Flat trailer	20-16140
Rated load	20t
Transport part	Boom base ×1, 3m boom insert ×1, boom extension ×1, dolly ×1
Transport weight	16.7t
Qty.	1



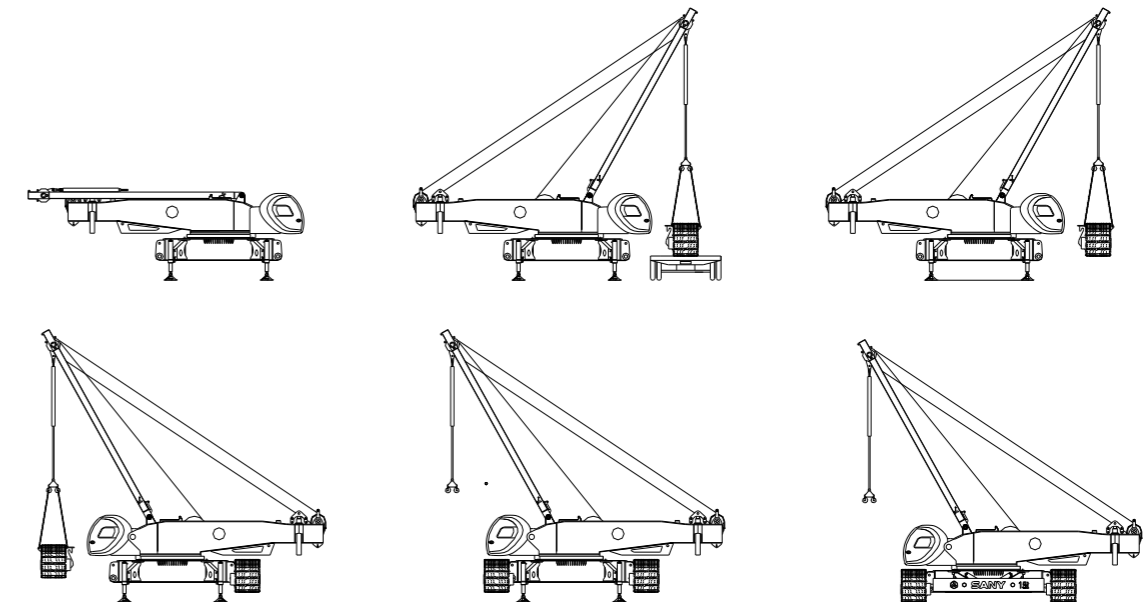
ASSEMBLY AND DISASSEMBLY DIAGRAM

Main Machine Self-Assembly and Disassembly Diagram

1) Main machine self-assembly and disassembly

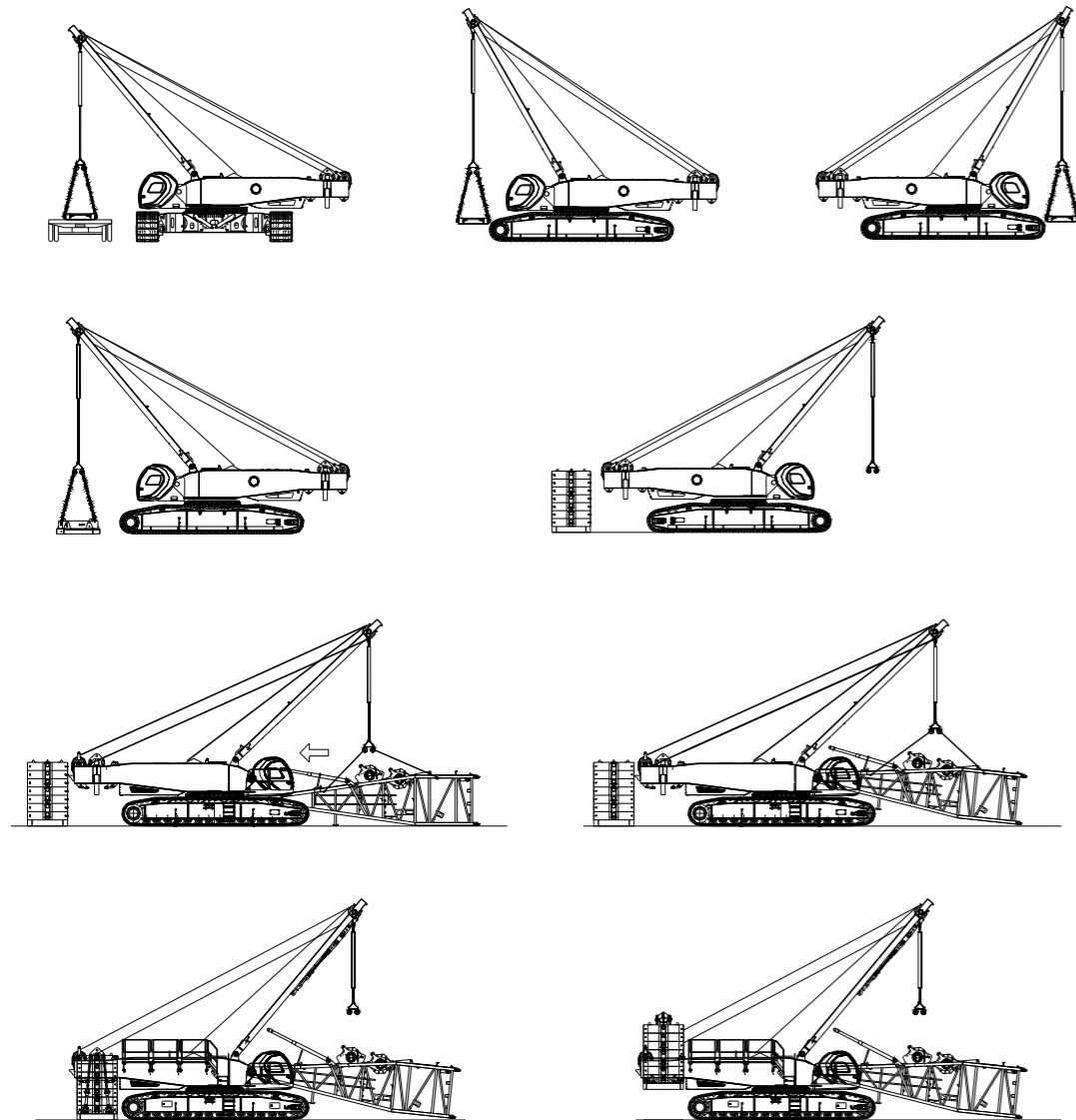


2) Track frame self-assembly and disassembly



ASSEMBLY AND DISASSEMBLY DIAGRAM

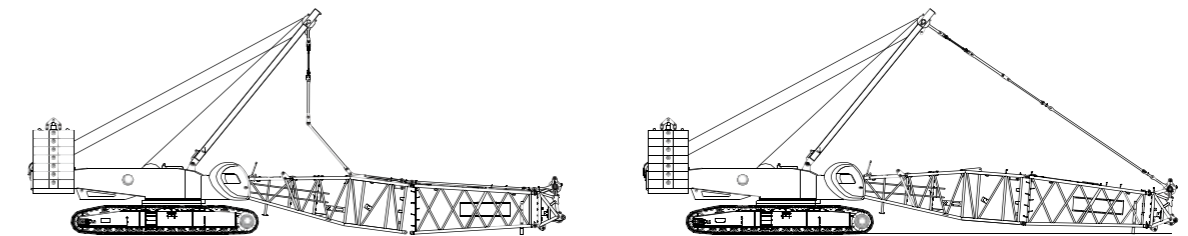
3) Counterweight and boom base self-assembly and disassembly



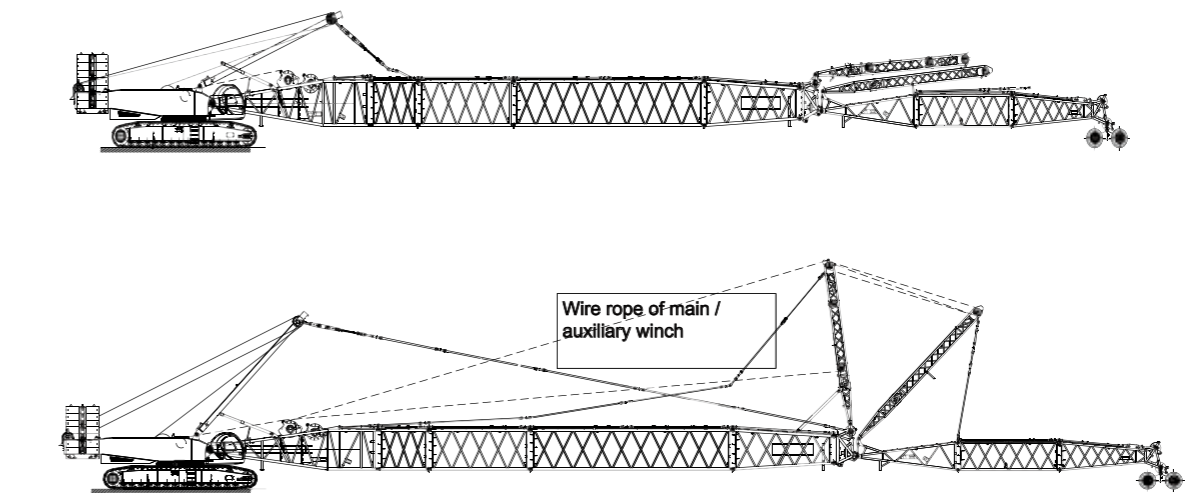
ASSEMBLY AND DISASSEMBLY DIAGRAM

Boom System Installation Diagram

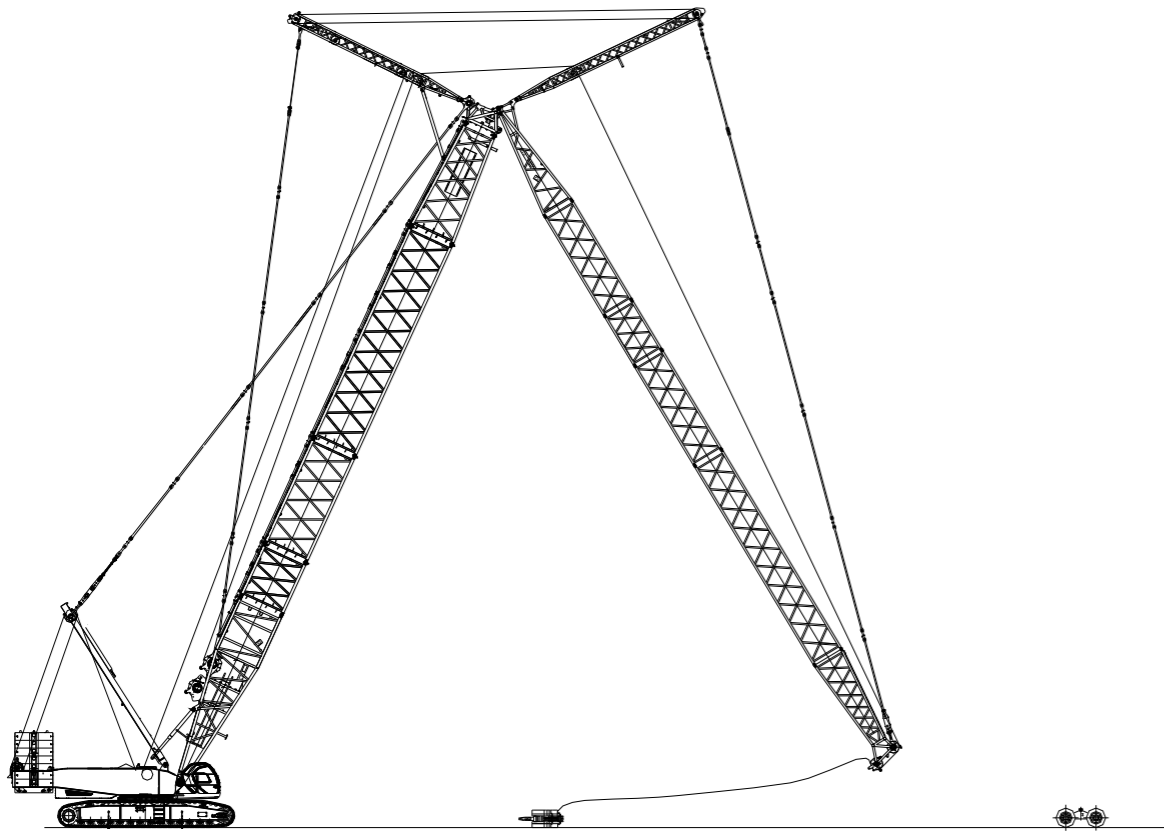
1) Installation of basic boom



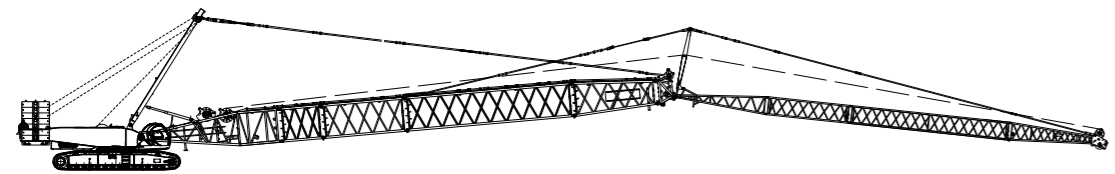
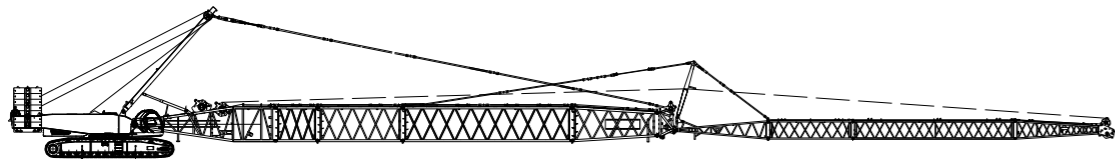
2) Installation of boom system under luffing jib operating condition



ASSEMBLY AND DISASSEMBLY DIAGRAM



3) Installation of boom system under fixed jib operating condition



SCC8260

- 16 Upperworks
- 18 Lowerworks
- 19 Operation equipments
- 20 Safety Devices



SPECIFICATION / SUPERSTRUCTURE

1) Engine

- Imported Commins SX11.9-C450/336kw /Tier4i / Cummins electronically controlled diesel engine is used, with rated power of 336kW and with rated speed of 1800rpm. Max. output torque is 2169Nm/1400rpm.
- Comply with Europe non-road fourth-stage emission standard.

2) Electrical Control System

- Advanced central control unit, load moment limiter, display, sensor, and closed-circuit monitoring system are used.
- Reliability: Main electrical components adopt international or industrial well-known brands, to ensure stable operation in high-cold, high-temperature, high plateau, and large wind severe environment.
- Safety: Electrical design can meet the CE standard requirement, with multi-stage safety limit control and all complete safety signal indicators applied.
- Comfortableness: All electrical parameters can be clearly shown on the combined instrument in the cab, to monitor all working parameters and working state in real time.
- Advancement: Electrical CAN bus system is used for the whole machine; and load power limit control, redundant communication validation, and optional global positioning are applied.

3) Hydraulic System

- Hydraulic system includes: Main valve hydraulic system, main hoisting structural hydraulic, boom luffing structural hydraulic, jib luffing structural hydraulic, and auxiliary hydraulic systems; main hydraulic components adopts Rexroth products.
- Features: Main system is of the open-circuit type, and widely uses the electrical proportional control components. The system is a load-sensitive LUDV system, to achieve the flow distribution unrated with load. Hydraulic proportional pilot control is used, featuring with flexible operation and good mobility.
- System pressure is 32MPa.

4) Main and Auxiliary Hoisting Mechanism

- Main and auxiliary winches are independently driven, which is characterized by compact structure, easy installation, and low wear, with maintenance-free built-in wet brake used to ensure the safety of the winch.
- Variable hydraulic motor of the hoisting mechanism can automatically adjust the displacement according to the load, to achieve max. winch speed.
- High-quality anti-rotation wire rope is used, featuring with high safety of the lifting and long life.
- Bag-type rope head is used to remove the wire rope easily and quickly.

Main and auxiliary hoisting mechanisms

Rope speed of the outermost working layer	0~125m/min
Wire rope diameter	28 mm
Length of wire rope of main winch	480m
Rated single line pull	17t

Auxiliary hoisting mechanisms

Rope speed of the outermost working layer	0~125 m/min
Wire rope diameter	28 mm
Length of wire rope of auxiliary winch	390m
Rated single line pull	17t

5) Luffing Mechanism

- Boom luffing drum is equipped with ratchet wheel and pawl locking device, to ensure the parking safety of the lifting boom under non-working state.

Boom luffing device

Rope speed of the outermost working layer	0~100m/min
Wire rope diameter	28mm
Length of wire rope of boom luffing	282m
Rated single line pull	17t

6) Jib luffing device

- Jib luffing drum is equipped with ratchet wheel and pawl locking device, to ensure the parking safety of the lifting boom under non-working state.

Jib luffing device

Rope speed of the outermost working layer	0~100m/min
Wire rope diameter	20mm
Length of wire rope of jib luffing	410m
Rated single line pull	8t

7) Swing Mechanism

- Three-row roller slewing ring is driven by large-displacement single motor reducer; slewing speed is 0-1.84r/min; with intermediate free slipping function, 360° rotation can be provided. When the handle is located at middle position and there is no slewing speed, brake will close and slewing is at locking state. Locking device is used, to prevent the slewing impact to the superstructure when traveling or transporting the load.

8) Counterweight

- Central counterweights: Two blocks, with total weight of 46t (23t×2) ;
- Rear counterweight: 14 pieces of 6t counterweight blocks and one 16t counterweight block are used, with total weight of 100t.

9) Cab

- Newly designed cable features with aesthetics, comfortableness, and safety; full-closed and wide-view SANY unique style cab having smooth shape is used, with tempered glasses applied at front and side and with GE structural plate applied at top, having good translucency, high strength, and high-wearing function; indoor noise is low (less than 85dB); air conditioner, control device, instrument, and closed-circuit monitoring system are mounted in the cab according to the ergonomics design. Cab can pitch up 25 degrees, thus expanding the operation view of the driver, and improving the safety of the operation. Its rotational feature can reduce the transport width.

10) Control Operation

- Track traveling can be controlled by handle or traveling pedal. There is a traveling automatically forward function, with operator facing direction as forward direction no matter how the superstructure rotates.
- Main winch, auxiliary winch, luffing and slewing can be controlled by switching over the control handle;
- All control buttons, control switches, and air conditioner control panel are distributed on the left and right armrest boxes, to achieve the different control functions.

11) Alarm display

- All alarm information, including wind speed, water temperature, oil temperature, oil level, working time, and engine speed, can be shown on the display in the cab in case of failure, with sound and light alarm issued simultaneously.

UNDERCARRIAGE

1) Travelling Drive

Each track part has its own independent traveling drive device. The hydraulic traveling motor drives the planet gear speed reducer to achieve the independent traveling through the drive wheel.

2) Travelling Brake

Traveling brake is a normally closed brake built in the reducer, with auto compensation applied without adjustment. When the pedal valve is pressed, brake will be released to travel.

3) Crawler Shoes

Crawler shoes are made of high-strength and high-wearing material, with its tension adjusted by hydraulic jack after mounted on the machine and with ideal tension applied though adjusting the shims.

OPERATION DEVICES

1) Boom

- Main chord is made of high strength material; boom frame is of space lattice structure with intermediate constant-section and both-end variable-section applied.
- Standard sections: 10m boom base, 6m transition section, 1m boom tip, 3m×1 boom insert, 6m×1 boom insert, and 12m×1 boom insert.
- Boom length can vary between basic boom length (20m) and longest length (92m), with 3m increment applied.
- 2.0m boom extension can be either installed on the boom tip or installed on the luffing jib tip.

2) Fixed Jib

- Main chord is made of high strength material; jib frame is of space lattice structure with intermediate constant-section and both-end variable-section applied.
- 6.5m jib tip, 6.5m jib base, and 6m×1 and 11.5m×2 jib inserts are used; available fixed jib lengths include 13m, 19m, 24.5m, 30.5m, 36m, and 42m.
- They can be installed on the 29m~62m boom.

3) Luffing jib

- Main chord is made of high strength material; luffing jib frame is of space lattice structure with intermediate constant-section and both-end variable-section applied.
- 6m luffing jib tip, 6m jib base, and 3m×1 and 12m×2 jib inserts are used; available luffing jib lengths include 21m, 24m, 27m, 30m, 33m, 36m, 39m, 42m, 45m, 48m, 51m, 54m, 57m, 60m, and 63m. They can be installed on the 26m~62m boom.

4) Hook

- 16t hook
- 50t hook
- 100t hook
- 160t hook
- 260t hook

SAFETY DEVICES

1) Load Moment Indicator

- SCC8260 load moment limiter is a designed safety protective system for SANY SCC series boom-type crawler crane, with performance structural parameters of all series SANY crawler cranes, such as load bearing curve, load weight, center of gravity, and other geometrical parameters, directly stored inside. Moment calculation adopts the targeted optimization model that combines the technical accumulation in crawler crane filed, having the customized advantage, which can maximize the utilization efficiency of the crane while ensuring the lifting safety, to avoid the technology disconnection and difficult after-sale service due to the separation between the crane and load moment limiter manufactures, thus improving the overall quality of the crane.
- As an independent safety control system fully controlled by computer, the load moment indicator can detect and show rated and actual load, working radius and boom angle. Under normal operation condition, it can automatically cut the crane action to dangerous direction, and record the over-load information.
- Composition: display, controller, angle sensing, load sensor.

2) Three-color Load Alarm Light

- The corresponding load moment limiter display can show the state of the load progress bar and reflect the safety status of the load.

3) Main and Auxiliary Hooks Hoisting Limiter

- When the lifting hook is raised to a certain height, the alarm will be issued and the lifting operation of hook block will be automatically cut off.

4) Lowering Limiter of Main and Auxiliary Hooks

- When the wire rope releases to last three wraps, alarm will be given and the electrical control system can automatically cut off the lowering action.

5) Assemble/Operation Mode Change Switch

- In assembly mode, over hoisting limiter, boom angle limiter and load moment indicator will be bypassed for the assembly of the crane.
- In operation mode, all safety limit devices will function.

6) Boom limit detection device

- Under different operating condition, limit switch and boom angle signal in the load moment limiter system can be applied, to ensure the crane boom or jib within the safety angle range.

7) Boom Back-stop Device

- Boom adopts the cylinder back-stop structure, with larger back-stop force applied if the compression amount is larger.
- There are a pair of mechanical back-stop device on the rear mast of luffing jib, to prevent the mast from titling backwards and tension the pull plate of the rear mast.
- When the jib reaches the position that the angle between jib and boom is too small, the cylinder back-stop device can work to prevent it from tilting backwards.

8) Winch mechanism brake

- All winch brakes adopt the spring-loaded normally-closed disc brakes, featuring with large brake, free-maintenance, safe and reliable operation, and long life.

9) Closed-circuit monitoring system

- High-definition camera is used, so the operator in the cab can monitor the real-time status of the luffing winch, lifting winch drum, and rear of crane on the monitor.

10) Fault self-diagnosis system

- Fault alarm information can be generated automatically, to view the charged status of the electrical line, to help to quickly eliminate the electrical fault.

11) Pharos

- It is installed at top of boom, to give high altitude promote, thus avoiding boom lowering throughout the night.

12) Anemometer

- It is on the top of boom to monitor the wind speed in real time and to transfer data to the display in cab.

13) Level gauge

- Bubble level gauge is as validation reference and electronic level gauge is as a real-time high-precision display, to show the tilting angle and the safe working ground environment of the crane.

14) Unhook preventive device

- Each type lifting hook is equipped with the battle to prevent the wire rope from falling off.

15) Operation alarm

- Before any operation of the crane, press horn to prompt to other persons about information that the crane starts to run.

16) Traveling or slewing prompt

- In traveling or slewing operation, working indicator is flashing and buzzer works.

17) Function Lock

- When the operator leaves the seat or function locking handle is not at proper position, all other function control handles will not work, to effectively avoid some mis-operation.

18) Automatically reversing driving

- No matter what the relative positions of the upperworks and undercarriage are located, if the pedal is pushed forwards, the machine will travel forwards, and if pushed backwards, the machine will travel backwards.

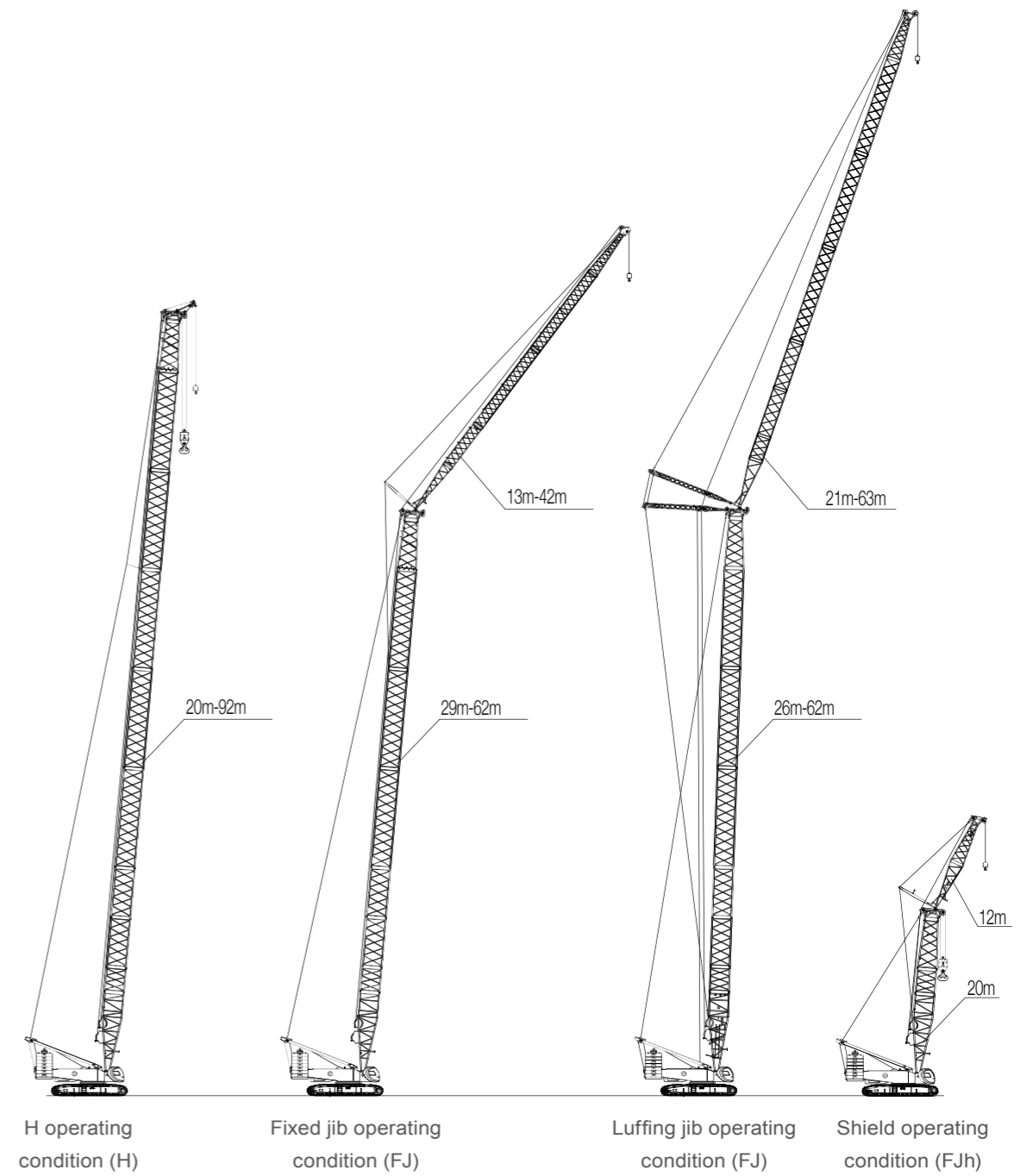
19) Monitor display

- High-precision true color display is used, with overall electrical man-machine interaction display terminal applied, to show the working status and real-time parameters of the engine system, hydraulic system, and electrical system.

SCC8260

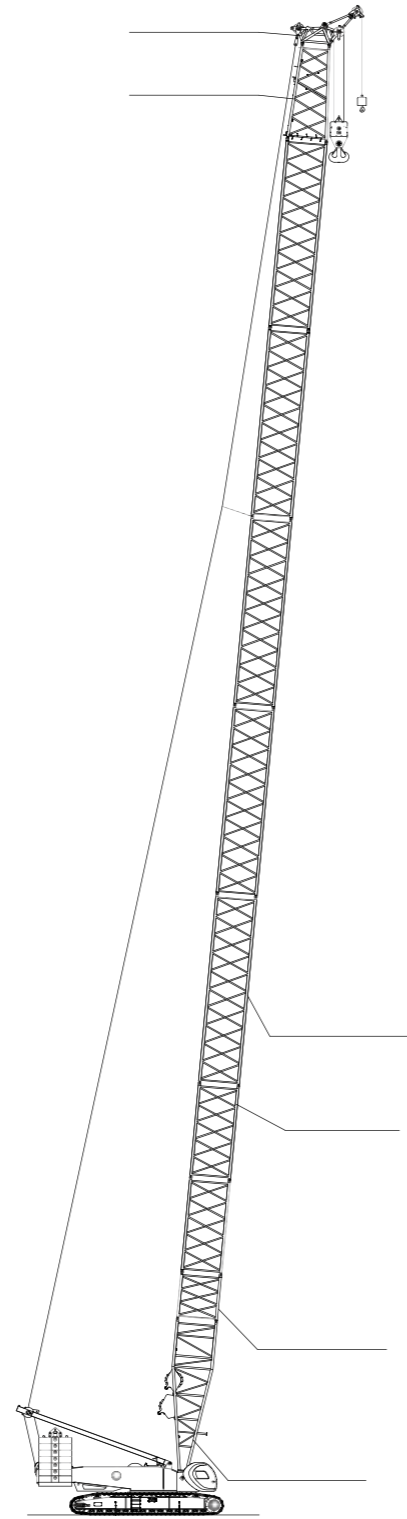
OPERATING CONDITION COMBINATION

Operating Condition Combination	24
Boom H operating conditions	26
Combined boom Hh operating conditions	31
Luffing jib LJ operating conditions	35
Fixed jib FJ operating condition	48

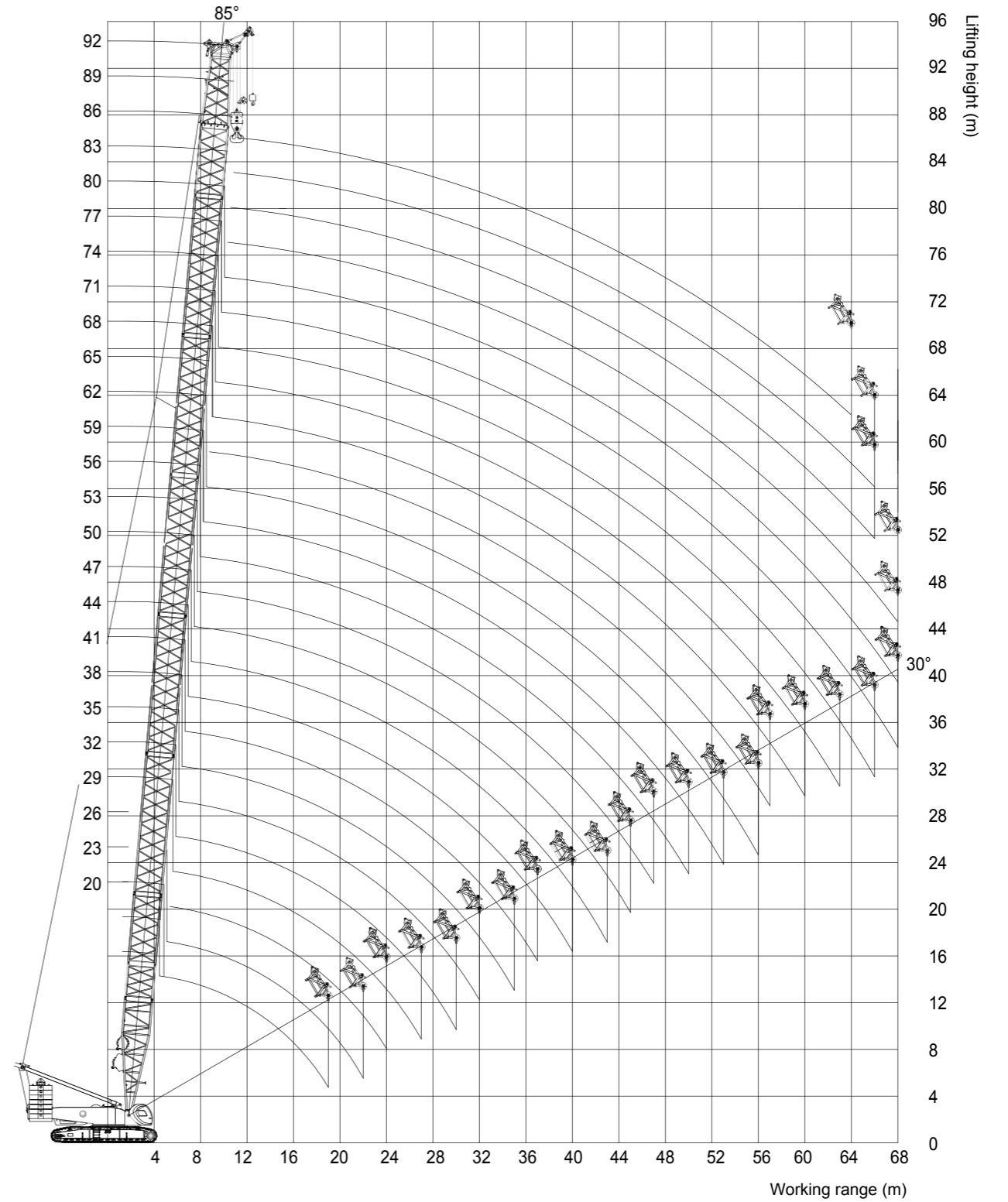


H OPERATING CONDITION

Boom length (m)	Boom combination Boom insert		
	3 m	6 m	12m
20	1	-	-
23	-	1	-
26	1	1	-
29	-	-	1
32	1	-	1
35	-	1	1
38	1	1	1
41	-	-	2
44	1	-	2
47	-	1	2
50	1	1	2
53	-	-	3
56	1	-	3
59	-	1	3
62	1	1	3
65	-	-	4
68	1	-	4
71	-	1	4
74	1	1	4
77	-	-	5
80	1	-	5
83	-	1	5
86	1	1	5
89	-	2	5
92	1	2	5



OPERATING RANGE DIAGRAM OF H OPERATING CONDITION



BOOM LOAD CHART

SCC8260 Crawler Crane H Operating Condition 100+46

Radius(m)	Boom length 20-29m Rear counterweight 100t Central counterweight 46t													
	20	23	26	29	32	35	38	41	44	47	50	53		
5	260.0													
6	238.4	224.9	223.6	204.2	194.0									
7	207.9	207.6	202.2	191.4	174.4	169.1	165.0	158.0						
8	183.8	178.3	174.4	170.6	166.3	157.9	156.5	141.8	126.3	125.0	124.0	122.0		
9	156.1	153.4	149.4	145.4	142.7	142.7	141.3	130.2	122.1	117.6	115.0	113.0		
10	141.2	137.8	135.7	132.2	130.1	129.2	128.0	125.8	115.5	115.5	107.1	104.9		
12	110.1	108.2	107.7	107.4	107.1	107.7	105.5	102.4	102.4	100.0	97.8	95.8		
14	89.6	88.8	88.1	87.7	87.2	87.2	86.9	86.8	85.8	84.2	82.4	80.9		
16	74.6	74.2	73.8	73.5	72.8	72.6	73.8	72.3	72.3	72.3	70.8	69.5		
18	63.8	63.3	62.8	62.5	62.5	62.6	62.0	62.3	61.6	61.5	61.7	60.7		
20	60.7	55.1	54.7	54.4	54.3	54.6	54.5	54.3	54.2	54.1	53.8	53.5		
22		49.5	48.8	48.3	48.2	48.2	48.1	48.0	47.8	47.7	47.5	47.6		
24			43.8	43.5	43.1	43.0	42.8	42.7	42.6	42.5	42.3	42.7		
26				39.1	39.0	39.1	38.9	38.9	38.0	38.3	38.2	38.1		
28				37.0	35.0	35.1	34.9	34.8	34.5	34.5	34.2	34.0		
30					31.4	31.6	31.4	31.3	31.1	31.0	30.7	30.5		
32						28.6	28.4	28.3	28.1	28.0	27.7	27.5		
34							25.8	25.7	25.5	25.4	25.1	24.9		
36								24.6	23.4	23.4	23.1	22.8	22.7	
38									22.3	21.7	22.0	20.8	20.6	
40										20.0	20.2	19.5	19.2	
42											17.8	17.7	17.6	
44												16.9	16.8	16.5
46													16.5	15.2

Notes:

1. The actual hoisting capacity is value that the rated value in the table minus the weight of all lifting tools (including hooks, slings, and wire ropes winding on the hooks and boom tip).
2. The rated load in the table is the value under the condition that the non-traveling heavy load is lifted slowly and steadily from the solid and flat ground.

BOOM LOAD CHART

SCC8260 Crawler Crane H Operating Condition 100+46

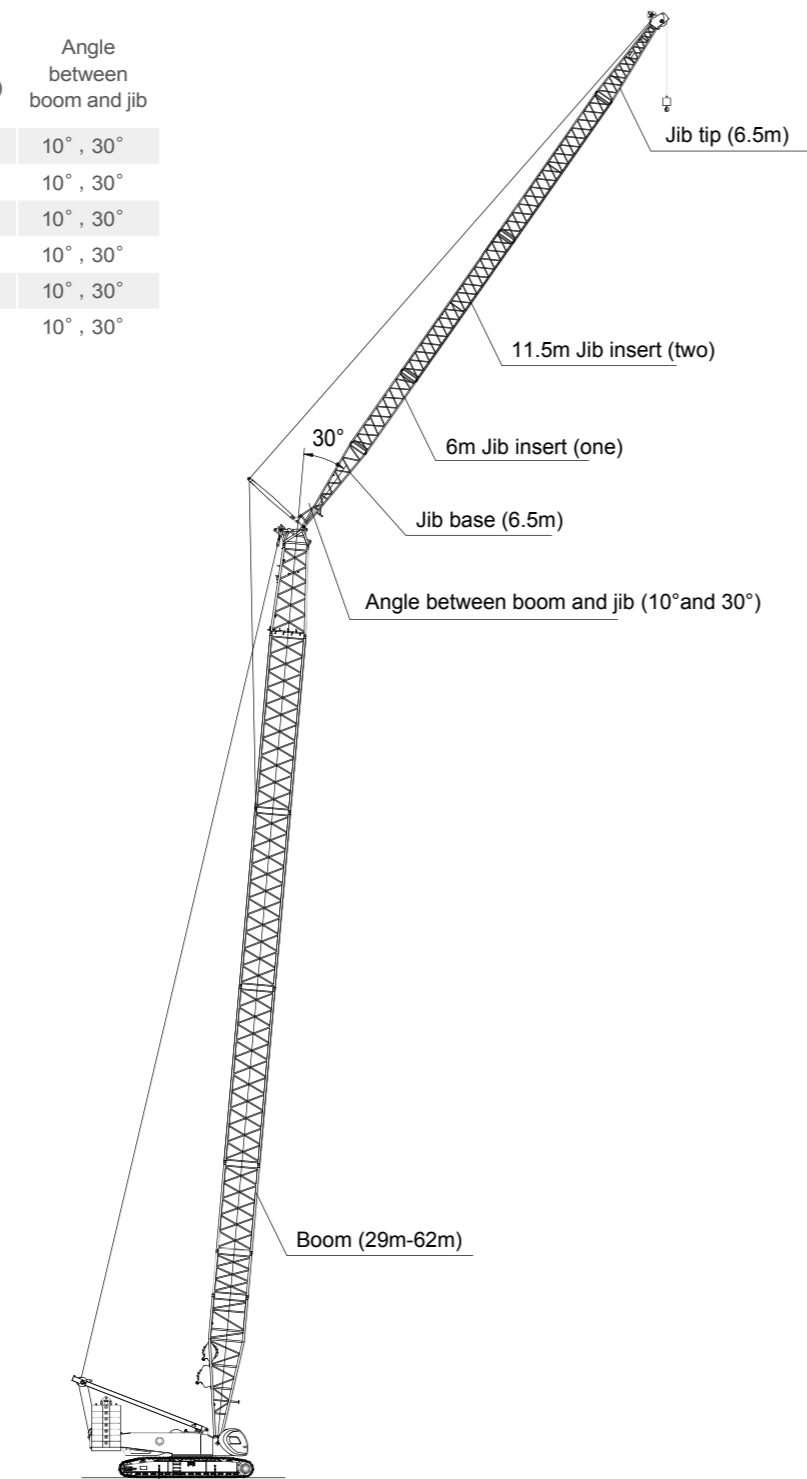
Radius(m)	Boom length 20-29m Rear counterweight 100t Central counterweight 46t														
	56	59	62	65	68	71	74	77	80	83	86	89	92		
5															
6															
7															
8															
9	114.0	114.0	98.9	98.9											
10	92.0	90.0	90.0	90.0	89.0	83.3	83.3	83.3							
12	91.0	87.2	85.6	76.3	72.8	67.0	63.7	60.4	60.0	59.0	59.0	58.0	55.0		
14	79.1	77.7	74.9	73.1	71.8	65.1	60.3	54.9	51.8	51.2	50.0	50.0	46.0		
16	68.1	67.0	65.6	64.4	63.0	62.0	54.8	52.1	48.2	47.5	46.0	42.0	40.0		
18	59.4	58.5	57.3	56.2	55.1	54.2	53.0	47.4	45.5	44.9	39.0	35.5	32.4		
20	52.4	51.6	50.5	49.6	48.6	47.8	46.8	45.9	42.9	39.4	35.9	31.1	28.8		
22	46.6	45.9	44.9	44.1	43.2	42.5	41.5	40.8	39.8	36.6	32.1	27.1	25.1		
24	41.8	41.1	40.2	39.5	38.6	38.0	37.1	36.4	35.6	35.0	31.1	26.3	23.9		
26	37.6	37.1	36.2	35.6	34.7	34.2	33.4	32.7	31.9	31.4	28.7	25.3	22.7		
28	33.7	33.6	32.8	32.1	31.4	30.9	30.1	29.5	28.7	28.2	27.4	24.2	21.8		
30	30.2	30.1	29.8	29.2	28.4	28.0	27.2	26.6	25.9	25.4	24.7	23.1	21.1		
32	27.2	27.1	26.8	26.5	25.8	25.4	24.7	24.1	23.4	23.0	22.3	21.7	20.1		
34	24.6	24.5	24.2	24.0	23.5	23.1	22.4	21.9	21.2	20.8	20.1	19.6	18.9		
36	22.3	22.2	21.9	21.7	21.3	21.1	20.4	19.9	19.2	18.8	18.2	17.7	17.0		
38	20.3	20.2	19.8	19.6	19.3	19.1	18.6	18.1	17.4	17.1	16.4	15.9	15.3		
40	19.0	18.4	18.2	17.8	17.4	17.3	16.9	16.5	15.8	15.5	14.8	14.4	13.7		
42	17.5	17.1	16.9	16.3	16.0	15.7	15.3	15.0	14.3	14.0	13.4	12.9	12.3		
44	16.2	15.9	15.5	14.9	14.7	14.5	13.8	13.6	13.0	12.7	12.1	11.6	11.0		
46	15.0	14.5	14.0	13.7	13.4	13.2	12.5	12.3	11.8	11.5	10.8	10.4	9.8		
48	13.4	13.5	13.1	12.6	12.5	12.3	11.3	11.1	10.6	10.3	9.7	9.3	8.7		
50	12.5	12.5	12.0	11.7	11.5	11.2	10.2	9.9	9.6	9.3	8.7	8.3	7.7		
52		11.5	11.0	10.5	10.3	10.0	9.2	8.9	8.5	8.3	7.7	7.3	6.7		
54			10.2	10.0	9.5	8.6	8.2	8.0	7.6	7.4	6.8	6.4	5.8		
56				9.0	8.8	8.7	7.3	7.1	6.7	6.6	6.0	5.6	5.0		
58					7.9	7.8	6.5	6.3	5.9	5.8	5.2	4.8	4.2		
60						7.0	7.0	5.8	5.5	5.1	5.0	4.5	4.1	3.5	
62							6.0	5.0	4.8	4.4	4.3	3.8	3.4	2.8	
64								5.4	4.4	4.1	3.8	3.6	3.1	2.7	2.2
66									3.7	3.5	3.1	3.0	2.5	2.1	
68										2.9	2.5	2.4			

Notes:

1. The actual hoisting capacity is value that the rated value in the table minus the weight of all lifting tools (including hooks, slings, and wire ropes winding on the hooks and boom tip).
2. The rated load in the table is the value under the condition that the non-traveling heavy load is lifted slowly and steadily from the solid and flat ground.

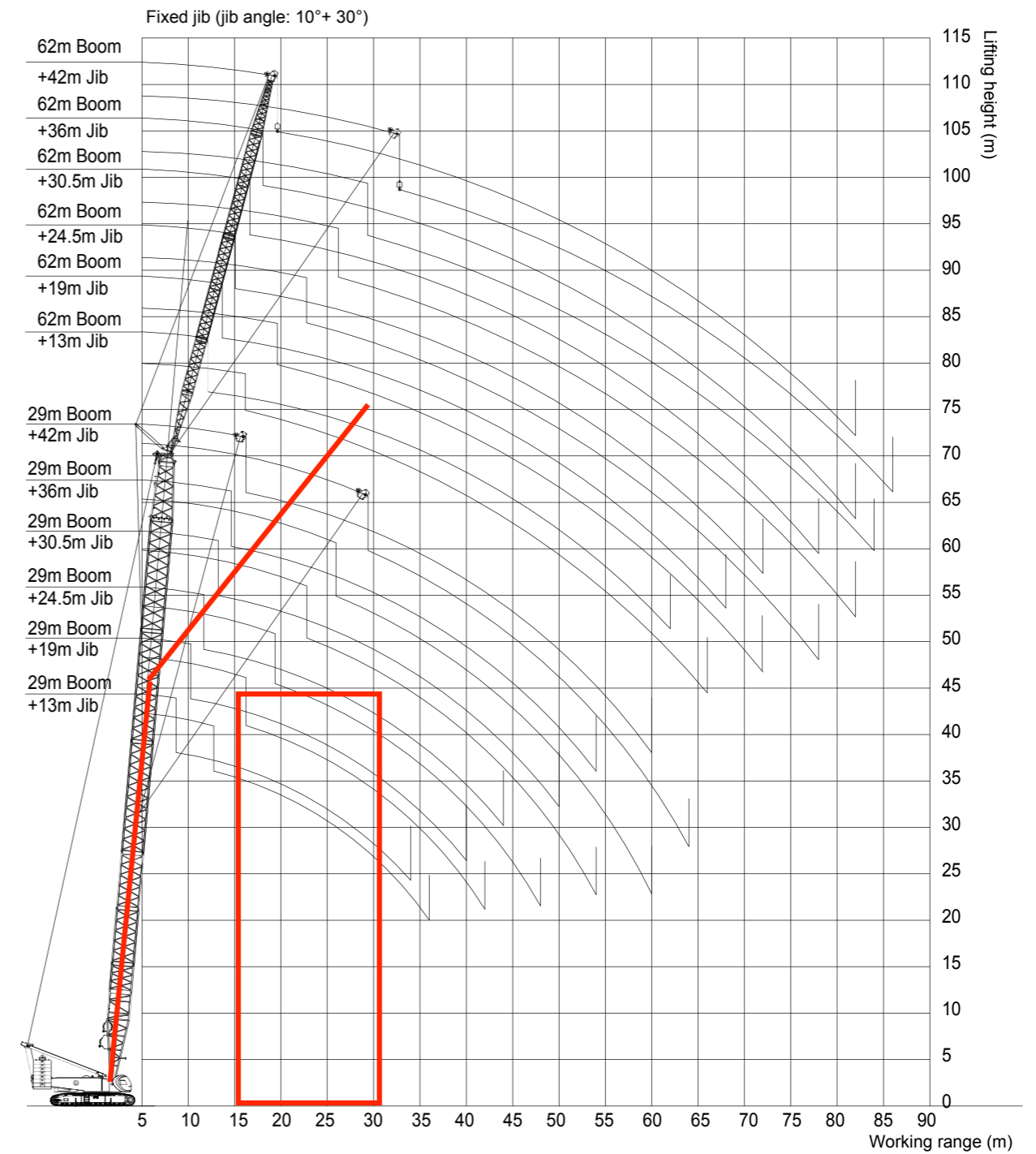
FJ OPERATING CONDITION (FIXED JIB OPERATING CONDITION)

Jib length (m)	Fixed Jib Combination Jib insert		Boom length (m)	Angle between boom and jib
	6 m	11.5 m		
13	-	-	29~62	10°, 30°
19	1	-	29~62	10°, 30°
24.5	-	1	29~62	10°, 30°
30.5	1	1	29~62	10°, 30°
36	-	2	29~62	10°, 30°
42	1	2	29~62	10°, 30°



Fixed Jib Operating Condition

OPERATING RANGE DIAGRAM OF FJ OPERATING CONDITION



LOAD CHART (LJ OPERATING CONDITION)

**SCC8260 Load Chart under FJ Operating Condition
(not including pulley block on the boom tip)**

Boom length 29-62m Jib 13m-42m Rear counterweight 100t Central counterweight 46t Unit: t

Boom length (m)	29						35						Boom length (m)
	Jib length (m) Range (m)												
	13	19	24.5	30.5	36	42	13	19	24.5	30.5	36	42	
9	64.1												9
10	64.4						64.4						10
12	59.3	52.9					62.7	54.2					12
14	53.1	49.7	44.4	34.7			56.6	51.5	45.2				14
16	47.9	44.7	38.9	31.9	24.5		51.4	47.3	41.6	32.8	24.1		16
18	43.7	40.6	34.1	28.1	23.7	17.4	47.1	43.2	36.5	29.9	23.4	17.2	18
20	40.1	37.2	30.4	25.0	21.8	16.8	42.5	39.8	32.6	26.8	22.7	16.7	20
22	37.1	34.4	27.5	22.7	19.7	16.2	38.0	36.9	29.8	24.2	20.9	16.1	22
24	34.1	31.8	24.9	20.5	17.9	15.7	33.8	34.0	26.9	22.1	19.0	15.6	24
26	30.5	29.3	22.9	18.8	16.3	14.4	34.2	30.8	24.8	20.1	17.5	15.2	26
28	29.2	26.9	20.9	17.3	15.1	13.2	30.6	27.6	23.0	18.7	16.1	14.0	28
30	28.0	25.0	19.4	16.0	13.9	12.2	29.3	25.0	21.4	17.3	14.9	13.0	30
32	26.9	23.0	18.1	14.9	12.8	11.3	26.6	22.7	19.9	16.1	14.0	11.9	32
34	24.5	22.5	17.0	13.9	12.0	10.5	24.9	22.1	18.6	15.1	12.9	11.1	34
36		21.8	16.7	13.1	11.8	9.8	23.3	21.4	17.4	14.2	12.1	10.4	36
38		20.1	16.2	12.2	11.6	9.7	21.3	19.6	16.4	13.3	11.4	9.8	38
40		18.5	15.8	11.5	11.1	9.1	19.5	18.1	15.5	12.6	10.7	9.2	40
42			15.0	11.3	10.5	9.0		16.7	15.4	11.9	10.5	9.0	42
44			14.3	10.7	9.9	8.5		15.4	14.5	11.3	10.2	8.5	44
46				10.3	9.4	8.0			13.5	10.7	9.7	8.0	46
48				9.8	8.9	7.7			12.6	10.2	9.1	7.6	48
50				9.4	8.4	7.1			11.6	9.7	8.7	7.2	50
52					8.0	6.8				9.3	8.4	6.8	52
54					6.8	6.5				8.9	7.9	6.5	54
56						6.1					7.5	6.2	56
58						5.9					7.2	5.9	58
60						5.5					7.0	5.6	60
62											5.4	62	
64											5.1	64	

Notes:

- The actual hoisting capacity of the crane is a value that the rated value in the table minus the total weights of hooks, slings, and wire ropes winding on the hook and boom tip.
- The rated load in the table is the value under the condition that the non-traveling heavy load is lifted slowly and steadily from the solid and flat ground.

LOAD CHART (LJ OPERATING CONDITION)

**SCC8260 Load Chart under FJ Operating Condition
(not including pulley block on the boom tip)**

Boom length 29-62m Jib 13m-42m Rear counterweight 100t Central counterweight 46t Unit: t

Boom length (m)	41						47						Boom length (m)
	Jib length (m) Range (m)												
	13	19	24.5	30.5	36	42	13	19	24.5	30.5	36	42	
10													10
12	63.3	53.0					64.1						12
14	57.3	47.7	42.5				59.3	53.1					14
16	52.6	43.7	38.5	30.5			51.1	50.4	42.8	30.7			16
18	46.4	40.4	35.5	29.7	22.1		44.6	44.3	40.9	30.1	22.5		18
20	41.0	37.8	32.9	27.8	21.5	16.6	39.5	39.2	37.2	29.4	22.0	16.3	20
22	36.5	35.2	30.8	25.4	20.9	16.1	35.2	35.0	33.8	27.0	21.4	15.8	22
24	32.8	32.7	29.0	23.3	20.0	15.6	33.6	31.5	31.0	24.7	20.9	15.5	24
26	29.6	29.6	26.4	21.5	18.2	15.1	32.2	28.5	28.5	22.8	19.4	15.0	26
28	30.2	26.9	24.5	20.0	17.0	14.7	31.0	25.9	26.0	21.3	17.9	14.6	28
30	27.1	24.5	22.9	18.4	15.7	14.2	28.1	23.6	23.7	19.9	16.8	14.3	30
32	27.5	22.3	21.4	17.2	14.6	13.2	27.0	21.6	21.8	18.5	15.7	13.5	32
34	24.9	23.0	20.0	16.1	13.8	12.4	24.4	21.1	20.0	17.5	14.6	12.5	34
36	22.7	20.9	18.8	15.2	12.9	11.5	22.2	20.5	18.4	16.4	13.9	11.9	36
38	21.8	19.2	17.4	14.3	12.1	10.8	21.3	18.7	17.0	15.5	13.1	11.2	38
40	20	19.0	16.0	13.6	11.5	10.2	19.5	18.2	15.5	14.6	12.4	10.5	40
42	18.3	17.7	15.7	12.9	10.8	9.7	17.8	16.7	15.3	13.9	11.7	9.9	42
44	16.8	16.3	14.5	12.2	10.3	9.0	16.3	16.2	15.0	13.2	11.1	9.4	44
46		15.1	13.4	11.6	9.8	8.7	15	15.6	13.8	12.5	10.5	8.9	46
48		14.9	12.4	11.0	9.3	8.2	13.7	14.4	13.4	11.5	10.1	8.5	48
50		13.7	11.4	10.6	8.8	7.7		13.2	12.4	10.6	9.6	8.0	50
52			10.6	10.1	8.5	7.3		12.2	11.4	9.8	9.2	7.7	52
54			10.5	10.2	8.0	7.0		11.2	10.5	9.7	8.7	7.4	54
56				9.4	7.7	6.7			9.7	9.5	8.4	7.0	56
58				8.7	7.4	6.4			9.0	8.8	8.0	6.8	58
60				8.6	7.1	6.1				8.2	7.4	6.4	60
62					6.8	5.9				7.9	6.9	6.2	62
64					6.5	5.5				7.6	6.4	5.9	64
66						5.3					5.9	5.6	66
68						5.1					5.4	5.4	68
70						4.9						5.1	70
72												4.7	72
74												4.4	74

Notes:

- The actual hoisting capacity is value that the rated value in the table minus the weight of all lifting tools (including hooks, slings, and wire ropes winding on the hooks and boom tip).
- The rated load in the table is the value under the condition that the non-traveling heavy load is lifted slowly and steadily from the solid and flat ground.

LOAD CHART (LJ OPERATING CONDITION)

SCC8260 Load Chart under FJ Operating Condition (not including pulley block on the boom tip)

Boom length 29-62m Jib 13m-42m Rear counterweight 100t Central counterweight 46t Unit: t

Boom length (m)	53						56						Boom length (m)
	Jib length (m) Range (m)												
	13	19	24.5	30.5	36	42	13	19	24.5	30.5	36	42	
10													10
12	58.8						58.8						12
14	56.9	52.7					55.7	49.5					14
16	49.1	48.5	39.8				48.2	47.6	38.2				16
18	43.0	42.6	39.2	28.8	21.8		42.1	41.8	37.7	28.1			18
20	38.0	37.7	37.6	28.3	21.4	16.0	37.2	37.0	36.8	27.6	22.4	16.9	20
22	33.8	33.7	33.6	27.8	20.9	15.6	35.3	33.0	32.9	27.2	22.0	16.5	22
24	32.3	30.3	30.2	25.9	20.5	15.2	31.6	29.6	29.6	26.6	21.5	16.1	24
26	29.1	27.3	27.4	24.1	20.0	14.9	30.2	26.7	26.8	24.5	21.0	15.8	26
28	28.3	24.8	24.9	22.4	18.8	14.5	28.9	24.2	24.3	22.8	20.6	15.4	28
30	26.9	22.6	22.7	20.9	17.7	14.2	27.6	23.4	22.1	21.5	19.2	15.0	30
32	27.2	22.0	20.8	19.6	16.5	13.8	26.5	22.8	20.3	20.2	18.1	14.6	32
34	24.8	21.3	19.1	18.5	15.6	13.3	24.1	22.7	18.5	18.6	17.0	14.3	34
36	22.7	20.7	17.5	17.3	14.6	12.5	22	22.4	17.0	17.1	15.9	13.7	36
38	20.7	19.1	16.1	16.2	13.9	11.9	20.2	20.5	16.6	15.7	15.1	12.9	38
40	18.9	18.5	15.8	14.9	13.2	11.1	18.4	18.8	16.3	14.5	14.4	12.2	40
42	17.2	17.9	15.5	13.8	12.5	10.6	16.9	17.3	15.0	13.4	13.7	11.5	42
44	15.7	16.4	14.3	12.8	11.9	10.1	15.4	15.9	14.6	12.3	13.0	11.0	44
46	14.4	15	13.3	11.8	11.2	9.5	14	14.6	14.0	11.4	12.2	10.5	46
48	13.1	13.8	12.2	11.0	10.8	9.1	12.7	13.4	13.8	10.5	11.4	9.9	48
50	12	12.6	11.1	10.1	10.2	8.6	11.6	12.2	12.7	10.3	10.5	9.4	50
52	10.9	11.5	10.9	10.0	9.5	8.2	10.5	11.2	11.7	10.1	9.7	9.0	52
54	9.9	10.6	10.0	9.8	8.8	7.9	9.6	10.2	10.7	9.4	9.0	8.6	54
56		9.7	9.4	9.3	8.2	7.5	8.7	9.3	9.8	9.4	8.2	8.2	56
58		8.8	9.3	9.0	7.5	7.2		8.4	9	9.3	7.6	7.7	58
60			8.6	8.9	7.0	6.9		7.7	8.2	8.5	7.0	7.1	60
62			7.8	8.2	6.4	6.5			7.5	7.8	6.4	6.5	62
64			7.1	7.5	5.9	6.0			6.8	7.1	5.9	6.0	64
66				6.8	5.4	5.6			6.1	6.5	5.4	5.4	66
68				6.2	5.0	5.1				5.9	4.9	5.0	68
70					4.5	4.7				5.3	4.5	4.6	70
72					4.1	4.2					4.0	4.1	72
74					3.7	3.8					3.6	3.7	74
76						3.5					3.2	3.3	76
78						3.2						3.0	78
80												2.6	80

Notes:

1. The actual hoisting capacity is value that the rated value in the table minus the weight of all lifting tools (including hooks, slings, and wire ropes winding on the hooks and boom tip).
2. The rated load in the table is the value under the condition that the non-traveling heavy load is lifted slowly and steadily from the solid and flat ground.

LOAD CHART (LJ OPERATING CONDITION)

SCC8260 Load Chart under FJ Operating Condition (not including pulley block on the boom tip)

Boom length 29-62m Jib 13m-42m Rear counterweight 100t Central counterweight 46t Unit: t

Boom length (m)	59						62						Boom length (m)
	Jib length (m) Range (m)												
	13	19	24.5	30.5	36	42	13	19	24.5	30.5	36	42	
14	54.7	46.5					53.6						14
16	47.3	46.0	36.5				46.4	43.5	35.0				16
18	41.4	41.1	36.1	27.3			40.5	40.3	34.7	26.6			18
20	36.5	36.4	35.6	26.9	20.7		35.8	35.6	34.2	26.3	20.3		20
22	34.7	32.5	32.4	26.5	20.3	15.3	36.0	31.8	31.7	25.8	20.0	15.2	22
24	31.0	29.1	29.1	26.0	19.9	15.0	32.3	28.5	28.5	25.4	19.6	14.9	24
26	30.7	26.3	26.3	25.2	19.5	14.6	30.7	25.7	25.8	25.0	19.3	14.6	26
28	29.9	23.8	23.9	23.6	19.1	14.3	30.8	24.8	23.3	23.3	18.9	14.2	28
30	28.6	23.0	21.8	21.8	18.5	14.0	27.9	23.9	21.2	21.2	18.5	14.0	30
32	26	22.9	19.9	19.9	17.3	13.8	25.3	23.8	19.4	19.4	17.7	13.7	32
34	23.7	22.1	18.2	18.2	16.3	13.4	23	23.3	17.7	17.8	16.7	13.4	34
36	21.6	21.9	16.7	16.7	15.5	13.1	20.9	21.3	17.3	16.3	15.8	13.1	36
38	19.7	20.1	16.3	15.4	14.6	12.4	19.1	19.4	16.8	14.9	14.9	12.7	38
40	18	18.4	15.9	14.2	13.9	11.7	17.4	17.8	16.3	13.7	13.8	11.9	40
42	16.5	16.9	14.6	13.1	13.1	11.2	15.9	16.3	14.9	12.6	12.8	11.4	42
44	15.1	15.5	13.4	12.0	12.2	10.5	14.5	14.9	13.8	11.6	11.7	10.7	44
46	13.8	14.2	12.4	11.1	11.2	10.0	13.2	13.6	12.9	11.4	10.8	10.3	46
48	12.6	13	11.4	10.9	10.4	9.5	12	12.4	12.8	11.1	10.0	9.8	48
50	11.4	11.9	11.1	10.6	9.5	9.2	10.9	11.3	11.8	10.6	9.2	9.2	50
52	10.4	10.9	10.7	10.4	9.4	9.3	9.9	10.3	10.8	10.1	8.4	8.5	52
54	9.4	10	10.4	9.9	8.6	8.7	9	9.4	9.8	10.1	7.7	7.8	54
56	8.5	9.1	9.5	9.7	8.0	8.0	8.1	8.5	9	9.2	7.1	7.1	56
58	7.7	8.3	8.7	8.9	7.4	7.4	7.3	7.7	8.1	8.4	6.5	6.5	58
60		7.5	7.9	8.2	6.7	6.8	6.5	6.9	7.4	7.6	5.9	6.0	60
62		6.7	7.2	7.4	6.2	6.2		6.2	6.7	6.9	5.4	5.5	62
64		6.1	6.5	6.8	5.6	5.7		5.5	6	6.2	4.9	5.0	64
66			5.9	6.1	5.1	5.2		4.9	5.3	5.6	4.4	4.5	66
68			5.3	5.5	4.6	4.7			4.7	5	4.0	4.1	68
70				4.9	4.2	4.2			4.2	4.4	3.5	3.6	70
72				4.4	3.8	3.8				3.9	3.2	3.2	72
74				3.9	3.4	3.4				3.4	2.8	2.9	74
76					3.0	3.0				2.9	2.4	2.5	76
78					2.6	2.6					2.0	2.1	78
80						2.3					1.7	1.8	80
82						2.0						1.5	82
84						1.7						1.2	84

Notes:

1. The actual hoisting capacity is value that the rated value in the table minus the weight of all lifting tools (including hooks, slings, and wire ropes winding on the hooks and boom tip).
2. The rated load in the table is the value under the condition that the non-traveling heavy load is lifted slowly and steadily from the solid and flat ground.

LOAD CHART (LJ OPERATING CONDITION)

**SCC8260 Load Chart under FJ Operating Condition
(not including pulley block on the boom tip)**

Boom length 29-62m Jib 13m-42m Rear counterweight 100t Central counterweight 46t													Unit: t
Boom length (m)	29						35						Boom length (m)
Jib length (m) Range (m)	13	19	24.5	30.5	36	42	13	19	24.5	30.5	36	42	Jib length (m) Range (m)
9													9
10													10
12													12
14	27.8						28.4						14
16	26.2						26.9						16
18	24.7	20.6					25.5	21					18
20	23.4	19.4	17.5				24.3	19.9					20
22	22.3	18.4	16.5				23.2	19	16.8				22
24	21.3	17.5	15.7	13.9			22.3	18.1	16	14.1			24
26	20.5	16.7	14.9	13.2			21.4	17.3	15.3	13.5			26
28	19.7	16	14.2	12.6	11.8		20.7	16.7	14.7	12.9	12		28
30	19	15.3	13.6	12	11.2		20	16	14.1	12.3	11.5		30
32	18.4	14.8	13	11.5	10.7	10	19.4	15.5	13.5	11.8	11	10.3	32
34	17.9	14.3	12.5	11	10.3	9.5	18.8	14.9	13.1	11.4	10.5	9.8	34
36	17.5	13.8	12.1	10.5	9.8	9.1	18.3	14.5	12.6	10.9	10.1	9.4	36
38		13.4	11.7	10.2	9.4	8.7	17.9	14.1	12.3	10.6	9.8	9	38
40		13	11.3	9.8	9.1	8.4	17.6	13.7	11.9	10.2	9.4	8.7	40
42		12.7	11	9.5	8.7	8.1	17.3	13.3	11.5	9.9	9.1	8.4	42
44			10.7	9.2	8.4	7.8		13	11.2	9.6	8.8	8.1	44
46			10.5	8.9	8.2	7.5		12.8	10.9	9.3	8.5	7.8	46
48			10.2	8.6	7.9	7.2		10.7	9	8.2	7.6	48	
50				8.4	7.7	6.9		10.5	8.8	8	7.3	50	
52				8.2	7.4	6.6		10.3	8.6	7.8	7	52	
54				8	7.2	6.4			8.4	7.6	6.8	54	
56					7.1	6.2			8.2	7.4	6.5	56	
58					6.9	5.9			8.1	7.2	6.3	58	
60					6.8	5.7				7.1	6	60	
62						5.5				6.9	5.9	62	
64						5.3				6.8	5.7	64	
66											5.5	66	
68											5.4	68	
70											5.2	70	

Notes:

- The actual hoisting capacity is value that the rated value in the table minus the weight of all lifting tools (including hooks, slings, and wire ropes winding on the hooks and boom tip).
- The rated load in the table is the value under the condition that the non-traveling heavy load is lifted slowly and steadily from the solid and flat ground.

LOAD CHART (LJ OPERATING CONDITION)

**SCC8260 Load Chart under FJ Operating Condition
(not including pulley block on the boom tip)**

Boom length 29-62m Jib 13m-42m Rear counterweight 100t Central counterweight 46t													Unit: t
Boom length (m)	41						47						Boom length (m)
Jib length (m) Range (m)	13	19	24.5	30.5	36	42	13	19	24.5	30.5	36	42	Jib length (m) Range (m)
10													10
12													12
14													14
16	26.9						27.9						16
18	25.7	20.9					26.7						18
20	24.6	19.9					25.6	20.7					20
22	23.6	19	16.7				24.7	19.8	17.4				22
24	22.7	18.2	16				23.8	19.1	16.7				24
26	21.9	17.5	15.3	13.3			23	18.4	16	13.9			26
28	21.1	16.9	14.7	12.8	11.8		22.2	17.7	15.4	13.3			28
30	20.4	16.3	14.2	12.3	11.4		21.6	17.1	14.9	12.8	11.8		30
32	19.8	15.7	13.7	11.8	10.9	10	20.9	16.6	14.4	12.4	11.4	10.4	32
34	19.3	15.2	13.2	11.4	10.5	9.6	20.4	16.1	13.9	12	11	10	34
36	18.8	14.8	12.8	11	10.1	9.3	19.9	15.6	13.5	11.6	10.6	9.7	36
38	18.3	14.3	12.4	10.5	9.8	8.9	19.4	15.2	13.1	11.2	10.3	9.4	38
40	17.9	14	12.1	10.1	9.4	8.6	18.9	14.8	12.7	10.9	9.9	9	40
42	17.6	13.6	11.7	9.6	9.1	8.3	18.5	14.4	12.4	10.6	9.6	8.7	42
44	17.3	13.3	11.4	9.2	8.8	8	16.9	14.1	12.1	10.3	9.3	8.5	44
46	15.8	13	11.1	8.9	8.6	7.8	15.5	13.8	11.8	10	9.1	8.2	46
48		12.8	10.9	8.5	8.3	7.5	14.2	13.5	11.5	9.7	8.8	8	48
50		12.5	10.6	8.3	8.1	7.3	12.9	13.3	11.3	9.5	8.6	7.7	50
52		12.3	10.4	8	7.9	7.1		12.8	11.1	9.3	8.4	7.5	52
54			10.2	7.8	7.7	6.9		11.7	10.8	9.1	8.2	7.3	54
56			10.1	7.7	7.5	6.7		10.7	10.6	8.9	8	7.1	56
58				7.5	7.3	6.5			10.5	8.7	7.8	6.9	58
60				7.4	7.1	6.3			9.8	8.5	7.6	6.8	60
62				7.3	7	6.1			8.9	8.4	7.5	6.5	62
64					6.9	5.9				8.2	7.3	6.3	64
66					6.7	5.8				8.1	7.2	6.2	66
68					6.6	5.6				7.4	7	6	68
70						5.4					6.9	5.8	70
72						5.3					6.7	5.7	72
74						5.2						5.5	74
76												5.3	76
78												5.3	78

Notes:

- The actual hoisting capacity is value that the rated value in the table minus the weight of all lifting tools (including hooks, slings, and wire ropes winding on the hooks and boom tip).
- The rated load in the table is the value under the condition that the non-traveling heavy load is lifted slowly and steadily from the solid and flat ground.

LOAD CHART (LJ OPERATING CONDITION)

SCC8260 Load Chart under FJ Operating Condition (not including pulley block on the boom tip)

Boom length 29-62m Jib 13m-42m Rear counterweight 100t Central counterweight 46t													Unit: t
Boom length (m)	53						56						Boom length (m)
Jib length (m) Range (m)	13	19	24.5	30.5	36	42	13	19	24.5	30.5	36	42	Jib length (m) Range (m)
10													10
12													12
14													14
16	28.3						28.5						16
18	27.2						27.4						18
20	26.2	21					26.4	21.1					20
22	25.2	20.2					25.5	20.3					22
24	24.4	19.4	16.9				24.6	19.6	17				24
26	23.6	18.8	16.3	14			23.9	19	16.4				26
28	22.9	18.2	15.7	13.5			23.2	18.3	15.9	13.6			28
30	22.2	17.6	15.2	13.1	12		22.5	17.8	15.4	13.2	12.1		30
32	21.6	17.1	14.7	12.6	11.6		21.9	17.3	14.9	12.7	11.7		32
34	21	16.6	14.3	12.2	11.2	10.2	21.4	16.8	14.4	12.3	11.3	10.2	34
36	20.5	16.1	13.9	11.8	10.8	9.8	20.8	16.3	14	12	10.9	9.9	36
38	20	15.7	13.5	11.5	10.5	9.5	20.4	15.9	13.6	11.6	10.6	9.6	38
40	19.6	15.3	13.1	11.2	10.2	9.2	19.5	15.5	13.3	11.3	10.3	9.3	40
42	18	14.9	12.8	10.9	9.9	8.9	17.7	15.2	12.9	11	10	9	42
44	16.4	14.6	12.4	10.6	9.6	8.7	16.1	14.8	12.6	10.7	9.7	8.7	44
46	15	14.3	12.2	10.3	9.3	8.4	14.7	14.5	12.3	10.4	9.4	8.5	46
48	13.7	14	11.9	10	9.1	8.2	13.4	14.2	12.1	10.2	9.2	8.3	48
50	12.5	13.5	11.7	9.8	8.9	7.9	12.2	13.2	11.9	9.9	9	8	50
52	11.4	12.3	11.4	9.6	8.6	7.7	11.1	12	11.6	9.7	8.8	7.8	52
54	10.3	11.3	11.2	9.4	8.4	7.5	10	11	11.4	9.5	8.5	7.6	54
56		10.3	11	9.2	8.2	7.3	9.1	10	10.8	9.3	8.4	7.4	56
58		9.4	10.2	9	8	7.2	8.1	9.1	9.9	9.1	8.2	7.3	58
60		8.5	9.3	8.8	7.9	7		8.2	9	8.9	8	7.1	60
62			8.5	8.6	7.7	6.8		7.4	8.2	8.8	7.8	6.9	62
64			7.7	8.4	7.6	6.6		6.6	7.4	8.1	7.7	6.8	64
66			7	7.7	7.4	6.4			6.7	7.4	7.5	6.6	66
68				7	7.3	6.2			6	6.7	7.3	6.3	68
70				6.3	6.9	6				6	6.6	6.2	70
72				5.7	6.3	5.9				5.4	6	6	72
74					5.7	5.8				4.8	5.4	5.8	74
76					5.1	5.6					4.8	5.3	76
78					4.5	5					4.3	4.7	78
80						4.5					3.7	4.2	80
82						4						3.7	82
84						3.5						3.2	84
86												2.7	86

Notes:

1. The actual hoisting capacity is value that the rated value in the table minus the weight of all lifting tools (including hooks, slings, and wire ropes winding on the hooks and boom tip).
2. The rated load in the table is the value under the condition that the non-traveling heavy load is lifted slowly and steadily from the solid and flat ground.

LOAD CHART (LJ OPERATING CONDITION)

SCC8260 Load Chart under FJ Operating Condition (not including pulley block on the boom tip)

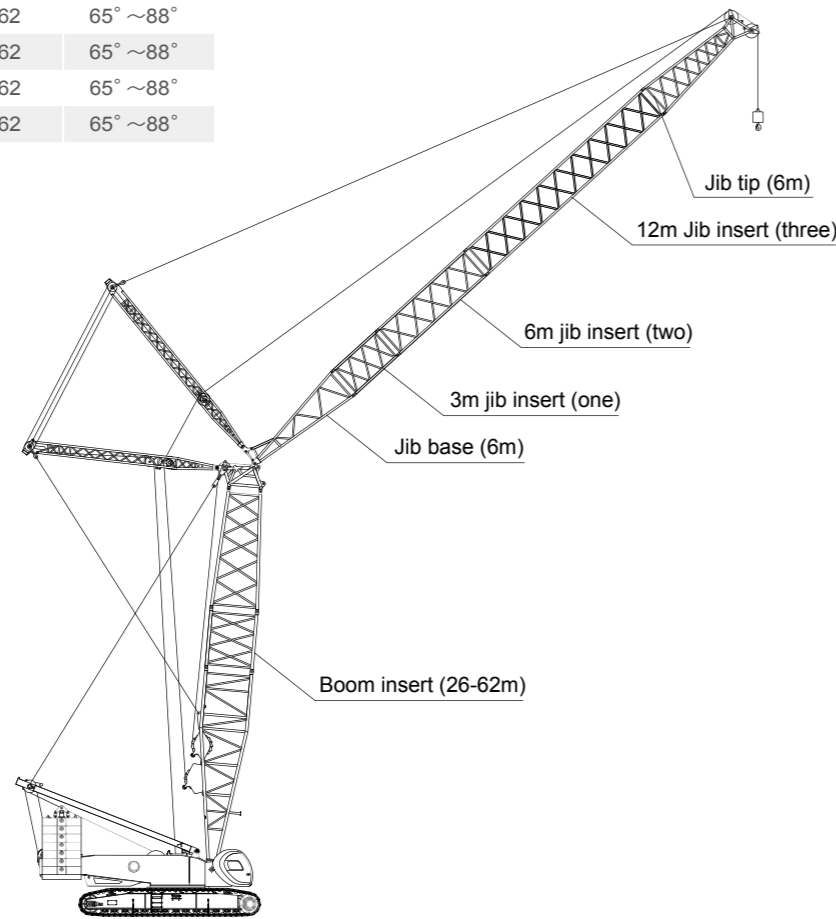
Boom length 29-62m Jib 13m-42m Rear counterweight 100t Central counterweight 46t													Unit: t
Boom length (m)	59						62						Boom length (m)
Jib length (m) Range (m)	13	19	24.5	30.5	36	42	13	19	24.5	30.5	36	42	Jib length (m) Range (m)
10													10
12													12
14													14
16													16
18	27.6						27.7						18
20	26.6	21.2					26.8						20
22	25.7	20.5					25.9	20.6					22
24	24.9	19.8	17.1				25.1	19.9	17.2				24
26	24.1	19.1	16.5				24.4	19.3	16.7				26
28	23.5	18.5	16	13.7			23.7	18.7	16.1	13.8			28
30	22.8	18	15.5	13.3	12.1		23.1	18.2	15.6	13.4			30
32	22.2	17.5	15	12.8	11.7		22.5	17.7	15.2	12.9	11.8		32
34	21.6	17	14.6	12.5	11.4	10.3	21.9	17.2	14.7	12.6	11.4	10.3	34
36	21.1	16.5	14.2	12.1	11	10	21.4	16.7	14.3	12.2	11.1	10	36
38	20.6	16.1	13.8	11.7	10.7	9.7	20.3	16.3	14	11.9	10.8	9.7	38
40	19.1	15.7	13.5	11.4	10.4	9.4	18.5	15.9	13.6	11.5	10.5	9.4	40
42	17.5	15.4	13.1	11.1	10.1	9.1	16.9	15.6	13.3	11.2	10.2	9.2	42
44	16	15	12.8	10.8	9.8	8.8	15.4	15.2	13	11	9.9	8.9	44
46	14.6	14.7	12.5	10.6	9.6	8.6	14.1	14.9	12.7	10.7	9.7	8.7	46
48	13.3	14.2	12.3	10.3	9.3	8.4	12.8	13.7	12.4	10.4	9.4	8.4	48
50	12.1	13	12	10.1	9.1	8.1	11.6	12.5	12.2	10.2	9.2	8.2	50
52	10.9	11.9	11.8	9.9	8.9	7.9	10.6	11.4	12	10	9	8	52
54	9.9	10.8	11.6	9.6	8.7	7.7	9.6	10.4	11.1	9.8	8.8	7.8	54
56	9	9.9	10.7	9.4	8.5	7.5	8.6	9.4	10.2	9.6	8.6	7.6	56
58	8.1	9	9.8	9.3	8.3	7.4	7.7	8.5	9.3	9.4	8.4	7.5	58
60	7.2	8.1	8.9	9.1	8.1	7.2	6.9	7.7	8.4	9	8.2	7.3	60
62		7.3	8.1	8.7	8	7	6.1	6.9	7.6	8.2	8.1	7.1	62
64		6.5	7.3	7.9	7.8	6.8		6.1	6.9	7.5	7.9	6.9	64
66		5.8	6.6	7.2	7.6	6.6		5.4	6.2	6.7	7.3	6.8	66
68			5.9	6.5	7	6.5		4.7	5.5	6.1	6.6	6.6	68
70			5.3	5.8	6.4	6.3			4.8	5.4	6	6.4	70
72				5.2	5.8	6.2			4.2	4.8	5.3	5.8	72
74				4.6	5.2	5.6			3.6	4.2	4.7	5.2	74
76				4	4.6	5				3.6	4.2	4.6	76
78					4	4.5				3.1	3.6	4.1	78
80					3.5	3.9					3.1	3.5	80
82					3	3.4					2.6	3	82
84						2.9					2.1	2.5	84
86						2.5						2.1	86
88						2						1.6	88

Notes:

1. The actual hoisting capacity is value that the rated value in the table minus the weight of all lifting tools (including hooks, slings, and wire ropes winding on the hooks and boom tip).
2. The rated load in the table is the value under the condition that the non-traveling heavy load is lifted slowly and steadily from the solid and flat ground.

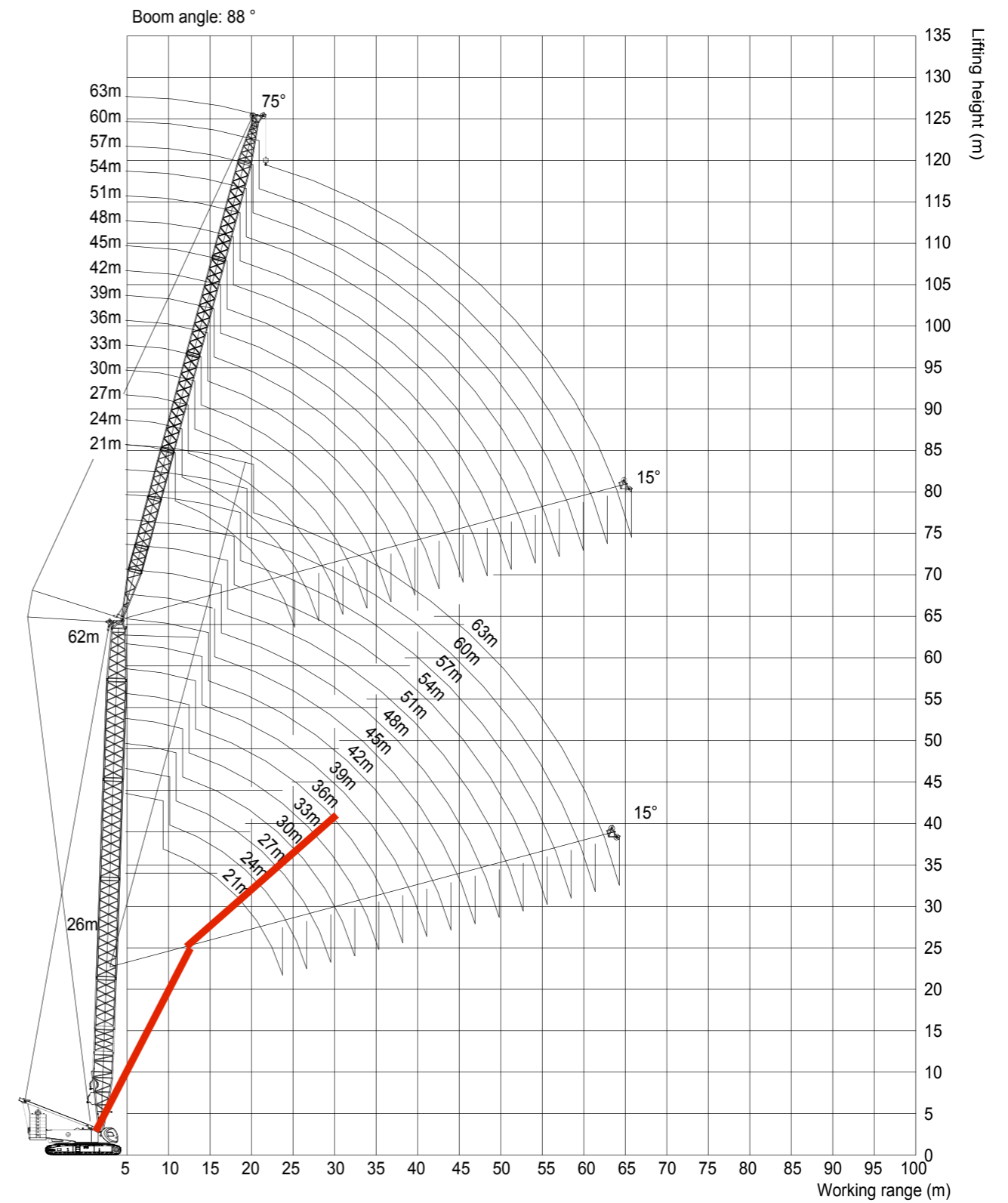
LUFFING JIB LJ OPERATING CONDITION

Jib length (m)	Luffing Jib Combination			Boom length (m)	Boom angle
	3 m	6 m	12m		
21	1	1	-	26~62	65° ~88°
24	-	2	-	26~62	65° ~88°
27	1	2	--	26~62	65° ~88°
30	--	1	1	26~62	65° ~88°
33	1	1	1	26~62	65° ~88°
36	-	2	1	26~62	65° ~88°
39	1	2	1	26~62	65° ~88°
42	--	1	2	26~62	65° ~88°
45	1	1	2	26~62	65° ~88°
48	--	2	2	26~62	65° ~88°
51	1	2	2	26~62	65° ~88°
54	--	1	3	26~62	65° ~88°
57	1	1	3	26~62	65° ~88°
60	-	2	3	26~62	65° ~88°
63	1	2	3	26~62	65° ~88°



Luffing Jib Sections Combination

OPERATING RANGE DIAGRAM OF LJ OPERATING CONDITION



LUFFING JIB LOAD CHART

**SCC8260 Luffing Jib Load Chart under LJ Operating Condition
(not including pulley block on the boom tip)**

Boom length 26-62m Jib 21m-63m Rear counterweight 100t Central counterweight 46t Unit: t

Boom length (m)	26												Boom length (m)
	21						24						
Boom angle (°) Load radius (m)	88	85	80	75	70	65	88	85	80	75	70	65	Boom angle (°) Load radius (m)
10	90						89.1						10
12	88	89.8					84.8						12
14	77	84.3					73.9	82.6					14
16	67	72.4	71.9				64.6	71.4					16
18	59	62.9	63.8				56.9	62.7	62.7				18
20	50	54.7	57.4	55.4			51.2	55.2	56.4				20
22	38	45.5	51.7	50.1			44.8	49.6	51.2	49.4			22
24		34.2	46.3	44.9	43.5		37.0	43.1	46.2	44.7			24
26			41.9	40.6	39.3			35.4	41.9	40.5	39.2		26
28				37.0	35.9	34.7			38.1	36.9	35.7		28
30					32.9	31.9			35.0	33.9	32.8	31.7	30
32						29.4				31.2	30.2	29.2	32
34											28.0	27.1	34
36												25.1	36
38													38
40													40
42													42
44													44
46													46
48													48
50													50
52													52
54													54
56													56
58													58
60													60

- Notes:
- The actual hoisting capacity is value that the rated value in the table minus the weight of all lifting tools (including hooks, slings, and wire ropes winding on the hooks and boom tip).
 - The rated load in the table is the value under the condition that the non-traveling heavy load is lifted slowly and steadily from the solid and flat ground.

LUFFING JIB LOAD CHART

**SCC8260 Luffing Jib Load Chart under LJ Operating Condition
(not including pulley block on the boom tip)**

Boom length 26-62m Jib 21m-63m Rear counterweight 100t Central counterweight 46t Unit: t

Boom length (m)	26												Boom length (m)
	27						30						
Boom angle (°) Load radius (m)	88	85	80	75	70	65	88	85	80	75	70	65	Boom angle (°) Load radius (m)
10													10
12	83.8						78.9						12
14	73.5	81.1					73.4						14
16	64.3	70.9					63.6	69.8					16
18	56.6	62.4	61.6				56.7	62.2					18
20	50.9	55.4	55.3				50.5	55.2	54.0				20
22	45.9	49.7	50.2				46.1	49.4	49.0				22
24	41.3	45.3	45.9	43.9			42.0	45.2	44.9	43.0			24
26	34.7	40.8	41.7	39.8			38.3	41.1	41.1	39.5			26
28	27.7	33.8	37.9	36.3	35.1		32.1	37.6	37.5	36.1			28
30		26.4	34.9	33.3	32.2		26.4	32.3	34.4	33.1	31.8		30
32			32.1	30.7	29.7	28.9		25.9	31.7	30.5	29.3		32
34				28.4	27.5	26.9			29.4	28.3	27.1	26.4	34
36					25.6	24.9				26.3	25.2	24.6	36
38						23.3				24.5	23.6	22.9	38
40											22.0	21.4	40
42												20.1	42
44													44
46													46
48													48
50													50
52													52
54													54
56													56
58													58
60													60

- Notes:
- The actual hoisting capacity is value that the rated value in the table minus the weight of all lifting tools (including hooks, slings, and wire ropes winding on the hooks and boom tip).
 - The rated load in the table is the value under the condition that the non-traveling heavy load is lifted slowly and steadily from the solid and flat ground.

LUFFING JIB LOAD CHART

**SCC8260 Luffing Jib Load Chart under LJ Operating Condition
(not including pulley block on the boom tip)**

Boom length 26-62m Jib 21m-63m Rear counterweight 100t Central counterweight 46t													Unit: t
Boom length (m)	26												Boom length (m)
Jib length (m)	33						36						Jib length (m)
Boom angle (°) Load radius (m)	88	85	80	75	70	65	88	85	80	75	70	65	Boom angle (°) Load radius (m)
10													10
12													12
14	72.7						70.2						14
16	63.2	68.6					62.9						16
18	55.8	61.1					55.8	60.1					18
20	50.3	55.0					50.0	54.1					20
22	45.5	49.2	48.6				45.4	49.1	47.4				22
24	41.7	44.5	44.5				41.4	44.3	43.4				24
26	38.4	40.8	41.0	38.3			37.9	40.6	39.9				26
28	33.3	37.6	37.7	35.2			35.1	37.4	37.0	34.8			28
30	28.3	33.1	34.6	32.3	31.1		30.8	34.5	34.0	32.1			30
32	23.6	28.2	31.9	29.8	28.7		26.8	30.9	31.4	29.6	28.5		32
34	18.9	23.3	29.6	27.5	26.6		22.3	26.6	29.1	27.5	26.4		34
36			26.0	25.7	24.8	24.3	18.4	22.0	27.0	25.5	24.6		36
38			20.6	23.9	23.0	22.7		17.9	25.2	23.8	22.9	22.0	38
40				22.3	21.6	21.3		23.6	22.2	21.4	20.6		40
42					20.3	19.9			20.9	20.1	19.3		42
44						18.7				18.9	18.1		44
46										17.7	17.1		46
48											16.1		48
50													50
52													52
54													54
56													56
58													58
60													60
62													62
64													64
66													66
68													68

Notes:

1. The actual hoisting capacity is value that the rated value in the table minus the weight of all lifting tools (including hooks, slings, and wire ropes winding on the hooks and boom tip).
2. The rated load in the table is the value under the condition that the non-traveling heavy load is lifted slowly and steadily from the solid and flat ground.

LUFFING JIB LOAD CHART

**SCC8260 Luffing Jib Load Chart under LJ Operating Condition
(not including pulley block on the boom tip)**

Boom length 26-62m Jib 21m-63m Rear counterweight 100t Central counterweight 46t														Unit: t
Boom length (m)	26													Boom length (m)
Jib length (m)	39						42						Jib length (m)	
Boom angle (°) Load radius (m)	88	85	80	75	70	65	88	85	80	75	70	65	Boom angle (°) Load radius (m)	
10														10
12														12
14	62.6													14
16	61.9						54.1							16
18	55.4	59.1					53.5							18
20	49.4	53.3					48.3	52.4						20
22	44.7	48.4					43.7	47.7						22
24	40.7	44.3	42.7				39.9	43.7	41.1					24
26	37.5	40.7	39.3				36.5	40.1	37.9					26
28	34.8	37.3	36.3	34.2			34.0	37.0	35.1					28
30	32.1	34.3	33.9	31.8			31.5	34.2	32.7	31.1				30
32	28.7	32.0	31.2	29.3			29.3	32.0	30.4	28.9				32
34	25.0	29.0	28.9	27.2	26.1		26.6	29.7	28.1	26.8				34
36	21.9	25.2	26.9	25.3	24.3		23.2	27.2	26.1	24.8	23.9			36
38	17.5	20.9	25.0	23.6	22.6	21.7	20.3	23.8	24.4	23.1	22.3			38
40	14.2	17.3	23.4	22.1	21.2	20.3	16.3	21.0	22.8	21.7	20.8	19.9		40
42			22.0	20.7	19.9	19.1	13.6	16.7	21.4	20.3	19.5	18.7		42
44			20.6	19.4	18.6	17.9		13.5	18.1	19.1	18.3	17.5		44
46				18.3	17.6	16.8			14.9	18.0	17.3	16.6		46
48					16.6	15.8				17.0	16.3	15.6		48
50						15.0					15.4	14.7		50
52												13.9		52
54													13.2	54
56														56
58														58
60														60
62														62
64														64
66														66
68														68

Notes:

1. The actual hoisting capacity is value that the rated value in the table minus the weight of all lifting tools (including hooks, slings, and wire ropes winding on the hooks and boom tip).
2. The rated load in the table is the value under the condition that the non-traveling heavy load is lifted slowly and steadily from the solid and flat ground.

LUFFING JIB LOAD CHART

**SCC8260 Luffing Jib Load Chart under LJ Operating Condition
(not including pulley block on the boom tip)**

Boom length 26-62m Jib 21m-63m Rear counterweight 100t Central counterweight 46t Unit: t

Boom length (m)	26												Boom length (m)
Jib length (m)	45						48						Jib length (m)
Boom angle (°) Load radius (m)	88	85	80	75	70	65	88	85	80	75	70	65	Boom angle (°) Load radius (m)
10													10
12													12
14													14
16	48.2												16
18	47.7						42.8						18
20	47.1	46.7					42.1	41.9					20
22	43.7	45.9					41.6	41.3					22
24	39.9	42.1					39.4	40.8					24
26	36.6	38.8	37.3				36.1	38.2					26
28	33.6	35.9	34.5				33.5	35.4	33.9				28
30	31.3	33.4	32.0				31.1	32.9	31.6				30
32	29.1	31.1	30.0	28.7			28.8	30.7	29.4				32
34	27.2	28.9	27.9	26.8			27.1	28.7	27.6	26.5			34
36	24.7	26.9	25.9	24.9			25.4	26.8	25.7	24.7			36
38	22.0	25.1	24.2	23.2	23.0		23.4	24.9	24.0	23.0	22.1		38
40	19.4	22.1	22.6	21.7	21.5		20.6	23.3	22.4	21.5	20.6		40
42	15.6	19.6	21.2	20.3	20.2	18.6	18.5	21.0	21.0	20.2	19.3		42
44	13.0	15.4	19.9	19.1	18.9	17.6	16.4	18.6	19.7	18.9	18.1	17.3	44
46	10.4	12.8	17.4	18.0	17.8	16.5	12.2	14.7	18.6	17.8	17.0	16.3	46
48			14.3	16.9	16.7	15.6	10.0	12.2	17.6	16.8	16.0	15.3	48
50				16.0	15.8	14.7		9.7	16.6	15.8	15.1	14.5	50
52				15.1	15.0	13.9			15.7	15.0	14.3	13.7	52
54					14.1	13.1				14.2	13.6	13.0	54
56						12.4					12.9	12.2	56
58												11.6	58
60													60
62													62
64													64
66													66
68													68

Notes:

1. The actual hoisting capacity is value that the rated value in the table minus the weight of all lifting tools (including hooks, slings, and wire ropes winding on the hooks and boom tip).
2. The rated load in the table is the value under the condition that the non-traveling heavy load is lifted slowly and steadily from the solid and flat ground.

LUFFING JIB LOAD CHART

**SCC8260 Luffing Jib Load Chart under LJ Operating Condition
(not including pulley block on the boom tip)**

Boom length 26-62m Jib 21m-63m Rear counterweight 100t Central counterweight 46t Unit: t

Boom length (m)	26												Boom length (m)
Jib length (m)	51						54						Jib length (m)
Boom angle (°) Load radius (m)	88	85	80	75	70	65	88	85	80	75	70	65	Boom angle (°) Load radius (m)
10													10
12													12
14													14
16													16
18	38.4						31.9						18
20	37.9						31.5						20
22	37.4	37.2					31.1	30.9					22
24	36.8	36.6					30.6	30.4					24
26	36.0	36.1					30.2	30.1					26
28	33.2	34.8	33.4				29.8	29.6					28
30	30.9	32.4	31.1				29.3	29.3	28.5				30
32	28.7	30.2	29.0				28.4	29.0	28.2				32
34	26.9	28.3	27.1	25.9			26.4	27.9	26.7				34
36	25.2	26.6	25.5	24.4			23.7	26.2	25.1	24.0			36
38	23.7	24.8	23.8	22.8			21.4	24.3	23.6	22.6			38
40	21.9	23.1	22.2	21.2	20.3		19.3	21.8	22.1	21.2			40
42	19.4	21.7	20.8	19.9	19.1		17.4	19.6	20.7	19.8	18.9		42
44	17.5	19.9	19.5	18.7	17.8		15.7	17.6	19.4	18.5	17.7		44
46	15.6	17.7	18.4	17.6	16.8	16.0	14.1	15.9	18.3	17.5	16.7		46
48	11.5	15.7	17.4	16.6	15.8	15.1	12.6	14.3	17.2	16.5	15.7	14.9	48
50	9.5	11.5	16.4	15.7	14.9	14.2	11.3	13.0	15.8	15.5	14.8	14.0	50
52		9.5	13.1	14.8	14.1	13.4	7.3	11.5	14.2	14.7	14.0	13.3	52
54			10.7	14.0	13.3	12.7	5.3	7.4	12.8	13.9	13.2	12.5	54
56				13.2	12.6	12.0		5.5	8.5	13.1	12.5	11.9	56
58				12.5	12.0	11.3			6.8	9.6	11.9	11.3	58
60					11.3	10.8				7.9	11.3	10.6	60
62						10.3					10.6	10.1	62
64												9.5	64
66													66
68													68

Notes:

1. The actual hoisting capacity is value that the rated value in the table minus the weight of all lifting tools (including hooks, slings, and wire ropes winding on the hooks and boom tip).
2. The rated load in the table is the value under the condition that the non-traveling heavy load is lifted slowly and steadily from the solid and flat ground.

LUFFING JIB LOAD CHART

**SCC8260 Luffing Jib Load Chart under LJ Operating Condition
(not including pulley block on the boom tip)**

Boom length 26-62m Jib 21m-63m Rear counterweight 100t Central counterweight 46t													Unit: t
Boom length (m)	38												Boom length (m)
Jib length (m)	21						24						Jib length (m)
Boom angle (°) Load radius (m)	88	85	80	75	70	65	88	85	80	75	70	65	Boom angle (°) Load radius (m)
10	89.8												10
12	87.4						83.0						12
14	78.2	75.7					76.8	74.3					14
16	68.9	66.6					67.7	65.4					16
18	61.6	59.5	56.3				60.5	58.5					18
20	52.8	53.6	50.8				54.6	52.7	49.9				20
22	37.4	49.0	46.2				49.9	48.1	45.5				22
24		45.0	42.3	40.0			45.8	44.2	41.7	39.3			24
26		41.4	39.2	36.9			40.1	40.9	38.4	36.3			26
28			36.0	34.2	32.2			37.8	35.7	33.6			28
30				31.4	29.7				32.9	31.2	29.5		30
32				28.9	27.5	25.9			30.3	28.8	27.3		32
34					25.4	24.0				26.6	25.2	23.8	34
36						22.3					23.5	22.1	36
38							20.8				21.9	20.6	38
40												19.3	40
42													42
44													44
46													46
48													48
50													50
52													52
54													54
56													56
58													58
60													60
62													62
64													64
66													66
68													68

Notes:

1. The actual hoisting capacity is value that the rated value in the table minus the weight of all lifting tools (including hooks, slings, and wire ropes winding on the hooks and boom tip).
2. The rated load in the table is the value under the condition that the non-traveling heavy load is lifted slowly and steadily from the solid and flat ground.

LUFFING JIB LOAD CHART

**SCC8260 Luffing Jib Load Chart under LJ Operating Condition
(not including pulley block on the boom tip)**

Boom length 26-62m Jib 21m-63m Rear counterweight 100t Central counterweight 46t													Unit: t
Boom length (m)	38												Boom length (m)
Jib length (m)	27						30						Jib length (m)
Boom angle (°) Load radius (m)	88	85	80	75	70	65	88	85	80	75	70	65	Boom angle (°) Load radius (m)
10													10
12	82.6						75.6						12
14	75.3						74.1						14
16	66.4	64.3					65.4	63.3					16
18	59.4	57.4					58.5	56.6					18
20	53.6	51.8					52.9	51.1					20
22	49.0	47.3	44.6				48.2	46.6	44.0				22
24	44.9	43.4	40.9				44.3	42.8	40.3				24
26	41.6	40.1	37.7	35.6			41.0	39.5	37.2				26
28	37.8	37.3	35.0	32.9			38.1	36.7	34.6	32.5			28
30		34.6	32.7	30.7			35.6	34.3	32.2	30.2			30
32			30.2	28.6	27.0		30.6	31.9	30.2	28.3			32
34			28.0	26.5	25.0			29.4	28.0	26.4	24.8		34
36				24.7	23.2	21.9			26.0	24.6	23.1		36
38				23.0	21.7	20.3			24.2	23.0	21.6	20.3	38
40					20.3	19.1				21.4	20.2	18.9	40
42						17.8					18.9	17.7	42
44						16.7					17.7	16.7	44
46												15.7	46
48													48
50													50
52													52
54													54
56													56
58													58
60													60
62													62
64													64
66													66
68													68

Notes:

1. The actual hoisting capacity is value that the rated value in the table minus the weight of all lifting tools (including hooks, slings, and wire ropes winding on the hooks and boom tip).
2. The rated load in the table is the value under the condition that the non-traveling heavy load is lifted slowly and steadily from the solid and flat ground.

LUFFING JIB LOAD CHART

**SCC8260 Luffing Jib Load Chart under LJ Operating Condition
(not including pulley block on the boom tip)**

Boom length 26-62m Jib 21m-63m Rear counterweight 100t Central counterweight 46t Unit: t

Boom length (m)	38												Boom length (m)
Jib length (m)	33						36						Jib length (m)
Boom angle (°) Load radius (m)	88	85	80	75	70	65	88	85	80	75	70	65	Boom angle (°) Load radius (m)
10													10
12													12
14	66.8						59.6						14
16	64.3						59.1						16
18	57.5	55.5					56.6	54.7					18
20	52.0	50.2					51.2	49.4					20
22	47.4	45.8					46.7	45.1					22
24	43.6	42.0	39.6				42.8	41.4	39.0				24
26	40.2	38.8	36.5				39.6	38.2	35.9				26
28	37.4	36.0	33.8				36.8	35.5	33.3				28
30	34.9	33.6	31.6	29.6			34.3	33.0	31.1	29.2			30
32	31.7	31.5	29.5	27.7			32.1	31.0	29.0	27.2			32
34		29.3	27.7	26.0	24.4		29.3	29.1	27.3	25.6			34
36		27.3	25.8	24.3	22.9		22.1	27.2	25.7	24.0	22.4		36
38			24.0	22.7	21.3			25.3	23.9	22.5	21.1		38
40			22.5	21.2	19.9	18.6		23.7	22.4	21.1	19.7		40
42				19.9	18.6	17.5		21.0	19.7	18.5	17.3		42
44				18.6	17.6	16.4			18.5	17.4	16.2		44
46					16.5	15.5			17.5	16.4	15.2		46
48						14.6				15.4	14.4		48
50						13.7				14.5	13.6		50
52											12.8		52
54													54
56													56
58													58
60													60
62													62
64													64
66													66
68													68

Notes:

1. The actual hoisting capacity is value that the rated value in the table minus the weight of all lifting tools (including hooks, slings, and wire ropes winding on the hooks and boom tip).
2. The rated load in the table is the value under the condition that the non-traveling heavy load is lifted slowly and steadily from the solid and flat ground.

LUFFING JIB LOAD CHART

**SCC8260 Luffing Jib Load Chart under LJ Operating Condition
(not including pulley block on the boom tip)**

Boom length 26-62m Jib 21m-63m Rear counterweight 100t Central counterweight 46t Unit: t

Boom length (m)	38												Boom length (m)
Jib length (m)	39						42						Jib length (m)
Boom angle (°) Load radius (m)	88	85	80	75	70	65	88	85	80	75	70	65	Boom angle (°) Load radius (m)
10													10
12													12
14													14
16	52.9						47.6						16
18	52.5						47.2						18
20	50.3	48.6					46.7	46.5					20
22	45.9	44.3					45.3	43.7					22
24	42.2	40.7					41.6	40.1					24
26	39.0	37.5	35.3				38.4	37.1	34.8				26
28	36.2	34.8	32.7				35.6	34.4	32.2				28
30	33.8	32.5	30.4				33.3	32.0	30.1				30
32	31.6	30.3	28.4	26.6			31.1	30.0	28.1				32
34	29.6	28.5	26.7	25.0			29.3	28.1	26.4	24.7			34
36	27.8	26.8	25.1	23.5			27.5	26.5	24.8	23.1			36
38	25.1	25.1	23.7	22.1	20.6		25.9	25.0	23.3	21.8			38
40	22.2	23.5	22.1	20.8	19.4		23.8	23.5	22.1	20.6	19.2		40
42		22.1	20.8	19.5	18.2		21.3	22.0	20.7	19.4	18.1		42
44			19.5	18.3	17.1	15.9	18.6	20.7	19.4	18.2	17.0		44
46			18.4	17.3	16.1	14.9		19.1	18.3	17.1	15.9	14.9	46
48				16.3	15.2	14.1			17.3	16.2	15.0	14.0	48
50					14.3	13.3				15.3	14.2	13.1	50
52					13.5	12.6				14.4	13.4	12.4	52
54						11.9					12.7	11.8	54
56						11.3					12.0	11.2	56
58												10.5	58
60													60
62													62
64													64
66													66
68													68

Notes:

1. The actual hoisting capacity is value that the rated value in the table minus the weight of all lifting tools (including hooks, slings, and wire ropes winding on the hooks and boom tip).
2. The rated load in the table is the value under the condition that the non-traveling heavy load is lifted slowly and steadily from the solid and flat ground.

LUFFING JIB LOAD CHART

**SCC8260 Luffing Jib Load Chart under LJ Operating Condition
(not including pulley block on the boom tip)**

Boom length 26-62m Jib 21m-63m Rear counterweight 100t Central counterweight 46t Unit: t

Boom length (m)	38												Boom length (m)
Jib length (m)	45						48						Jib length (m)
Boom angle (°) Load radius (m)	88	85	80	75	70	65	88	85	80	75	70	65	Boom angle (°) Load radius (m)
10													10
12													12
14													14
16	42.9												16
18	42.5						38.3						18
20	42.0						38.0						20
22	41.6	41.4					37.5	37.4					22
24	41.0	39.4					37.2	36.9					24
26	37.8	36.5					36.7	35.8					26
28	35.1	33.8	31.7				34.6	33.3					28
30	32.7	31.5	29.5				32.2	31.0	29.0				30
32	30.6	29.4	27.5				30.2	29.0	27.1				32
34	28.7	27.6	25.8	24.1			28.3	27.2	25.4				34
36	27.0	26.0	24.3	22.6			26.6	25.6	23.9	22.2			36
38	25.6	24.5	22.9	21.3			25.1	24.1	22.5	20.9			38
40	24.0	23.2	21.6	20.1			23.8	22.8	21.2	19.7			40
42	22.4	21.8	20.4	19.0	17.6		22.4	21.6	20.1	18.6			42
44	20.3	20.5	19.3	17.9	16.7		21.1	20.3	19.0	17.6	16.3		44
46	18.0	19.4	18.1	16.9	15.7		19.2	19.2	17.9	16.7	15.5		46
48		18.2	17.1	15.9	14.8	13.7	17.2	18.1	16.9	15.8	14.6		48
50			16.1	15.0	14.0	12.9	15.1	17.1	15.9	14.9	13.8	12.7	50
52			15.2	14.2	13.1	12.2		15.6	15.1	14.0	13.0	12.0	52
54				13.4	12.5	11.5			14.3	13.3	12.2	11.3	54
56					11.8	10.9				12.6	11.6	10.7	56
58					11.2	10.3				11.9	11.0	10.1	58
60						9.7					10.4	9.5	60
62						9.2						9.1	62
64												8.6	64
66													66
68													68
70													70

Notes:

1. The actual hoisting capacity is value that the rated value in the table minus the weight of all lifting tools (including hooks, slings, and wire ropes winding on the hooks and boom tip).
2. The rated load in the table is the value under the condition that the non-traveling heavy load is lifted slowly and steadily from the solid and flat ground.

LUFFING JIB LOAD CHART

**SCC8260 Luffing Jib Load Chart under LJ Operating Condition
(not including pulley block on the boom tip)**

Boom length 26-62m Jib 21m-63m Rear counterweight 100t Central counterweight 46t Unit: t

Boom length (m)	38												Boom length (m)
Jib length (m)	51						54						Jib length (m)
Boom angle (°) Load radius (m)	88	85	80	75	70	65	88	85	80	75	70	65	Boom angle (°) Load radius (m)
10													10
12													12
14													14
16													16
18	34.7												18
20	34.4						28.7						20
22	34.0	33.8					28.4						22
24	33.6	33.4					28.1	27.9					24
26	33.2	33.0					27.7	27.6					26
28	32.8	32.6					27.5	27.3					28
30	31.7	30.4	28.4				27.3	27.1					30
32	29.6	28.4	26.6				26.9	26.8	25.9				32
34	27.8	26.6	24.8				26.6	26.3	24.5				34
36	26.1	25.1	23.4				25.7	24.8	23.0				36
38	24.7	23.7	22.0	20.4			24.3	23.3	21.7				38
40	23.3	22.3	20.8	19.3			23.0	22.0	20.4	18.9			40
42	22.1	21.2	19.6	18.2			21.7	20.8	19.4	17.9			42
44	20.9	20.1	18.6	17.2	15.8		20.5	19.7	18.3	16.9			44
46	19.7	19.0	17.6	16.3	15.0		18.5	18.7	17.4	16.0	14.8		46
48	18.1	17.9	16.7	15.5	14.2		16.6	17.7	16.5	15.2	14.0		48
50	16.4	16.9	15.8	14.6	13.5		14.7	16.7	15.7	14.4	13.2		50
52	14.6	16.0	14.9	13.8	12.7	11.7	13.1	15.6	14.8	13.7	12.6		52
54		15.0	14.1	13.1	12.1	11.0		13.8	14.0	12.9	11.9	10.9	54
56			13.3	12.3	11.3	10.4			13.2	12.2	11.3	10.3	56
58			12.6	11.7	10.8	9.8			12.5	11.6	10.6	9.7	58
60				11.1	10.2	9.3			11.9	11.0	10.1	9.2	60
62					9.6	8.8				10.4	9.5	8.6	62
64					9.2	8.4				9.9	9.0	8.2	64
66						7.9					8.6	7.7	66
68												7.4	68
70												6.9	70

Notes:

1. The actual hoisting capacity is value that the rated value in the table minus the weight of all lifting tools (including hooks, slings, and wire ropes winding on the hooks and boom tip).
2. The rated load in the table is the value under the condition that the non-traveling heavy load is lifted slowly and steadily from the solid and flat ground.

LUFFING JIB LOAD CHART

SCC8260 Luffing Jib Load Chart under LJ Operating Condition (not including pulley block on the boom tip)

Boom length 26-62m Jib 21m-63m Rear counterweight 100t Central counterweight 46t													Unit: t
Boom length (m)	38												Boom length (m)
Jib length (m)	57						60						Jib length (m)
Boom angle (°) Load radius (m)	88	85	80	75	70	65	88	85	80	75	70	65	Boom angle (°) Load radius (m)
10													10
12													12
14													14
16													16
18													18
20	28.4						26.0						20
22	28.1						25.7						22
24	27.7	27.5					25.4						24
26	27.4	27.2					25.0	24.9					26
28	27.1	26.8					24.7	24.6					28
30	26.7	26.6					24.4	24.2					30
32	26.4	26.3	25.5				24.0	23.9					32
34	26.1	25.8	24.0				23.7	23.6	23.0				34
36	25.3	24.3	22.6				23.4	23.3	22.1				36
38	23.9	22.9	21.2				23.1	22.4	20.8				38
40	22.5	21.6	20.0	18.5			22.1	21.2	19.6				40
42	21.3	20.4	18.9	17.5			21.0	20.0	18.5	17.1			42
44	20.3	19.4	17.9	16.5			19.8	19.0	17.6	16.1			44
46	19.2	18.4	16.9	15.6			18.8	18.0	16.6	15.2			46
48	18.3	17.5	16.1	14.8	13.6		17.9	17.1	15.8	14.4			48
50	17.3	16.6	15.3	14.0	12.9		17.0	16.3	14.9	13.7	12.5		50
52	16.1	15.7	14.6	13.3	12.2		16.2	15.5	14.2	13.1	11.9		52
54	14.8	14.9	13.8	12.7	11.6		15.2	14.7	13.5	12.3	11.3		54
56	13.4	14.0	13.1	12.0	11.0	10.0	14.0	13.9	12.9	11.8	10.7	9.6	56
58	12.0	13.3	12.3	11.3	10.4	9.5	12.7	13.1	12.2	11.2	10.2	9.2	58
60		12.3	11.7	10.7	9.8	8.9	11.4	12.5	11.5	10.5	9.6	8.6	60
62			11.1	10.2	9.3	8.4		11.8	10.9	10.0	9.1	8.2	62
64			10.5	9.6	8.8	7.9		10.4	9.5	8.6	7.7	6.8	64
66				9.2	8.4	7.5		9.8	9.0	8.1	7.3	6.4	66
68					7.9	7.1			8.6	7.7	6.9	6.0	68
70					7.5	6.8			8.1	7.3	6.5	5.6	70
72						6.3				6.9	6.1	5.2	72
74											5.8	4.9	74
76												5.5	76
78													78

Boom length 26-62m Jib 21m-63m Rear counterweight 100t Central counterweight 46t													Unit: t
Boom length (m)	38												Boom length (m)
Jib length (m)	63												Jib length (m)
Boom angle (°) Load radius (m)	88	85	80	75	70	65							Boom angle (°) Load radius (m)
10													10
12													12
14													14
16													16
18													18
20													20
22		23.6											22
24		23.2											24
26		22.9	22.8										26
28		22.6	22.5										28
30		22.2	22.1										30
32		22.0	21.9										32
34		21.6	21.5										34
36		21.3	21.2	20.7									36
38		21.0	20.9	20.3									38
40		20.7	20.6	19.2									40
42		20.4	19.6	18.1									42
44		19.4	18.5	17.1	15.7								44
46		18.5	17.6	16.2	14.9								46
48		17.6	16.7	15.3	14.0								48
50		16.7	15.8	14.6	13.3								50
52		15.8	15.1	13.9	12.6	11.4							52
54		15.1	14.4	13.1	12.0	10.9							54
56		14.2	13.7	12.5	11.4	10.3							56
58		13.1	13.0	12.0	10.8	9.8	8.7						58
60		12.1	12.3	11.3	10.4	9.3	8.3						60
62		10.9	11.7	10.7	9.8	8.8	7.8						62
64		9.7	11.1	10.2	9.3	8.4	7.5						64
66			10.0	9.6	8.7	7.9	7.0						66
68				9.2	8.3	7.5	6.7						68
70					7.8	7.0	6.3						70
72					7.5	6.7	5.9						72
74						6.3	5.6						74
76							5.2						76
78								5.0					78

Notes:

1. The actual hoisting capacity is value that the rated value in the table minus the weight of all lifting tools (including hooks, slings, and wire ropes winding on the hooks and boom tip).
2. The rated load in the table is the value under the condition that the non-traveling heavy load is lifted slowly and steadily from the solid and flat ground.

LUFFING JIB LOAD CHART

**SCC8260 Luffing Jib Load Chart under LJ Operating Condition
(not including pulley block on the boom tip)**

Boom length 26-62m Jib 21m-63m Rear counterweight 100t Central counterweight 46t Unit: t

Boom length (m)	50												Boom length (m)
Jib length (m)	21						24						Jib length (m)
Boom angle (°) Load radius (m)	88	85	80	75	70	65	88	85	80	75	70	65	Boom angle (°) Load radius (m)
10													10
12	72.0						71.5						12
14	72.6	69.3					69.3						14
16	64.4	61.4					63.3	60.3					16
18	57.8	55.0					56.8	54.1					18
20	52.4	49.9	45.9				51.5	49.0					20
22	48.0	45.5	41.9				47.1	44.7	41.1				22
24	44.4	41.9	38.4				43.4	41.2	37.8				24
26		38.9	35.6	32.6			40.3	38.2	34.9				26
28			33.0	30.2				35.6	32.5	29.7			28
30			30.9	28.2					30.3	27.7			30
32				26.4	24.0				28.4	25.9			32
34				24.8	22.6				26.8	24.3	22.1		34
36					21.2					23.0	20.8		36
38					20.0	20.2				21.7	19.6		38
40						18.9					18.5	18.6	40
42						17.7					17.4	17.5	42
44												16.5	44
46												15.4	46
48													48
50													50
52													52
54													54
56													56
58													58
60													60
62													62
64													64
66													66
68													68

Notes:

1. The actual hoisting capacity is value that the rated value in the table minus the weight of all lifting tools (including hooks, slings, and wire ropes winding on the hooks and boom tip).
2. The rated load in the table is the value under the condition that the non-traveling heavy load is lifted slowly and steadily from the solid and flat ground.

LUFFING JIB LOAD CHART

**SCC8260 Luffing Jib Load Chart under LJ Operating Condition
(not including pulley block on the boom tip)**

Boom length 26-62m Jib 21m-63m Rear counterweight 100t Central counterweight 46t Unit: t

Boom length (m)	50												Boom length (m)
Jib length (m)	27						30						Jib length (m)
Boom angle (°) Load radius (m)	88	85	80	75	70	65	88	85	80	75	70	65	Boom angle (°) Load radius (m)
10													10
12	65.3												12
14	63.8						58.6						14
16	62.1	59.2					57.4						16
18	55.8	53.1					55.0	52.4					18
20	50.6	48.2					49.9	47.4					20
22	46.3	44.0					45.6	43.4					22
24	42.6	40.4	37.1				42.0	39.9	36.6				24
26	39.5	37.4	34.3				38.9	36.9	33.8				26
28	36.8	34.8	31.9				36.2	34.4	31.4				28
30	33.3	32.6	29.7	27.1			33.9	32.1	29.3	26.7			30
32		30.6	27.8	25.3			31.9	30.2	27.5	24.9			32
34			26.2	23.8				28.4	25.8	23.4			34
36			24.8	22.4	20.3				24.3	22.1			36
38				21.2	19.1				23.0	20.8	18.8		38
40				20.0	18.0				21.8	19.7	17.7		40
42					17.1	17.0				18.7	16.8		42
44					16.1	16.1				17.6	15.9	15.8	44
46						15.2					15.0	15.0	46
48						14.3					14.1	14.2	48
50												13.4	50
52												12.6	52
54													54
56													56
58													58
60													60
62													62
64													64
66													66
68													68

Notes:

1. The actual hoisting capacity is value that the rated value in the table minus the weight of all lifting tools (including hooks, slings, and wire ropes winding on the hooks and boom tip).
2. The rated load in the table is the value under the condition that the non-traveling heavy load is lifted slowly and steadily from the solid and flat ground.

LUFFING JIB LOAD CHART

**SCC8260 Luffing Jib Load Chart under LJ Operating Condition
(not including pulley block on the boom tip)**

Boom length 26-62m Jib 21m-63m Rear counterweight 100t Central counterweight 46t													Unit: t
Boom length (m)	50												Boom length (m)
Jib length (m)	33						36						Jib length (m)
Boom angle (°) Load radius (m)	88	85	80	75	70	65	88	85	80	75	70	65	Boom angle (°) Load radius (m)
10													10
12													12
14	53.6						48.9						14
16	52.7						48.2						16
18	51.8	51.4					47.5						18
20	49.1	46.6					46.8	45.9					20
22	44.8	42.6					44.1	41.9					22
24	41.2	39.2					40.6	38.5					24
26	38.2	36.3	33.1				37.6	35.6	32.6				26
28	35.6	33.7	30.8				35.0	33.1	30.2				28
30	33.2	31.5	28.7				32.7	31.0	28.2				30
32	31.1	29.5	26.8	24.4			30.6	29.0	26.4				32
34	29.3	27.7	25.2	22.9			28.8	27.3	24.8	22.4			34
36	24.9	26.2	23.8	21.5			27.3	25.7	23.3	21.1			36
38		24.8	22.4	20.3	18.3		24.2	24.3	22.1	19.9			38
40			21.2	19.2	17.3			23.0	20.9	18.8	16.8		40
42			20.3	18.2	16.3				19.8	17.8	15.9		42
44				17.3	15.5				18.8	16.8	15.0		44
46				16.4	14.7	14.5				16.0	14.3		46
48					14.0	13.7				15.3	13.6	13.3	48
50						13.1	13.0			14.4	13.0	12.7	50
52							12.3				12.2	12.0	52
54							11.6				11.5	11.4	54
56												10.8	56
58												10.2	58
60													60
62													62
64													64
66													66
68													68

Notes:

1. The actual hoisting capacity is value that the rated value in the table minus the weight of all lifting tools (including hooks, slings, and wire ropes winding on the hooks and boom tip).
2. The rated load in the table is the value under the condition that the non-traveling heavy load is lifted slowly and steadily from the solid and flat ground.

LUFFING JIB LOAD CHART

**SCC8260 Luffing Jib Load Chart under LJ Operating Condition
(not including pulley block on the boom tip)**

Boom length 26-62m Jib 21m-63m Rear counterweight 100t Central counterweight 46t													Unit: t
Boom length (m)	50												Boom length (m)
Jib length (m)	39						42						Jib length (m)
Boom angle (°) Load radius (m)	88	85	80	75	70	65	88	85	80	75	70	65	Boom angle (°) Load radius (m)
10													10
12													12
14													14
16	44.1						40.3						16
18	43.6						39.9						18
20	42.9	43.6					39.4						20
22	42.4	41.2					39.0	39.3					22
24	40.0	37.9					38.5	37.4					24
26	37.0	35.0					36.5	34.6					26
28	34.4	32.6	29.7				33.9	32.1	29.3				28
30	32.1	30.4	27.6				31.7	30.0	27.3				30
32	30.1	28.4	25.8				29.7	28.1	25.5				32
34	28.3	26.7	24.2				27.9	26.4	23.9				34
36	26.7	25.2	22.9	20.6			26.3	24.8	22.5	20.3			36
38	25.3	23.9	21.5	19.4			24.8	23.5	21.2	19.1			38
40	23.2	22.6	20.3	18.3			23.6	22.2	20.1	18.0			40
42		21.4	19.3	17.3	15.5		22.1	21.1	19.0	17.0			42
44		20.4	18.4	16.4	14.6		19.5	20.1	18.0	16.1	14.3		44
46			17.5	15.6	13.9			19.1	17.1	15.3	13.6		46
48			16.6	14.9	13.1				16.3	14.6	12.9		48
50				14.1	12.5	12.2			15.6	13.9	12.2	11.9	50
52				13.4	11.9	11.6				13.2	11.6	11.3	52
54					11.3	11.0				12.6	11.1	10.7	54
56					10.7	10.4					10.5	10.2	56
58						9.9					10.0	9.7	58
60						9.3					9.5	9.2	60
62												8.7	62
64												8.2	64
66													66
68													68

Notes:

1. The actual hoisting capacity is value that the rated value in the table minus the weight of all lifting tools (including hooks, slings, and wire ropes winding on the hooks and boom tip).
2. The rated load in the table is the value under the condition that the non-traveling heavy load is lifted slowly and steadily from the solid and flat ground.

LUFFING JIB LOAD CHART

**SCC8260 Luffing Jib Load Chart under LJ Operating Condition
(not including pulley block on the boom tip)**

Boom length 26-62m Jib 21m-63m Rear counterweight 100t Central counterweight 46t Unit: t

Boom length (m)	50												Boom length (m)
Jib length (m)	45						48						Jib length (m)
Boom angle (°) Load radius (m)	88	85	80	75	70	65	88	85	80	75	70	65	Boom angle (°) Load radius (m)
10													10
12													12
14													14
16													16
18	36.5						33.3						18
20	36.0						32.9						20
22	35.6	35.8					32.7						22
24	35.3	35.6					32.3	32.4					24
26	34.9	33.9					32.0	32.0					26
28	33.3	31.5					31.6	31.1					28
30	31.1	29.4	26.6				30.6	28.9					30
32	29.2	27.5	24.9				28.7	27.1	24.5				32
34	27.4	25.8	23.4				26.9	25.4	23.0				34
36	25.8	24.3	22.0				25.4	23.9	21.6				36
38	24.4	23.0	20.7	18.5			23.9	22.6	20.3				38
40	23.1	21.8	19.6	17.6			22.7	21.3	19.2	17.1			40
42	22.0	20.6	18.5	16.6			21.5	20.3	18.2	16.2			42
44	20.9	19.6	17.6	15.7			20.4	19.2	17.2	15.3			44
46	18.7	18.6	16.7	14.9	13.1		19.4	18.3	16.3	14.5			46
48		17.8	15.9	14.1	12.4		17.9	17.4	15.6	13.8	12.1		48
50		16.9	15.1	13.4	11.8		15.8	16.7	14.8	13.1	11.4		50
52			14.5	12.8	11.2	10.8		15.9	14.1	12.4	10.9		52
54			13.8	12.2	10.6	10.2			13.5	11.9	10.4	9.8	54
56				11.6	10.2	9.7			12.9	11.3	9.8	9.3	56
58				11.1	9.6	9.2				10.8	9.4	8.9	58
60					9.2	8.8				10.3	8.9	8.4	60
62					8.7	8.3					8.5	8.0	62
64						7.9					8.1	7.6	64
66						7.5						7.2	66
68												6.8	68
70												6.5	70
72													72
74													74

Notes:

- The actual hoisting capacity is value that the rated value in the table minus the weight of all lifting tools (including hooks, slings, and wire ropes winding on the hooks and boom tip).
- The rated load in the table is the value under the condition that the non-traveling heavy load is lifted slowly and steadily from the solid and flat ground.

LUFFING JIB LOAD CHART

**SCC8260 Luffing Jib Load Chart under LJ Operating Condition
(not including pulley block on the boom tip)**

Boom length 26-62m Jib 21m-63m Rear counterweight 100t Central counterweight 46t Unit: t

Boom length (m)	50												Boom length (m)
Jib length (m)	51						54						Jib length (m)
Boom angle (°) Load radius (m)	88	85	80	75	70	65	88	85	80	75	70	65	Boom angle (°) Load radius (m)
10													10
12													12
14													14
16													16
18	30.5												18
20	30.2						25.7						20
22	29.9						25.5						22
24	29.6	29.5					25.2	25.1					24
26	29.3	29.3					24.9	24.8					26
28	29.1	29.0					24.7	24.6					28
30	28.8	28.4					24.4	24.4					30
32	28.2	26.6	23.9				24.1	24.1					32
34	26.5	24.9	22.4				23.9	23.9	22.1				34
36	24.9	23.4	21.1				23.7	23.1	20.8				36
38	23.5	22.1	19.9				23.1	21.8	19.5				38
40	22.2	20.9	18.7	17.2			21.9	20.6	18.5				40
42	21.1	19.8	17.7	16.3			20.8	19.4	17.4	15.4			42
44	20.0	18.8	16.7	15.3			19.7	18.5	16.5	14.6			44
46	19.1	17.8	15.9	14.5			18.7	17.6	15.6	13.8			46
48	18.2	17.0	15.1	13.8	11.6		17.8	16.7	14.9	13.1			48
50	17.0	16.2	14.4	13.1	11.0		17.0	15.9	14.1	12.4	10.7		50
52	15.3	15.5	13.7	12.5	10.4		15.2	15.1	13.4	11.8	10.2		52
54		14.8	13.1	11.8	9.9			14.5	12.8	11.2	9.6		54
56		14.1	12.5	11.3	9.4	8.9		13.9	12.2	10.6	9.2		56
58			12.0	10.7	8.9	8.4		13.2	11.6	10.2	8.6	8.1	58
60			11.3	10.2	8.5	8.0			11.2	9.6	8.3	7.7	60
62				9.8	8.1	7.5			10.7	9.2	7.8	7.3	62
64				9.3	7.7	7.1				8.8	7.5	6.9	64
66					7.3	6.8				8.4	7.1	6.5	66
68					7.0	6.4					6.8	6.2	68
70						6.1					6.4	5.8	70
72						5.8						5.5	72
74												5.2	74

Notes:

- The actual hoisting capacity is value that the rated value in the table minus the weight of all lifting tools (including hooks, slings, and wire ropes winding on the hooks and boom tip).
- The rated load in the table is the value under the condition that the non-traveling heavy load is lifted slowly and steadily from the solid and flat ground.

LUFFING JIB LOAD CHART

SCC8260 Luffing Jib Load Chart under LJ Operating Condition (not including pulley block on the boom tip)

Boom length 26-62m Jib 21m-63m Rear counterweight 100t Central counterweight 46t													Unit: t
Boom length (m)	50												Boom length (m)
Jib length (m)	57						60						Jib length (m)
Boom angle (°) Load radius (m)	88	85	80	75	70	65	88	85	80	75	70	65	Boom angle (°) Load radius (m)
10													10
12													12
14													14
16													16
18													18
20	25.6												20
22	25.3						23.2						22
24	25.0						23.0						24
26	24.8	24.7					22.7	22.7					26
28	24.5	24.4					22.4	22.4					28
30	24.2	24.1					22.2	22.1					30
32	23.9	23.9					22.0	21.9					32
34	23.7	23.6	21.6				21.7	21.6					34
36	23.4	22.7	20.3				21.4	21.3	19.9				36
38	22.8	21.3	19.1				21.2	21.0	18.7				38
40	21.5	20.2	18.0				21.0	19.8	17.6				40
42	20.3	19.1	17.0				20.0	18.7	16.6				42
44	19.3	18.1	16.0	14.1			18.9	17.7	15.7	13.8			44
46	18.4	17.1	15.2	13.3			18.0	16.7	14.9	13.0			46
48	17.5	16.3	14.4	12.6			17.1	15.9	14.0	12.3			48
50	16.7	15.5	13.7	12.0			16.3	15.1	13.3	11.6			50
52	15.8	14.8	13.1	11.3	9.7		15.5	14.4	12.7	11.0			52
54	15.1	14.1	12.4	10.8	9.3		14.9	13.8	12.1	10.4	8.9		54
56	14.0	13.5	11.8	10.3	8.7		8.1	13.1	11.5	9.9	8.4		56
58	12.5	12.9	11.3	9.7	8.3		7.5	12.5	11.0	9.5	7.9		58
60		12.3	10.8	9.3	7.8	7.2	6.8	12.0	10.4	8.9	7.6		60
62			10.3	8.8	7.5	6.8		11.5	10.0	8.6	7.1	6.5	62
64			9.8	8.5	7.1	6.4		11.0	9.5	8.1	6.8	6.1	64
66			9.5	8.0	6.8	6.1			9.1	7.7	6.4	5.7	66
68				7.7	6.4	5.7			8.7	7.4	6.0	5.4	68
70				7.3	6.0	5.4				7.0	5.8	5.1	70
72					5.8	5.1				6.7	5.5	4.8	72
74					5.5	4.8					5.1	4.5	74
76						4.5					4.9	4.2	76
78						4.3						3.9	78
80												3.7	80
82													82
84													84

Boom length 26-62m Jib 21m-63m Rear counterweight 100t Central counterweight 46t													Unit: t
Boom length (m)	50												Boom length (m)
Jib length (m)	63												Jib length (m)
Boom angle (°) Load radius (m)	88	85	80	75	70	65							Boom angle (°) Load radius (m)
10													10
12													12
14													14
16													16
18													18
20													20
22	21.4												22
24	21.2												24
26	20.9												26
28	20.6	20.5											28
30	20.3	20.3											30
32	20.2	20.1											32
34	19.9	19.8											34
36	19.6	19.5											36
38	19.4	19.4	18.3										38
40	19.2	19.1	17.2										40
42	19.0	18.3	16.2										42
44	18.5	17.3	15.3										44
46	17.6	16.4	14.4	12.6									46
48	16.7	15.6	13.7	11.9									48
50	15.9	14.8	13.0	11.3									50
52	15.1	14.0	12.3	10.6									52
54	14.4	13.4	11.7	10.1									54
56	13.8	12.8	11.2	9.5	8.0								56
58	7.0	12.2	10.6	9.0	7.6								58
60	6.3	11.6	10.1	8.6	7.1								60
62	5.8	11.2	9.6	8.1	6.8								62
64	5.3	10.6	9.2	7.7	6.4	5.7							64
66		10.2	8.7	7.4	6.0	5.3							66
68			8.4	7.0	5.7	5.0							68
70			8.0	6.7	5.4	4.7							70
72				6.3	5.0	4.4							72
74				6.0	4.8	4.1							74
76				5.8	4.5	3.8							76
78					4.3	3.5							78
80					4.1	3.3							80
82						3.1							82
84						2.8							84

Notes:

1. The actual hoisting capacity is value that the rated value in the table minus the weight of all lifting tools (including hooks, slings, and wire ropes winding on the hooks and boom tip).
2. The rated load in the table is the value under the condition that the non-traveling heavy load is lifted slowly and steadily from the solid and flat ground.

LUFFING JIB LOAD CHART

**SCC8260 Luffing Jib Load Chart under LJ Operating Condition
(not including pulley block on the boom tip)**

Boom length 26-62m Jib 21m-63m Rear counterweight 100t Central counterweight 46t Unit: t

Boom length (m)	62												Boom length (m)
Jib length (m)	21						24						Jib length (m)
Boom angle (°) Load radius (m)	88	85	80	75	70	65	88	85	80	75	70	65	Boom angle (°) Load radius (m)
10													10
12	57.7						53.9						12
14	55.2						51.8						14
16	52.7	56.3					49.8	53.4					16
18	50.3	50.6					47.7	49.8					18
20	48.2	46.0					45.7	45.2					20
22	45.2	42.1	37.4				43.9	41.4					22
24	41.9	38.9	34.5				41.0	38.2	33.8				24
26		36.1	32.0				38.1	35.4	31.3				26
28		33.8	29.7				33.0	29.2					28
30			27.7	27.1			31.0	27.3					30
32			26.0	25.3			25.6	24.8					32
34				23.8			24.0	23.3					34
36				22.4	17.5		22.7	21.9					36
38				21.2	16.5			20.7	16.0				38
40					15.5			19.6	15.1				40
42					14.7	13.8			14.3				42
44						13.1			13.6	12.7			44
46						12.4			12.9	12.0			46
48						11.7				11.4			48
50										10.8			50
52													52
54													54
56													56
58													58
60													60
62													62
64													64
66													66
68													68

Notes:

- The actual hoisting capacity is value that the rated value in the table minus the weight of all lifting tools (including hooks, slings, and wire ropes winding on the hooks and boom tip).
- The rated load in the table is the value under the condition that the non-traveling heavy load is lifted slowly and steadily from the solid and flat ground.

LUFFING JIB LOAD CHART

**SCC8260 Luffing Jib Load Chart under LJ Operating Condition
(not including pulley block on the boom tip)**

Boom length 26-62m Jib 21m-63m Rear counterweight 100t Central counterweight 46t Unit: t

Boom length (m)	62												Boom length (m)
Jib length (m)	27						30						Jib length (m)
Boom angle (°) Load radius (m)	88	85	80	75	70	65	88	85	80	75	70	65	Boom angle (°) Load radius (m)
10													10
12													12
14	48.6						45.5						14
16	46.9						44.1						16
18	45.2	48.6					42.7	45.4					18
20	43.5	44.4					41.3	43.7					20
22	41.8	40.7					39.9	40.1					22
24	40.2	37.4					38.4	37.0					24
26	37.4	34.7	30.7				36.8	34.3	30.2				26
28	34.8	32.3	28.5				34.3	31.9	28.2				28
30	32.7	30.2	26.6				32.1	29.9	26.3				30
32		28.4	24.9	24.2			30.2	28.0	24.6				32
34			23.5	22.7			26.4	23.1	22.3				34
36			22.1	21.3			25.0	21.8	21.0				36
38				20.1				20.6	19.8				38
40				19.0	14.7			19.5	18.7				40
42				18.0	13.9			18.5	17.7	13.6			42
44				17.1	13.1				16.8	12.9			44
46					12.4	11.5			16.0	12.2			46
48					11.8	10.9				11.5	10.6		48
50						10.3				11.0	10.0		50
52						9.8				10.4	9.5		52
54						9.3					9.0		54
56											8.6		56
58													58
60													60
62													62
64													64
66													66
68													68

Notes:

- The actual hoisting capacity is value that the rated value in the table minus the weight of all lifting tools (including hooks, slings, and wire ropes winding on the hooks and boom tip).
- The rated load in the table is the value under the condition that the non-traveling heavy load is lifted slowly and steadily from the solid and flat ground.

LUFFING JIB LOAD CHART

**SCC8260 Luffing Jib Load Chart under LJ Operating Condition
(not including pulley block on the boom tip)**

Boom length 26-62m Jib 21m-63m Rear counterweight 100t Central counterweight 46t Unit: t

Boom length (m)	62												Boom length (m)
Jib length (m)	33						36						Jib length (m)
Boom angle (°) Load radius (m)	88	85	80	75	70	65	88	85	80	75	70	65	Boom angle (°) Load radius (m)
10													10
12													12
14	42.3												14
16	41.2						38.7						16
18	40.1						37.8						18
20	39.0	41.4					36.9	38.5					20
22	37.9	39.3					36.0	37.9					22
24	36.7	36.3					35.0	35.6					24
26	35.7	33.6					34.0	33.0					26
28	33.7	31.3	27.5				33.0	30.8	27.0				28
30	31.5	29.3	25.7				31.0	28.7	25.2				30
32	29.6	27.5	24.0				29.1	26.9	23.6				32
34	27.9	25.8	22.6				27.4	25.4	22.1				34
36	26.2	24.4	21.2	20.4			25.9	23.9	20.9	20.0			36
38		23.1	20.1	19.2			24.6	22.7	19.7	18.8			38
40			19.0	18.2			21.5	18.6	17.7				40
42			18.1	17.2			20.4	17.6	16.8				42
44			17.2	16.3	12.3			16.7	15.9	12.0			44
46				15.5	11.7			15.9	15.1	11.3			46
48				14.7	11.1				14.3	10.7			48
50				14.0	10.5	9.5			13.6	10.2			50
52					10.0	9.0			13.0	9.6	8.6		52
54					9.5	8.5				9.2	8.2		54
56						8.1				8.7	7.7		56
58						7.7				8.3	7.3		58
60						7.3					6.9		60
62											6.6		62
64													64
66													66
68													68

Notes:

1. The actual hoisting capacity is value that the rated value in the table minus the weight of all lifting tools (including hooks, slings, and wire ropes winding on the hooks and boom tip).
2. The rated load in the table is the value under the condition that the non-traveling heavy load is lifted slowly and steadily from the solid and flat ground.

LUFFING JIB LOAD CHART

**SCC8260 Luffing Jib Load Chart under LJ Operating Condition
(not including pulley block on the boom tip)**

Boom length 26-62m Jib 21m-63m Rear counterweight 100t Central counterweight 46t Unit: t

Boom length (m)	62												Boom length (m)
Jib length (m)	39						42						Jib length (m)
Boom angle (°) Load radius (m)	88	85	80	75	70	65	88	85	80	75	70	65	Boom angle (°) Load radius (m)
10													10
12													12
14													14
16	36.0						33.4						16
18	35.3						32.9						18
20	34.6						32.3						20
22	33.8	35.2					31.8	32.7					22
24	33.1	34.7					31.1	32.2					24
26	32.3	32.4					30.5	31.8					26
28	31.5	30.2					29.9	29.8					28
30	30.4	28.2	24.7				29.3	27.8					30
32	28.5	26.5	23.0				28.2	26.0	22.7				32
34	26.9	24.8	21.6				26.5	24.5	21.3				34
36	25.4	23.4	20.3				25.0	23.0	20.1				36
38	24.0	22.1	19.2	18.2			23.7	21.8	18.9				38
40	22.8	21.0	18.2	17.2			22.4	20.6	17.8	16.9			40
42	20.9	19.9	17.2	16.2			18.4	19.6	16.9	15.9			42
44		19.0	16.3	15.4			16.7	18.6	16.0	15.1			44
46			15.5	14.6	10.9			17.7	15.2	14.3			46
48			14.8	13.8	10.3			17.0	14.5	13.5	10.0		48
50			14.1	13.2	9.7				13.8	12.9	9.5		50
52				12.5	9.3				13.2	12.2	9.0		52
54				11.9	8.7	7.7				11.7	8.6		54
56				11.4	8.3	7.2				11.1	8.1	7.0	56
58					7.9	6.8				10.6	7.7	6.6	58
60					7.6	6.5					7.3	6.2	60
62						6.1					6.9	5.9	62
64							5.8				6.6	5.5	64
66								5.5				5.2	66
68												4.9	68

Notes:

1. The actual hoisting capacity is value that the rated value in the table minus the weight of all lifting tools (including hooks, slings, and wire ropes winding on the hooks and boom tip).
2. The rated load in the table is the value under the condition that the non-traveling heavy load is lifted slowly and steadily from the solid and flat ground.

LUFFING JIB LOAD CHART

SCC8260 Luffing Jib Load Chart under LJ Operating Condition (not including pulley block on the boom tip)

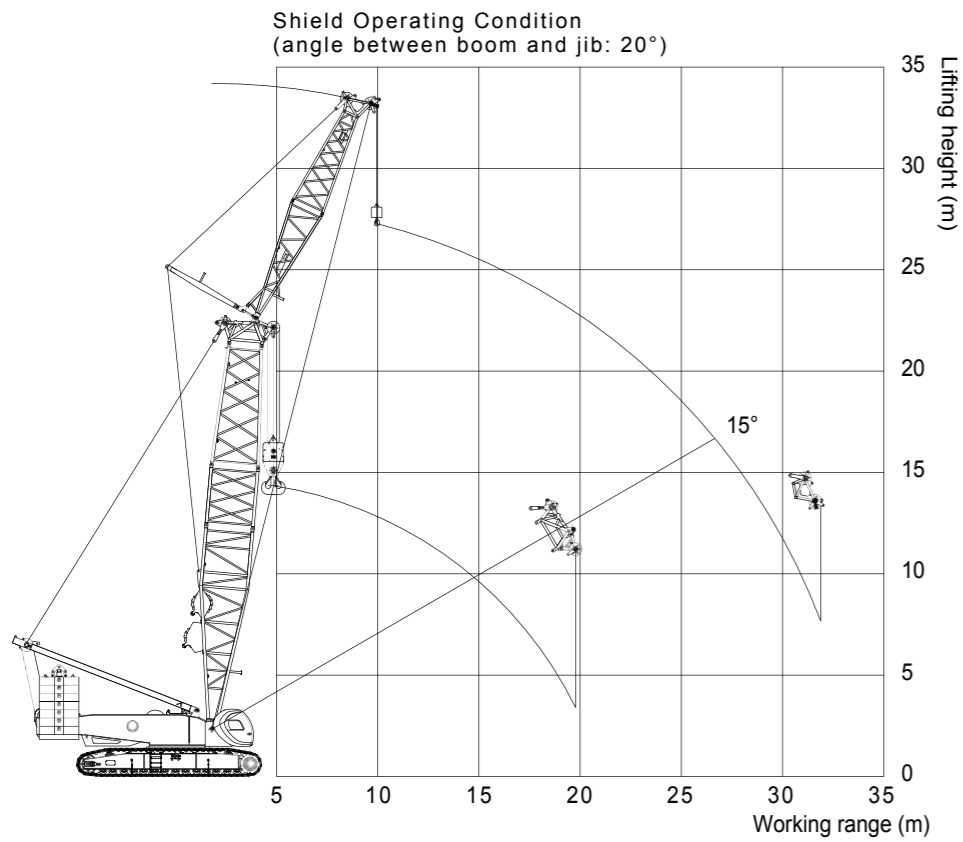
Boom length 26-62m Jib 21m-63m Rear counterweight 100t Central counterweight 46t													Unit: t
Boom length (m)	62												Boom length (m)
Jib length (m)	57						60						Jib length (m)
Boom angle (°) Load radius (m)	88	85	80	75	70	65	88	85	80	75	70	65	Boom angle (°) Load radius (m)
10													10
12													12
14													14
16													16
18													18
20	22.4												20
22	22.1						20.5						22
24	21.9						20.3						24
26	21.6	21.7					20.1						26
28	21.3	21.5					19.8	19.9					28
30	21.1	21.2					19.6	19.7					30
32	20.9	21.1					19.4	19.4					32
34	20.6	20.9					19.2	19.3					34
36	20.3	20.6	17.8				18.9	19.1					36
38	20.2	19.7	16.7				18.7	18.9	16.4				38
40	19.9	18.6	15.8				18.5	18.3	15.4				40
42	19.3	17.6	14.9				18.4	17.3	14.5				42
44	18.3	16.7	14.0				17.9	16.3	13.7				44
46	17.4	15.8	13.3	12.1			17.0	15.5	13.0				46
48	16.6	15.0	12.6	11.4			16.2	14.7	12.2	11.0			48
50	15.7	14.3	12.0	10.8			15.4	14.0	11.6	10.4			50
52	14.6	13.6	11.3	10.2			14.5	13.3	11.0	9.8			52
54	9.4	13.0	10.8	9.7			13.5	12.7	10.4	9.3			54
56	8.6	12.4	10.3	9.1	6.3		8.2	12.1	9.9	8.8			56
58	7.9	11.9	9.8	8.7	5.9		7.5	11.5	9.5	8.3	5.6		58
60		11.3	9.3	8.2	5.5		6.8	11.0	9.0	7.8	5.2		60
62		10.9	8.9	7.8	5.2			10.5	8.6	7.4	4.9		62
64			8.5	7.4	4.9			10.1	8.2	7.0	4.6		64
66			8.1	7.0	4.6	3.3			7.7	6.6	4.2		66
68			7.7	6.6	4.3	3.0			7.4	6.3	4.0	2.7	68
70				6.3	4.1	2.8			7.1	5.9	3.7	2.4	70
72				6.0	3.8	2.5				5.6	3.5	2.2	72
74					3.5	2.3				5.3	3.2	2.0	74
76					3.3	2.1				5.0	3.0	1.7	76
78					3.1	1.9					2.8	1.5	78
80						1.7					2.6	1.3	80
82						1.5						1.1	82
84													84
86													86
88													88

Boom length 26-62m Jib 21m-63m Rear counterweight 100t Central counterweight 46t													Unit: t
Boom length (m)	62												Boom length (m)
Jib length (m)	63						60						Jib length (m)
Boom angle (°) Load radius (m)	88	85	80	75	70	65	88	85	80	75	70	65	Boom angle (°) Load radius (m)
10													10
12													12
14													14
16													16
18													18
20													20
22	19.1												22
24	18.8												24
26	18.6												26
28	18.4	18.4											28
30	18.2	18.2											30
32	18.0	18.0											32
34	17.7	17.8											34
36	17.6	17.6											36
38	17.4	17.5											38
40	17.2	17.3	14.9										40
42	17.0	16.8	14.1										42
44	16.8	15.9	13.3										44
46	16.7	15.1	12.5										46
48	15.8	14.3	11.9										48
50	15.0	13.6	11.3	9.9									50
52	14.3	12.9	10.6	9.4									52
54	13.4	12.3	10.1	8.8									54
56	12.7	11.7	9.5	8.3									56
58	11.8	11.2	9.1	7.9									58
60	6.3	10.6	8.6	7.4	4.8								60
62	5.9	10.2	8.2	7.0	4.5								62
64	5.3	9.7	7.8	6.6	4.1								64
66		9.3	7.4	6.2	3.9								66
68		8.9	7.0	5.9	3.6	2.2							68
70			6.8	5.5	3.3	2.0							70
72				5.2	3.1	1.8							72
74				4.9	2.9	1.5							74
76				4.6	2.6	1.3							76
78				4.4	2.4	1.1							78
80					2.3								80
82					2.1								82
84					1.8								84
86													86
88													88

Notes:

1. The actual hoisting capacity is value that the rated value in the table minus the weight of all lifting tools (including hooks, slings, and wire ropes winding on the hooks and boom tip).
2. The rated load in the table is the value under the condition that the non-traveling heavy load is lifted slowly and steadily from the solid and flat ground.

LOAD CHART OF SHIELD OPERATING CONDITION



LOAD CHART OF SHIELD OPERATING CONDITION

SCC8260 Crawler Crane Shield Operating Condition

- 1) Angle between boom and jib is 20° ;
2) Rear counterweight 100t Central counterweight 46t

Range	Main hook load value (auxiliary hook emptied)	Auxiliary hook load value (main hook emptied)
5	249	
6	227	
7	190	
8	174	
9	150	
10	140	96
12	106	88
14	82	74
16	66	62.8
18	52.5	53.4
20	19/49	46.2
22		40.4
24		35.8
26		31.9
28		28.6
30		25.8

Notes:

1. The actual hoisting capacity is a value that the rated value in the table minus the weight of all lifting tools (including hooks, slings, and wire ropes winding on the hooks and boom tip).
2. The rated load in the table is the value under the condition that the non-traveling heavy load is lifted slowly and steadily from the solid and flat ground.



Quality Changes the World

SANY GROUP CO., LTD.

Address: SANY Industrial Park, Economic and Technological
Development Zone, Changsha, Hunan, China

Service Hotline: +0086-4006-098-318

E-mail: crd@sany.com.cn

For more information, please visit: www.sanygroup.com

