

# TRUCK CRANE

# QY70V<sub>532</sub>



**ZOOMLION**

Zoomlion Heavy Industry Science & Technology Co.,Ltd.

Add:Zoomlion Overseas Building, No.613, 3rd Section, Furong Middle Road, Yuhua District, Changsha, Hunan, P.R.China 410205

Copyright © 2015 Zoomlion. All rights reserved. Reproduction and copying of any part of the Contents is not allowed for any purposes without Zoomlion's written approval.  
Note: No product coating appearance shall be subject to sample.



Printed in China. VN : EN-MC-201509-01

**ZOOMLION**

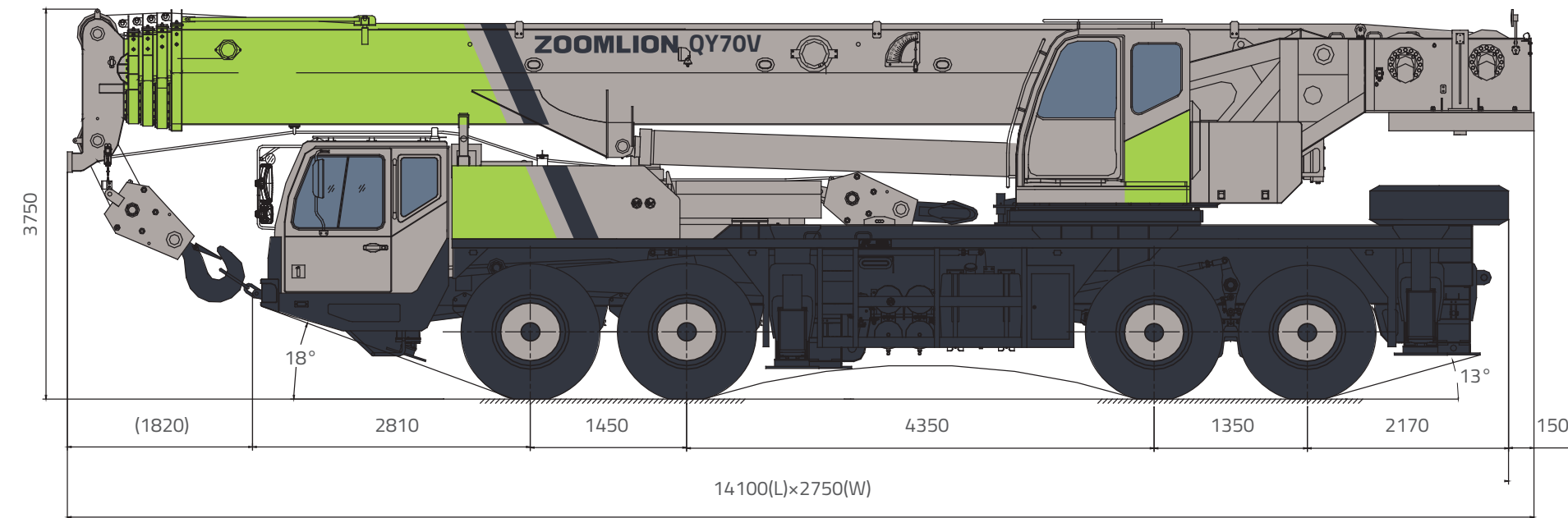
[en.zoomlion.com](http://en.zoomlion.com)

## Features

### Lifting capacity

1. Continuously overall promotion makes our lifting capacity of crane be improved once and once again
2. 43 m main boom , two section jibs (9.5m . 16m)
3. Optimized central slewing position increases the lifting capacity of the crane over rear
4. Large outrigger span improves the working stability of the crane greatly
5. Adopt internationally advanced structure analysis and calculation methods to develop the lifting capacity of crane deeply
6. Leading boom manufacturing process in trade.

## Overall View

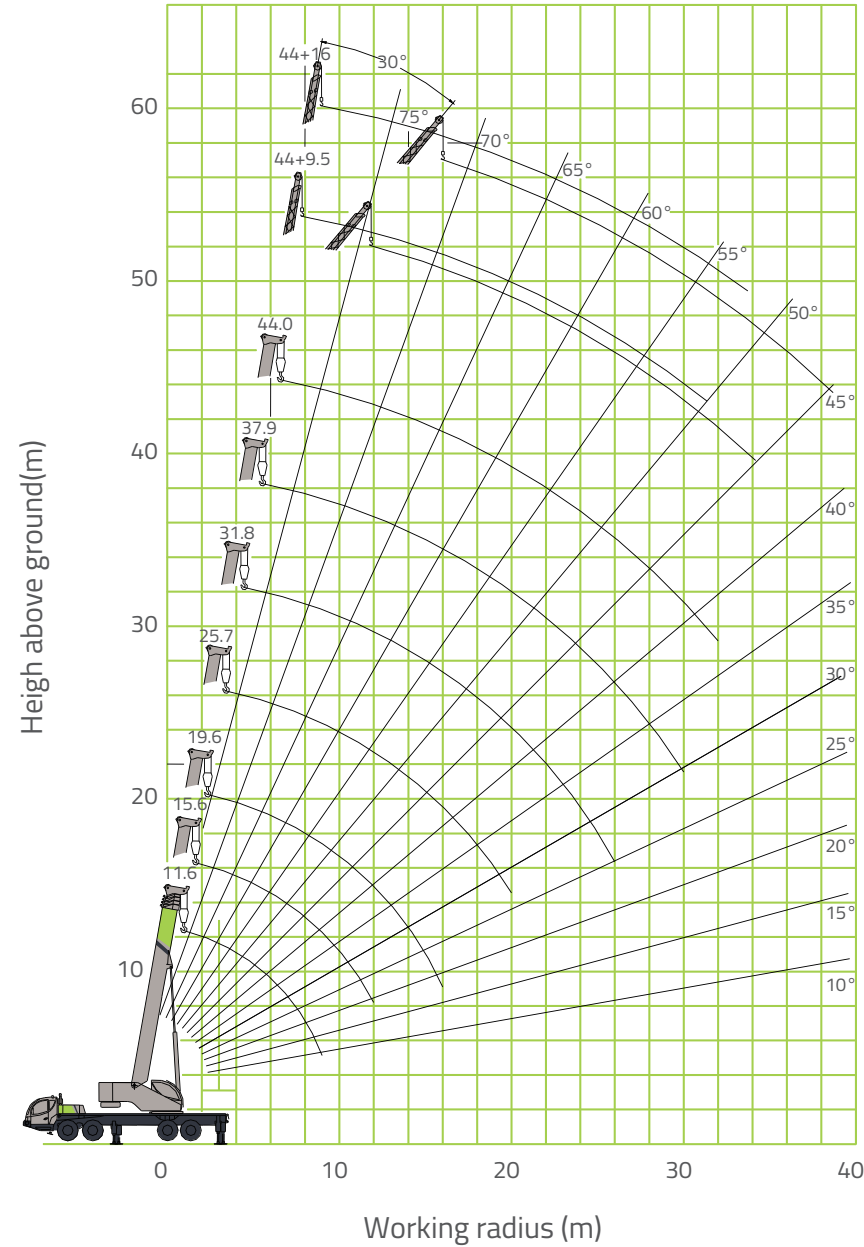


(Unit: Metric mm)

## Technical Data

	Items	Unit	Values	Remarks
Working performance	Max. rated lifting capacity	kg	70000	
	Max. load moment of basic boom	kN.m	2352	
	Max. load moment of Max. length boom	kN.m	1098	
	Max. lifting height of basic boom	m	12.2	
	Max. lifting height of boom	m	44.2	The specifications do not include deflection of boom and jib.
	Max. lifting height of jib	m	60.2	
Working speeds	Max. hoist rope speed (Main winch)	m/min	≥135	Drum 4 <sup>th</sup> layer
	Max. hoist rope speed (Auxiliary winch)	m/min	≥110	Drum 2 <sup>nd</sup> layer
	Boom derricking up time	s	57	
	Boom extending time	s	107	
	Slewing speed	r/min	1.8	
Driving parameters	Max. driving speed	km/h	75	
	Max. gradeability	%	37	
	Min. turning diameter	m	24	
	Min. ground clearance	mm	280	
	Oil consumption per hundred kilometers	L	46	
Mass	Deadweight in driving condition	kg	45000	
	Complete vehicle kerb mass	kg	44870	
	Axle load (Front)	kg	19000	
	Axle load (Rear)	kg	26000	
	Dimensions	Overall dimensions (L x W x H)	mm	14100x2750x3750
Longitudinal distance between outriggers		m	6.00	
Transversal distance between outriggers		m	Fully extended 7.60 Half-extended 5.04	
Slewing radius		mm	4020	
Boom length		m	11.6~44.0	
Boom angle		°	-2~80	
Jib length		m	9.5, 16	
Offset		°	0, 30	

# Lifting Height Chart



# Rated Lifting Capacity Tables

This crane is provided with 13 sheets of rated lifting capacity tables. The operator should select proper rated lifting capacity referring to resp. Lifting capacity tables according to actual working conditions. For details, please refer to Table 1 to Table 13. The values in column "I" refer to the extendable length of telescoping cylinder I. The values in column "II" refer to 3 times extendable length of telescoping cylinder II, namely, the total extendable length of boom section 3, 4 and 5.

Table 1 Unit: Metric kg

Working radius (m)	Boom(m)						
	Outriggers fully extended, over side and over rear Telescopic cylinder I fully extended						
	11.6	15.6	19.6	25.7	31.8	37.9	44.0
3.0	70000	50000	40000				
3.5	64000	50000	40000				
4.0	56000	48000	40000	28000			
4.5	52000	44000	40000	28000			
5.0	48000	43000	38500	27000			
5.5	43000	39000	36000	26000	18000		
6.0	39000	37000	34000	25000	18000		
6.5	35000	33000	31500	24000	18000		
7.0	30000	28700	28700	23000	18000	14100	
7.5	26500	25000	25000	22000	18000	14100	
8.0	23500	22500	22500	21000	17500	14100	
9.0	18200	18200	18200	18500	16000	14100	10000
10.0		14700	14700	15300	14500	13300	10000
11.0		12200	12200	12700	13000	12000	9500
12.0		10000	10200	11000	11500	11300	9200
14.0			7100	8200	8800	9300	8200
16.0			5300	6000	6700	7200	7300
18.0				4700	5200	5500	5900
20.0				3500	4000	4300	4600
22.0					3100	3450	3800
24.0					2300	2750	3050
26.0					1700	2100	2450
28.0						1600	1950
30.0						1200	1500
32.0							1200
I	0	4.0	8.0	8.0	8.0	8.0	8.0
II	0	0	0	6.1	12.2	18.3	24.4
Reeving	12	9	9	5	5	3	3
Hook	70 t main hook						

Table 2 Unit: Metric kg

Working radius (m)	Boom(m)										
	Outriggers fully extended, over side and over rear Telescopic cylinder I intermediately extended						Outriggers fully extended, over side and over rear Telescopic cylinder I fully retracted				
	11.6	15.6	21.7	27.8	33.9	40.0	11.6	17.7	23.8	29.9	36.0
3.0	70000	50000					70000	28000			
3.5	64000	50000	28000				64000	28000			
4.0	56000	48000	28000				56000	28000	17800		
4.5	52000	44000	28000				52000	28000	17600		
5.0	48000	43000	27000	18000			48000	27000	17400	14000	
5.5	43000	39000	26000	18000			43000	26000	17200	14000	
6.0	39000	37000	25000	18000			39000	25000	17000	14000	
6.5	35000	33000	24000	18000	14000		35000	24000	16800	14000	
7.0	30000	28700	23000	17500	14000		30000	23000	16500	14000	9000
7.5	26500	25000	22000	17000	14000		26500	22000	16000	14000	9000
8.0	23500	22500	21000	16500	14000	9500	23500	21000	15500	13000	9000
9.0	18200	18200	19100	16000	14000	9000	18200	19800	15000	12100	8800
10.0		14700	15600	14500	13000	8500		16300	14500	11300	8600
11.0		12200	13000	13800	12000	8000		13700	14000	10500	8300
12.0		10000	11000	11700	11000	7700		11700	12400	9700	8000
14.0			8200	8800	9300	7200		9400	8600	7500	
16.0			6100	6700	7200	6800		7400	7600	6800	
18.0				5200	5700	6000			6000	6000	
20.0				4100	4500	4800			4900	5200	
22.0				3200	3700	3900			4100	4300	
24.0					2900	3200				3600	
26.0					2300	2600				3000	
28.0					1800	2100				2500	
30.0						1600					
32.0						1300					
I	0	4.0	4.0	4.0	4.0	4.0	0	0	0	0	0
II	0	0	6.1	12.2	18.3	24.4	0	6.1	12.2	18.3	24.4
Reeving	12	9	5	5	3	3	12	5	5	3	3
Hook	70 t main hook										

Table 3

Unit: Metric kg

Working radius (m)	Boom(m)												
	Outriggers intermediately extended, over side and over rear Telescopic cylinder I fully extended							Outriggers intermediately extended, over side and over rear Telescopic cylinder I intermediately extended					
	11.6	15.6	19.6	25.7	31.8	37.9	44.0	11.6	15.6	21.7	27.8	33.9	40.0
3.0			40000					60000	50000				
3.5	50000	45000	40000					50000		28000			
4.0	40000	40000	40000	28000				40000	40000	28000			
4.5	35000	35000	35000	28000				35000	35000	28000			
5.0	32800	32000	31500	27000				32800	32000	27000	18000		
5.5	26500	25700	25200	26000	18000			26500	25700	26000	18000		
6.0	21900	21200	20800	22200	18000			21900	21200	22900	18000		
6.5	18500	17800	17500	18800	18000			18500	17800	19400	17500	14000	
7.0	15800	15200	14900	16200	17000	14000		15800	15200	16700	17000	14000	
7.5	13700	13100	12800	14000	14800	14000		13700	13100	14600	15400	14000	
8.0	12000	11400	11100	12300	13000	13500		12000	11400	12800	13600	13500	9500
9.0	9300	8800	8500	9700	10400	10900	10000	9300	8800	10200	10800	11300	9000
10.0		6900	6600	7700	8400	8800	9200		6900	8200	8800	9300	8500
11.0		5400	5100	6200	6800	7200	7600		5400	6700	7300	7700	8100
12.0		4200	4000	5000	5600	6000	6400		4200	5500	6100	6500	6800
14.0			2300	3300	3900	4300	4600			3700	4300	4700	5000
16.0				2000	2600	3000	3300				3000	3400	3700
18.0					1700	2100	2300					2500	2800
20.0					1000	1400	1600					1800	2000
22.0						900	1100						1400
I	0	4.0	8.0	8.0	8.0	8.0	8.0	0	4.0	4.0	4.0	4.0	4.0
II	0	0	0	6.1	12.2	18.3	24.4	0	0	6.1	12.2	18.3	24.4
Reeving	12	9	9	5	5	3	3	12	9	5	5	3	3
Hook	70t main hook												

Table 4

Unit: Metric kg

Working radius (m)	Boom(m)					Boom angle (°)	Boom+Fly jib (m)			
	Outriggers intermediately extended, over side and over rear Telescopic cylinder I fully retracted						Support leg fully extended, sidewise and rearside operations			
	11.6	17.7	23.8	29.9	36.0		44.0+9.5		44.0+16.0	
3.0	60000	28000				0°	30°	0°	30°	
3.5	50000	28000								
4.0	40000	28000	17800			80°	5000	3000	3000	1300
4.5	35000	28000	17600			78°	4700	2850	2700	1200
5.0	32800	27000	17400	14000		76°	4400	2600	2400	1150
5.5	26500	26000	17200	14000		74°	4100	2450	2100	1100
6.0	21900	23800	17000	14000		72°	3800	2300	1850	1050
6.5	18500	20200	16800	14000		70°	3500	2200	1700	1000
7.0	15800	17500	16500	14000	9000	68°	3200	2100	1600	970
7.5	13700	15300	16000	14000	9000	66°	2800	2000	1500	940
8.0	12000	13500	14200	13000	9000	64°	2400	1900	1400	910
9.0	9300	10800	11400	11800	8800	62°	2100	1800	1300	880
10.0		8800	9400	9800	8600	60°	1850	1650	1200	850
11.0		7200	7800	8200	8300	58°	1600	1350	1100	800
12.0		6000	6600	7000	7200	56°	1300	1150	1000	750
14.0			4800	5100	5300	54°	1000	900	800	
16.0			3500	3800	4000	52°	800			
18.0				2900	3100	Reeving	1			
20.0				2200	2400	Hook	5 t auxiliary hook			
22.0				1600	1800					
24.0					1300					
I	0	0	0	0	0					
II	0	6.1	12.2	18.3	24.4					
Reeving	12	5	5	3	3					
Hook	70 t main hook									



Table 5 Unit: Metric kg

Working radius (m)	Boom(m)						
	Outriggers fully extended, over side and over rear, with 2 t movable counterweight Telescopic cylinder I fully extended						
	11.6	15.6	19.6	25.7	31.8	37.9	44.0
3.0	70000	50000	40000				
3.5	64000	50000	40000				
4.0	56000	48000	40000	28000			
4.5	52000	44000	40000	28000			
5.0	48000	43000	39000	27600			
5.5	43000	39000	36000	26000	18000		
6.0	39000	37000	34200	25500	18000		
6.5	35000	33000	31500	24000	18000		
7.0	30000	29500	29000	23500	18000	14000	
7.5	26500	25000	25000	22500	18000	14000	
8.0	24000	23400	23300	21500	17500	14000	
9.0	18900	18700	18500	19100	16000	14000	10000
10.0		15200	15100	16300	14500	13300	10000
11.0		12200	12200	13200	13000	12000	9600
12.0		10500	10400	11500	12200	11300	9400
14.0			7400	8500	9200	9600	8300
16.0			5300	6400	7100	7400	7500
18.0				4800	5500	6000	6100
20.0				3650	4300	4800	4900
22.0					3350	3800	3900
24.0					2650	3100	3250
26.0					2000	2400	2700
28.0						1900	2150
30.0						1450	1700
32.0							1350
I	0	4.0	8.0	8.0	8.0	8.0	8.0
II	0	0	0	6.1	12.2	18.3	24.4
Reeving	12	9	9	5	5	3	3
Hook	70t main hook						

Table 6 Unit: Metric kg

Working radius (m)	Boom(m)													
	Outriggers fully extended, over side and over rear, with 2 t movable counterweight Telescopic cylinder I intermediately extended							Outriggers fully extended, over side and over rear, with 2 t movable counterweight Telescopic cylinder I fully retracted						
	11.6	15.6	21.7	27.8	33.9	40.0	11.6	17.7	23.8	29.9	36.0			
3.0	70000	50000					70000	28000						
3.5	64000	50000	28000				64000	28000						
4.0	56000	48000	28000				56000	28000	17800					
4.5	52000	44000	28000				52000	28000	17600					
5.0	48000	43000	27000	18000			48000	27000	17400	14000				
5.5	43000	39000	26000	18000			43000	26000	17200	14000				
6.0	39000	37000	25000	18000			39000	25000	17000	14000				
6.5	35000	33000	24000	18000	14000		35000	24000	16800	14000				
7.0	30000	29500	23000	17500	14000		30000	23000	16500	14000	9000			
7.5	26500	25000	22000	17000	14000		26500	22000	16000	14000	9000			
8.0	24000	23400	21000	16500	14000	9500	24000	21000	15500	13000	9000			
9.0	18900	18700	19500	16000	14000	9000	18900	20000	15000	12100	8800			
10.0		15200	16500	14500	13000	8500		17000	14500	11300	8600			
11.0		12200	13300	13800	12000	8000		13800	14000	10500	8300			
12.0		10500	11600	12300	11000	7700		12000	13000	9700	8000			
14.0			8600	9300	9300	7300			10000	8600	7500			
16.0			6500	7200	7600	6900			7900	7600	6800			
18.0				5600	6200	6200				6500	6000			
20.0				4400	5000	5000				5400	5200			
22.0				3450	4000	4100				4400	4400			
24.0					3300	3300					3700			
26.0					2650	2800					3200			
28.0					2100	2250					2650			
30.0						1800								
32.0						1450								
I	0	4.0	4.0	4.0	4.0	4.0	0	0	0	0	0			
II	0	0	6.1	12.2	18.3	24.4	0	6.1	12.2	18.3	24.4			
Reeving	12	9	5	5	3	3	12	5	5	3	3			
Hook	70t main hook													

Table 7 Unit: Metric kg

Working radius (m)	Boom(m)													
	Outriggers intermediately extended, over side and over rear, with 2 t movable counterweight Telescopic cylinder I fully extended							Outriggers intermediately extended, over side and over rear, with 2 t movable counterweight Telescopic cylinder I intermediately extended						
	11.6	15.6	19.6	25.7	31.8	37.9	44.0	11.6	15.6	21.7	27.8	33.9	40.0	
3.0			40000					60000	50000					
3.5	50000	45000	40000					50000		28000				
4.0	40000	40000	40000	28000				40000	40000	28000				
4.5	35000	35000	35000	28000				35000	35000	28000				
5.0	32800	32000	31500	27000				32800	32000	27000	18000			
5.5	26500	25700	25200	26000	18000			26500	25700	26000	18000			
6.0	21900	21200	20800	22200	18000			21900	21200	22900	18000			
6.5	18500	17800	17500	18800	18000			18500	17800	19400	17500	14000		
7.0	17000	15200	14900	16200	17000	14000		17000	15200	16700	17000	14000		
7.5	14000	13100	12800	14000	14800	14000		14000	13100	14600	15400	14000		
8.0	13000	12700	12300	13500	13000	13500		13000	12700	13800	13600	13500	9500	
9.0	10000	9900	9700	10800	10400	12000	10000	10000	9900	11200	10800	12300	9000	
10.0		7900	7600	8700	9500	9900	9200		7900	9200	9800	10000	8500	
11.0		5900	5800	6800	7400	8000	7600		5900	7500	8100	8500	8100	
12.0		5000	4800	5900	6500	7000	7300		5000	6300	6900	7300	7600	
14.0			3000	4000	4700	5100	5400			4300	4900	5300	5600	
16.0				2600	3400	3800	4100				3500	3900	4500	
18.0					2400	2800	3100					3000	3300	
20.0					1700	2100	2300					2200	2400	
22.0						1500	1700						1800	
I	0	4.0	8.0	8.0	8.0	8.0	8.0	0	4.0	4.0	4.0	4.0	4.0	
II	0	0	0	6.1	12.2	18.3	24.4	0	0	6.1	12.2	18.3	24.4	
Reeving	12	9	9	5	5	3	3	12	9	5	5	3	3	
Hook	70t main hook													

Table 8 Unit: Metric kg

Working radius (m)	Boom(m)				
	Outriggers intermediately extended, over side and over rear, with 2 t movable counterweight Telescopic cylinder I fully retracted				
	11.6	17.7	23.8	29.9	36.0
3.0	60000	28000			
3.5	50000	28000			
4.0	40000	28000	17800		
4.5	35000	28000	17600		
5.0	32800	27000	17400	14000	
5.5	26500	26000	17200	14000	
6.0	21900	23800	17000	14000	
6.5	18500	20200	16800	14000	
7.0	17000	17500	16500	14000	9000
7.5	14000	15300	16000	14000	9000
8.0	13000	14500	14200	13000	9000
9.0	10000	11800	11400	12000	8800
10.0		9800	10400	10500	8600
11.0		8000	8800	8800	8300
12.0		6800	7400	7800	8000
14.0			5400	5700	5900
16.0			4000	4300	4500
18.0				3400	3600
20.0				2600	2800
22.0				2000	2200
24.0					1700
I	0	0	0	0	0
II	0	6.1	12.2	18.3	24.4
Reeving	12	5	5	3	3
Hook	70t main hook				