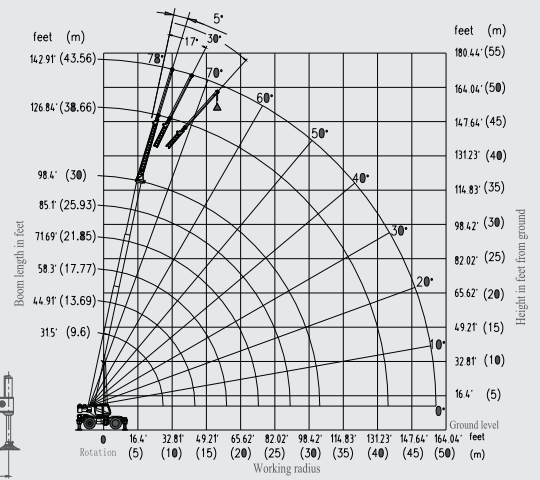
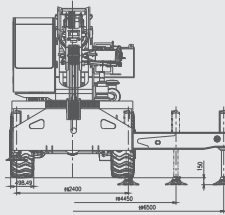
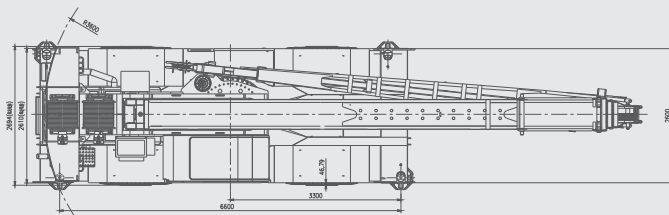
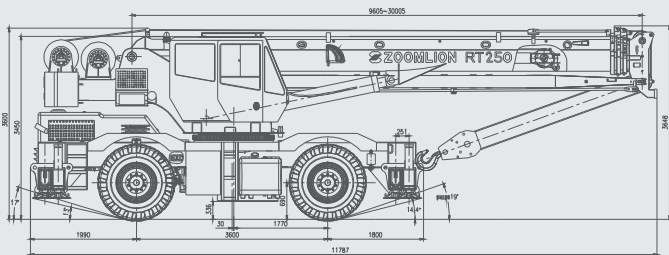


RT25

ROUGH TERRAIN CRANE



The Power of China, The legend of world.



RT25 ROUGH TERRAIN CRANE

Specification			
Maximum rated lifting capacity	9.6 m boom	25000 kg at 3 m	
	13.7 m boom	17000 kg at 3 m	
	17.8 m boom	16000kg at 3.5 m	
	21.8 m boom	11500 kg at 4 m	
	25.9 m boom	8500 kg at 4.5 m	
	30 m boom	7000 kg at 5 m	
Working performance	Max. rated lifting capacity × working radius	kg.m	25000×3.0
	Max. load moment of basic boom	kN.m	980
	Max. load moment of max. length main boom	kN.m	549
	Max. lifting height of max. length main boom	m	31
	Max. lifting height of jib	m	44.8
Dimensions	Overall dimensions (L × W × H)	mm	11790×2610 (2694)×3600
	Distance between outriggers (Longitudinal × transversal)	mm	6600×6500
	Main boom length (Completely retracted – completely extended)	mm	9605 – 30005
	Jib length (Completely retracted – completely extended)	mm	8650 – 13550
	Boom angle	°	-1 – 80
	Swing range		360°unlimited swing (Full range)
	Working speeds	Max. hoist rope speed (Main winch)	m/min
Min. boom telescoping out time		s	60
Min. boom telescoping in time		s	60
Min. boom derricking up time		s	46
Min. boom derricking down time		s	50
Swing speed		r/min	0–2.2
Hydraulic system	Rated working pressure	MPa	25
	Rated working oil flow	L/min	400
	Hydraulic oil tank capacity	L	600
Mass	Complete vehicle kerb mass	kg	28850
	Front axle load	kg	14100
	Rear axle load	kg	14750
Driving	Max. driving speed (Forwards / backwards)	km/h	40/25
	Wheelbase	mm	3600
	Treads (Front / Rear)	mm	2200
Specification			
Boom	Formed boom made with high-yield steel which reduces the operation weight of boom and maximize performance		
Axles	We choose the Kessler brand axle because Kessler offers the most reliable product on the market and has years of experience in manufacturing mobile crane axles.		
Cab	Full-vision operator's cab is designed for maximum comfort and ease of operation.		
Transmission	The DANA 3016FHR24659 transmission offers the latest technology for the diverse needs of off-road cranes.		
Engine	The QSB6.7 diesel engine is TIER-III compliant and is proven to have superior performance and durability.		
LMI	HIRSCHMANN LMI delivers most reliable electronic monitoring system available.		
Technical Description			
Engine	QSB6.7.....inline 6 cylinder intercooled turbo diesel kilowatts kw(Hp).....129(175.5)@2200rpm peak torque Nm(ft.lb).....799(589)@1400rpm		

Transmission	DANA powershift transmission 6 speeds forward and 3speeds reverse. Front axle disconnect offering both 4x4 and 4x2 operation. Max speed40km/hr(24.8)mph		
Axles	Kessler front and rear steering axles with planetary reduction. Front-Rigid mount Rear-full-Floating rear axle.Automatic rear axle oscillating lock occurs when superstructure is swung 10°from centerline in either direction.		
Steering	Power steering with four independent modes: Front -Wheel Rear-Wheel All-Wheel Crab		
Brakes	380millimeters (14.9 in) diameter disc brakes on all wheels hydraulically operated	Tires and Wheels	16.00x25-28/20.5x25-28,earthmoving-style tiers.Steel disc wheels.
Outriggers	Four independent horizontal beams and vertical jacks with integral holding valves , each independently controlled from operator cab . 100%—fully extended outrigger footprint——461.7 sq.ft. (42.9 sq.m) 50%—fully extended outrigger footprint——316.1 sq.ft. (29.37 sq.m) 0%—fully extended outrigger footprint——170.5sq.ft. (15.84 sq.m) light weight aluminum,quick release outrigger pontoons. Floating ground bearing area ——(0.15 sq.m) Outrigger Span ——Length 21.7ft.(6.6m) Width 21.3ft.(6.5m)		
Hydraulic System	PERMCO hydraulic pumps. Gear pump for main and auxiliary winches, boom hoist and telescope cylinders. Gear pump for steering. Gear pump for outriggers and slewing. 158.4 gallon (600L) hydraulic reservoir withexternal sight and temperature gauge . Easily accessible (10 micron) cartridge style full flow filters with bypass protection. Max.operating pressure ——25Mpa (3625 psi ,250bar)		
Counterweight	Single 8598lb (3900 kg) fixed counterweight. Length——8.5ft(2.6m) Width——2.061ft(0.63m) Height——2.131ft(0.65m)	Swing	Bi-directional hydraulic swing drive with multi-disc wet brake and planet ary reduction gearbox.Spring-applied hydraulically released swing brake and 360° pneumatic positive swing lock. Max.swing speed:.....2.2rpm
LMI	HIRSCHMANN LMI control system.Microguard graphic display load moment t and anti-two block system with audio-visual warning and function limiter. System displays the following information:crane configuration,boom length,boom angle, load radius,allowed capacity,actual load,and load percentage of allowed capacity. System includes settable work parameters :min./max. boom length,min./max.boom angle, defined swing area.		
Main Boom	The box-shaped main boom consists of 4 U-type boom sections made of high-strength steel. The main boom head is equipped with 4 sheaves, which is convenient for changing line parts without removing the wedges. The rooster sheave is optional. Fully extended boom length.....98ft (30m) Fully eretracted boom length.....31.5ft (9.6m) Max.tip height , main boom101.7ft.(31m) Max.tip height,jib erected/pullout retracted 131ft.(40m) Max.tip height,jib erected/pullout extended 147ft.(44.8m) Boom andle range(min./max.).....-1°/+80°		
Boom with Jib	28.4-44.5ft.(8.65-13.55m)jib consisting of 28.4ft (8.65m) lattice side stow jib and 16ft (.4.9m)manual pull out section.Main jib is offsettable at 5°,17°and 30°. Max tip height with 28.4ft.(8.65m)jib erected is 131ft(40m). Max tip height with 28.4ft.(8.65m)jib+16ft.(4.9m) fixed pullout extension is 147ft(44.8m).		
Winches	standard two speed main and auxiliary hoists,each with planetary reduction and spring applied multi-disc wet brake. Each hoist features: Grooved drum lagging. Hoist drum cable followers. Max.permissible line pull.....11,310lbs.(5130kg) Winch speed.....0-492rpm.(150m/min) Power up/power down. Electronic drum rotation indicators. Rope construction.....17mm(0.67in.)rotation-resistant compacted strand.		
Hooks	25-ton(27U.S.ton).4 sheave(steel),standard reeve hook block with odd part pin-off and safety latch. Hook block weight.....628 lbs.(285kg). 3-ton(3.3U.S.ton)top swivel hook ball with safety latch. Hook ball weightl.....231 lbs.(105kg).		

www.zoomlion.com