

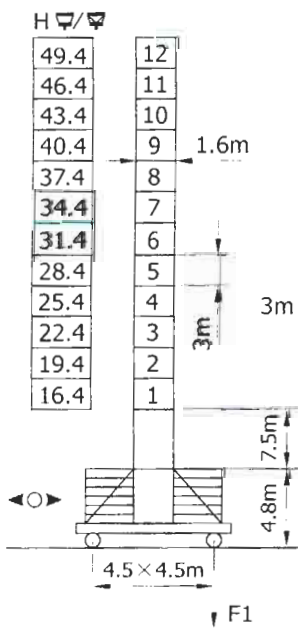
塔身截面C Mast  $\square 1.6m \times 1.6m$

塔身截面B Mast  $\square 2m \times 2m$

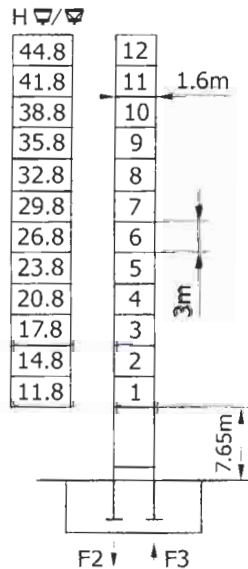
行走式 Travelling

行走式 Travelling

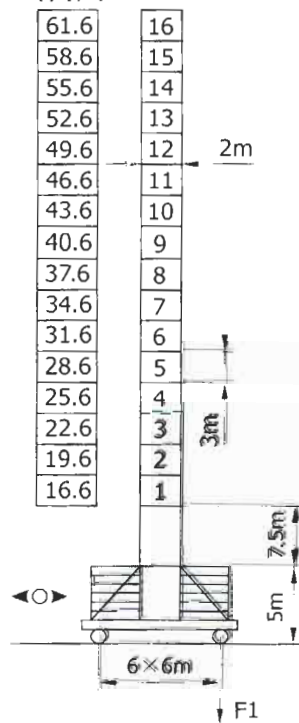
固定式 Stationary



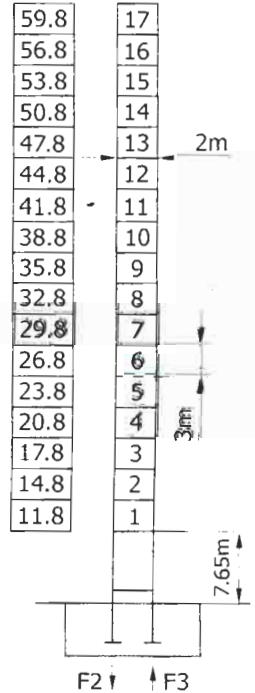
固定式 Stationary



H  $\square$  /  $\square$



H  $\square$  /  $\square$



F1	● 70t	■ 89t
50t		

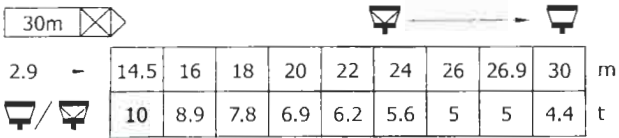
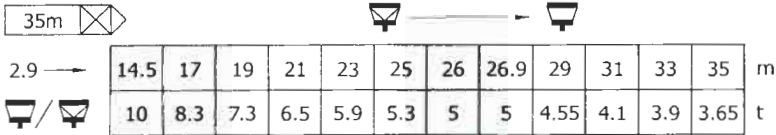
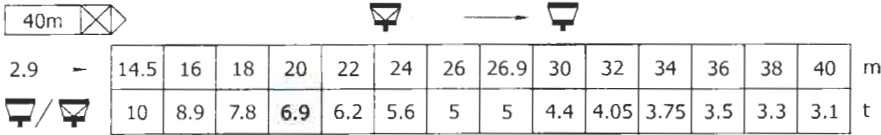
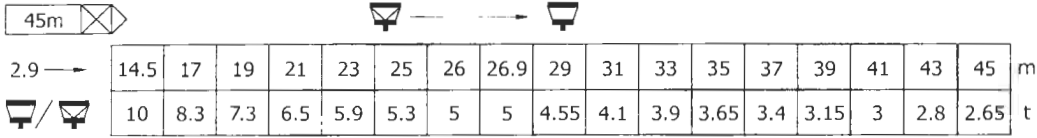
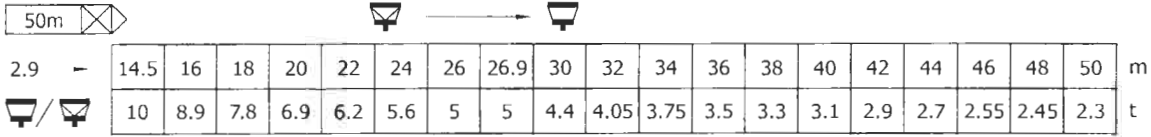
F2	● 98t	■ 118t
F3	● 66t	■ 92t
42t		




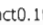
F1	● 86t	■ 120t
69t		

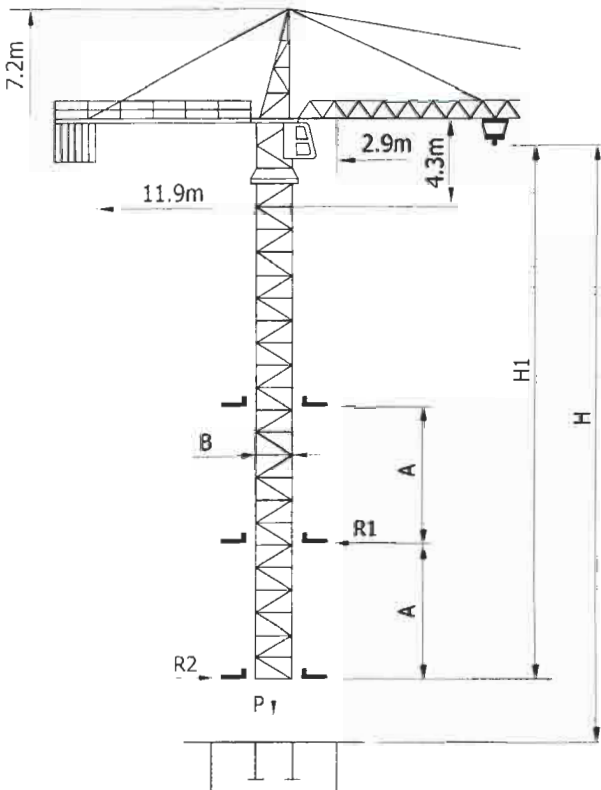
F2	● 108t	■ 192t
F3	● 68t	■ 157t
57.8t		

● 工作状态 In service    ■ 非工作状态 Out of service    F 固定反力或轮压 Reactions    自重 Without load and ballast with longest jib and maximum height

## 负荷特性 Load Diagrams





 /  标准小车可使用2/4倍率绳。(使用四倍率绳时, 应从二倍率的载荷中减去0.1吨)。 Standard trolley 2/4 fall (when using  subtract 0.1t from the loads )



内爬机型		BA476	BA479	BA675
塔身截面	B	1.6m	1.6m	2m
组合高度	H1	35.6m	43.3m	53.6m
顶升框间距	Amin	7m	12m	16m
	Amax	11m	19m	21m
支座反力	P	63.5t	69.6t	75t
	R1	18.7t	18.6t	27.9t 21.2t
	R2	16.7t	15.9t	14.7t 10.4t
自重		41t	50t	59t

## 机构特性 Specifications Mechanisms

起升 Hoisting	机构代号 Model	单位 Unit					功率 Power	绕绳量 Rope Length
	▲ ▼	70RCS25	m/min t	0-50 5	0-100 2.5	0-25 10	0-50 5	51.5kW
▲ ▼	QTJ10.100D	m/min t	0-50 5	0-100 2.5	0-25 10	0-50 5	55kW	400m >400m*
变幅 Trolleying	◀■▶ 95JX1	0 — 58 m/min				堵转力矩95Nm		
回转 Slewing	● RCV95	0 0.7 r/min				堵转力矩2×95N.m		
行走 Travelling	◀○▶ RT443	12.5/25 m/min				4×1.7/3.4kW		

\* 根据用户特殊要求提供 To be supplied as per client's specific requirements